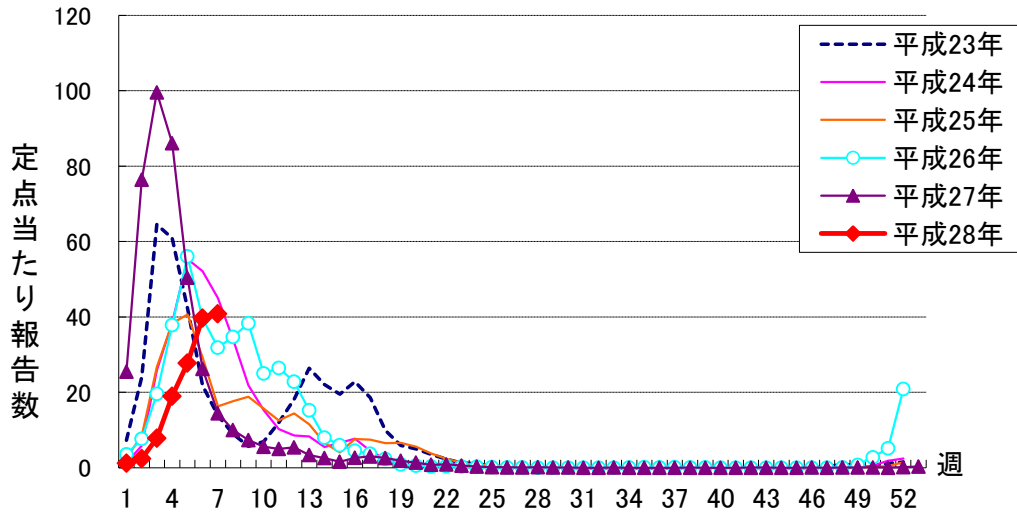
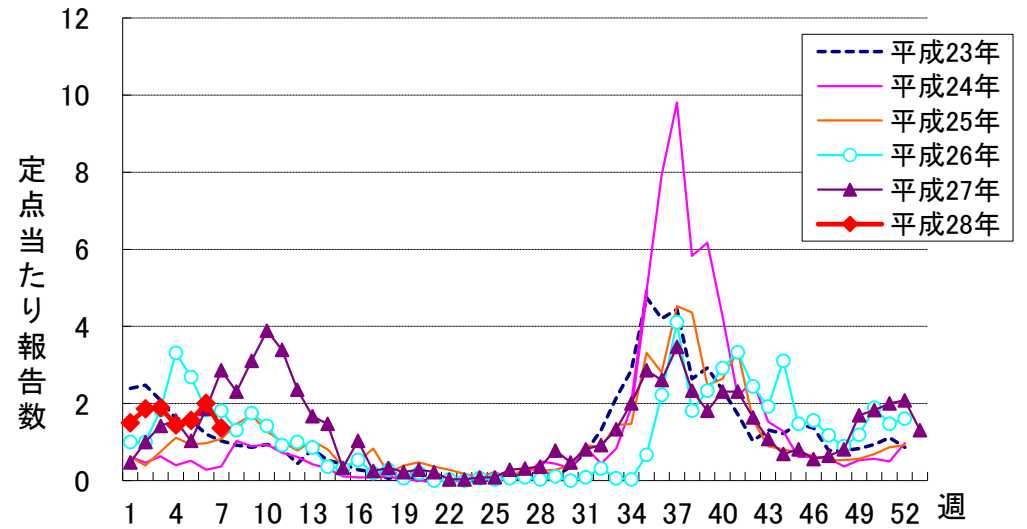


週報 グラフ一覧(平成23年第1週～平成28年第7週)

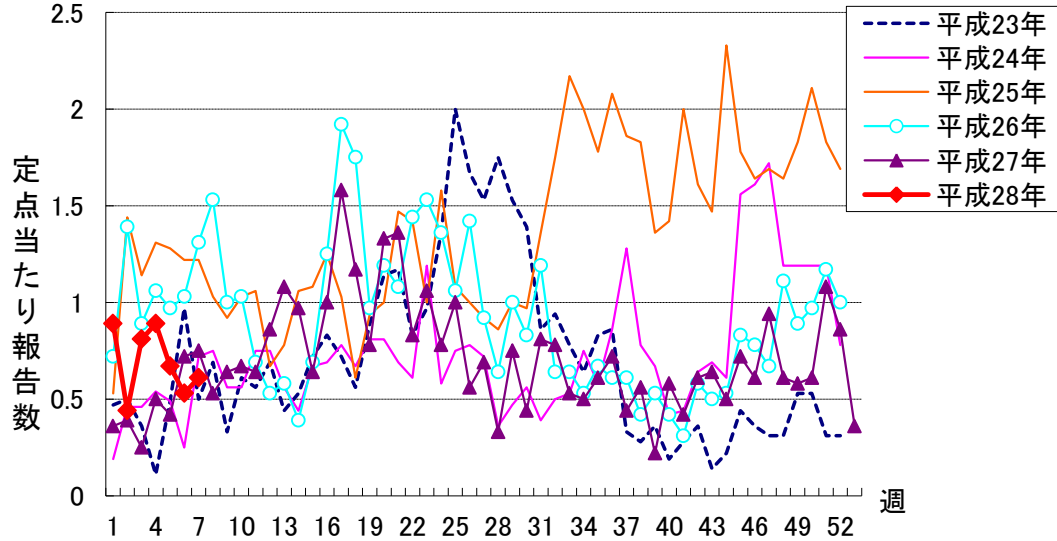
インフルエンザ



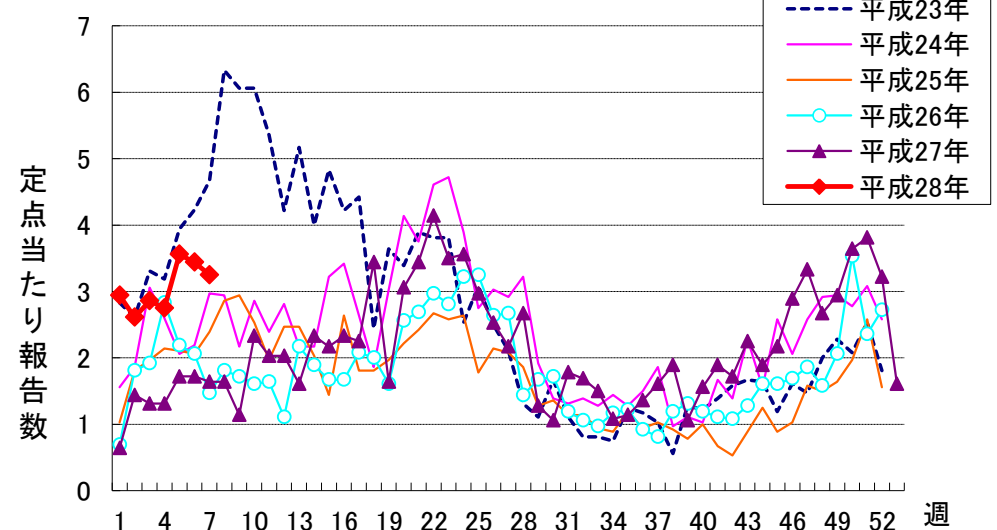
RSウイルス感染症



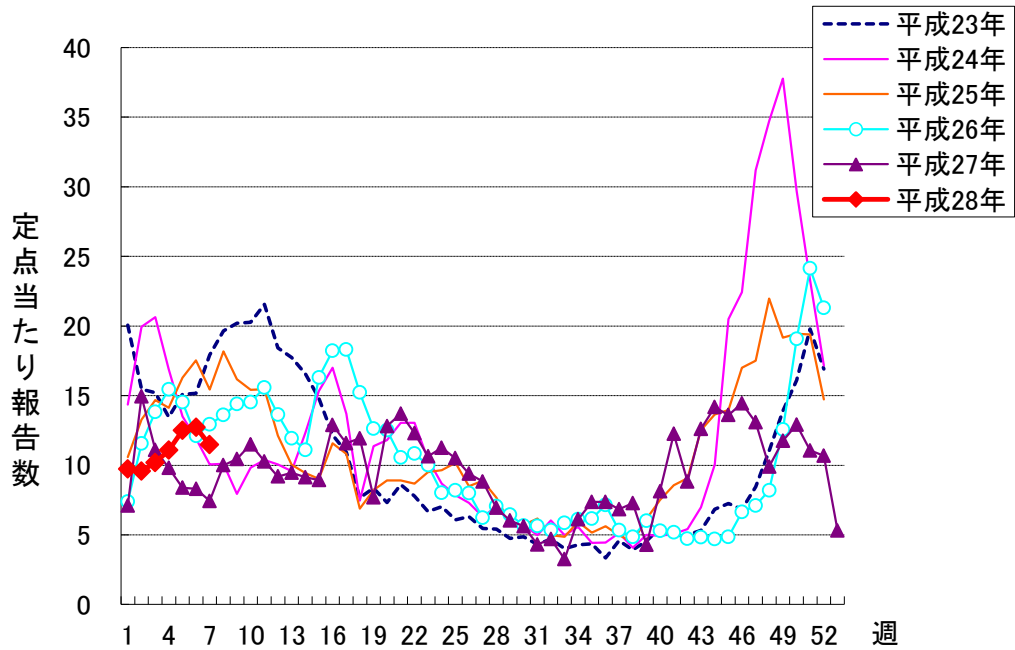
咽頭結膜熱



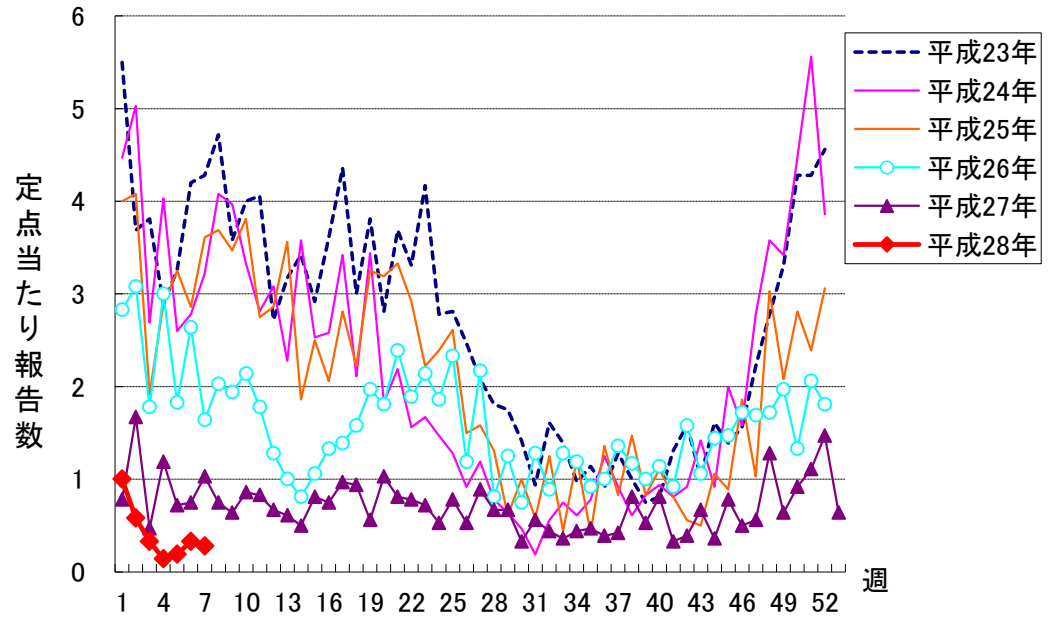
A群溶血性レンサ球菌咽頭炎



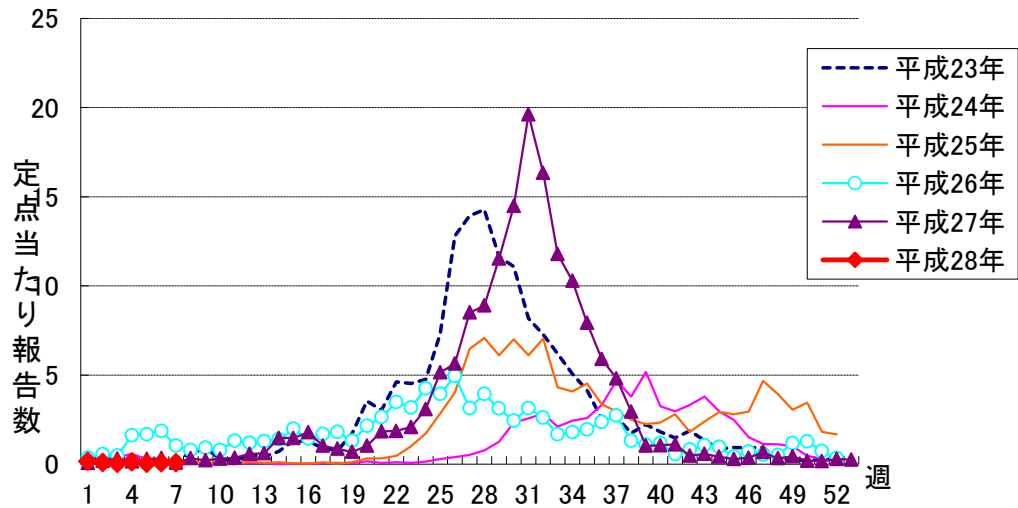
感染性胃腸炎



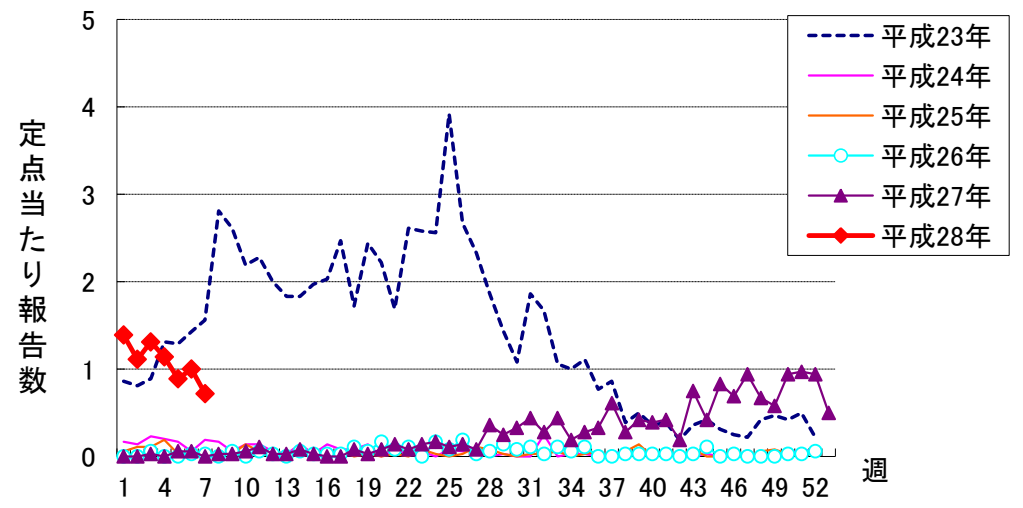
水痘



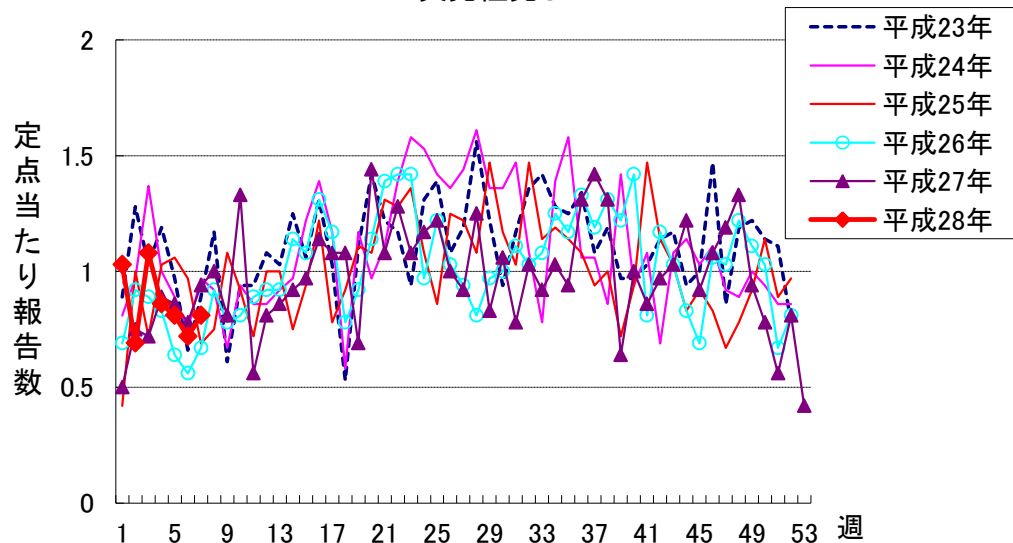
手足口病



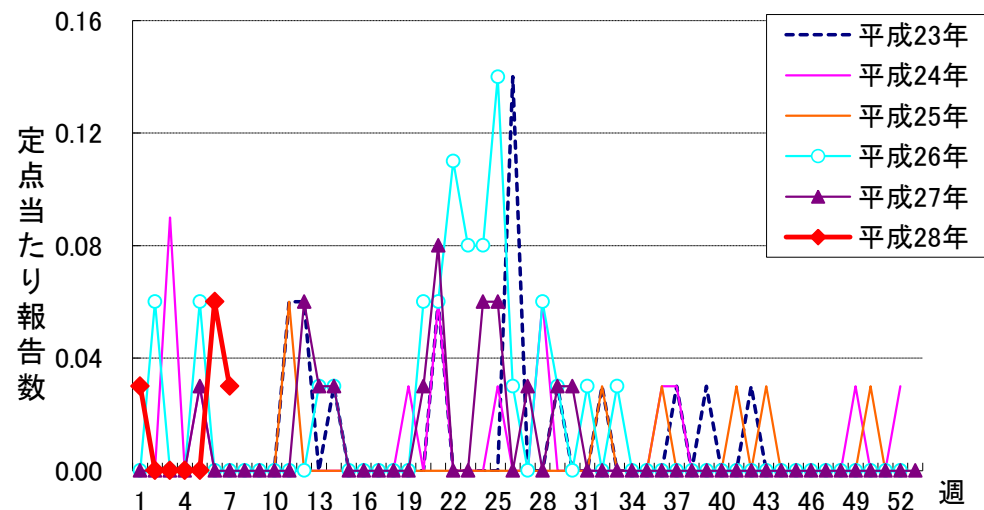
伝染性紅斑



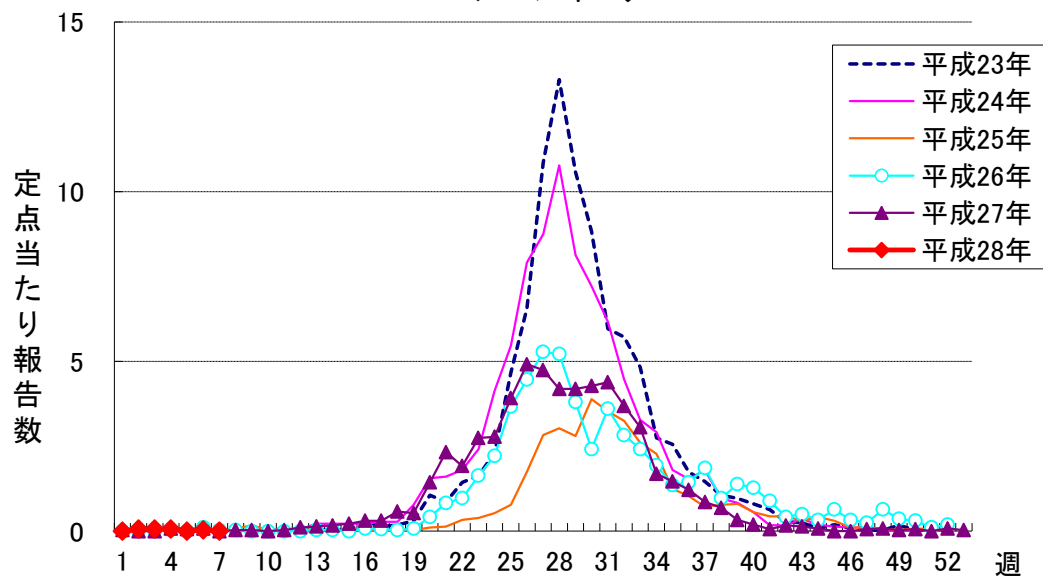
突発性発しん



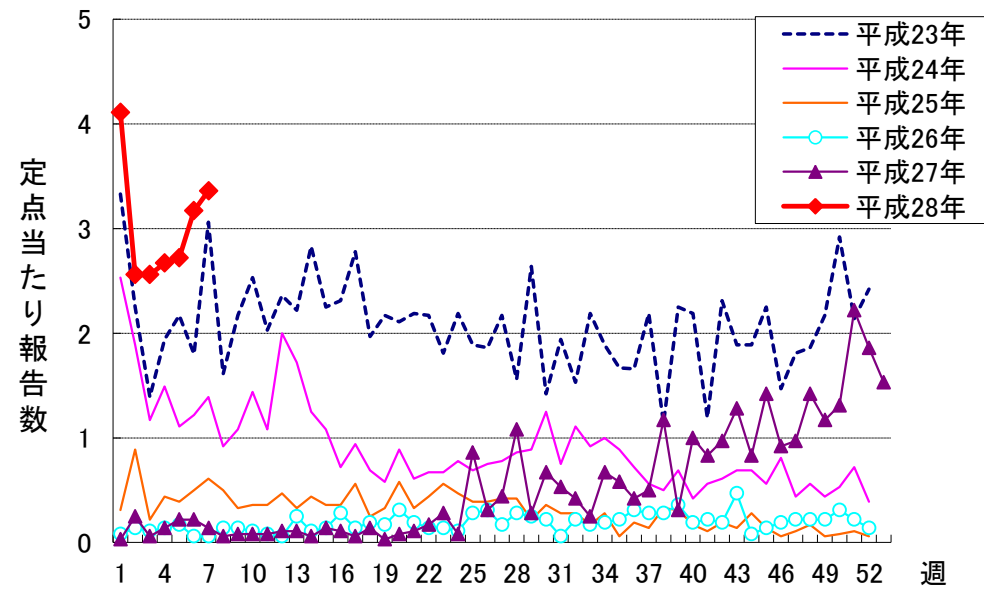
百日咳



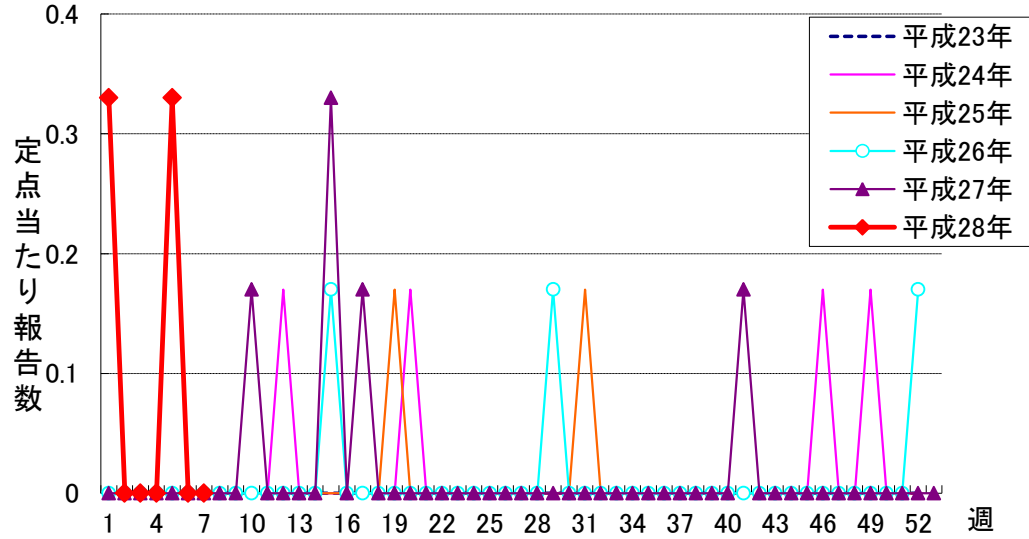
ヘルパンギーナ



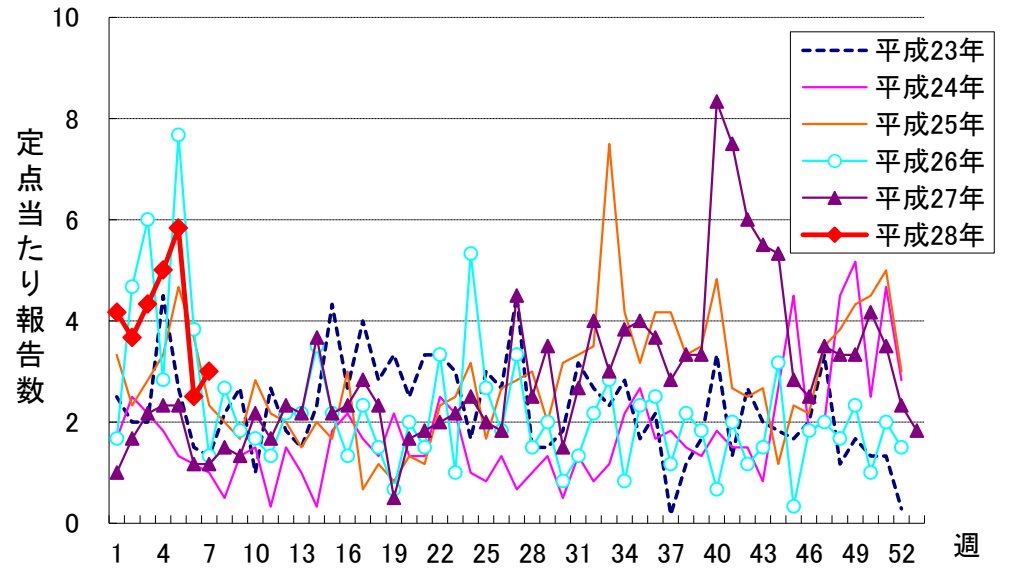
流行性耳下腺炎



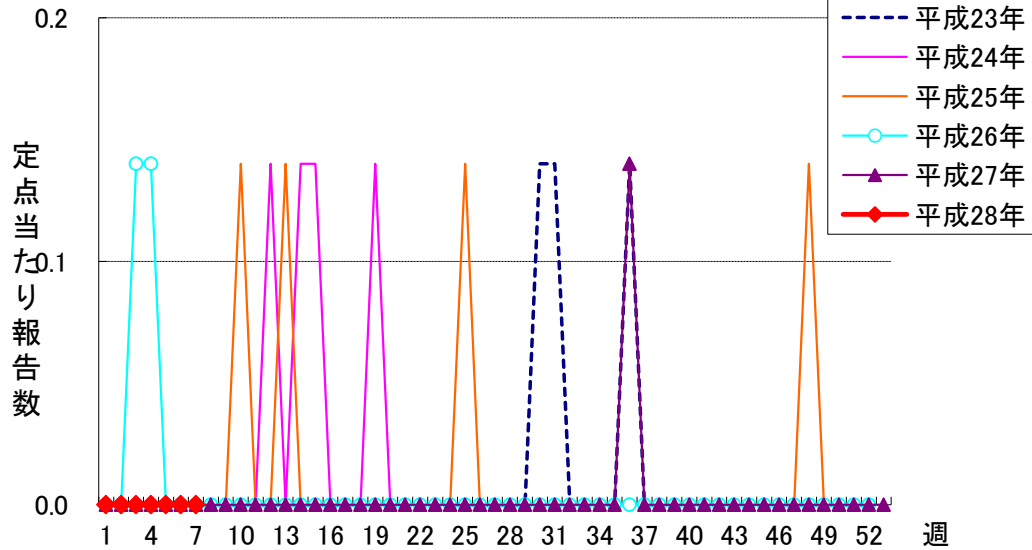
急性出血性結膜炎



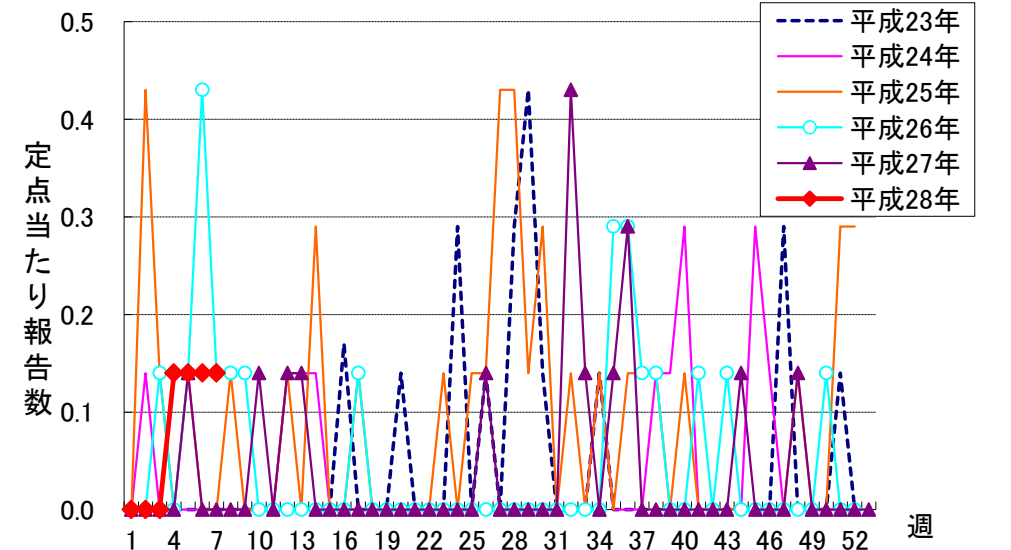
流行性角結膜炎



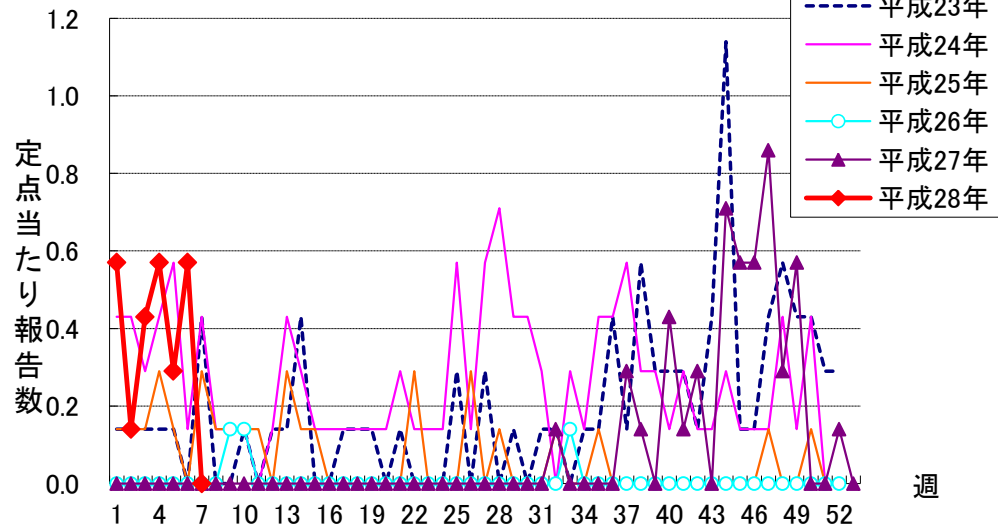
細菌性髄膜炎



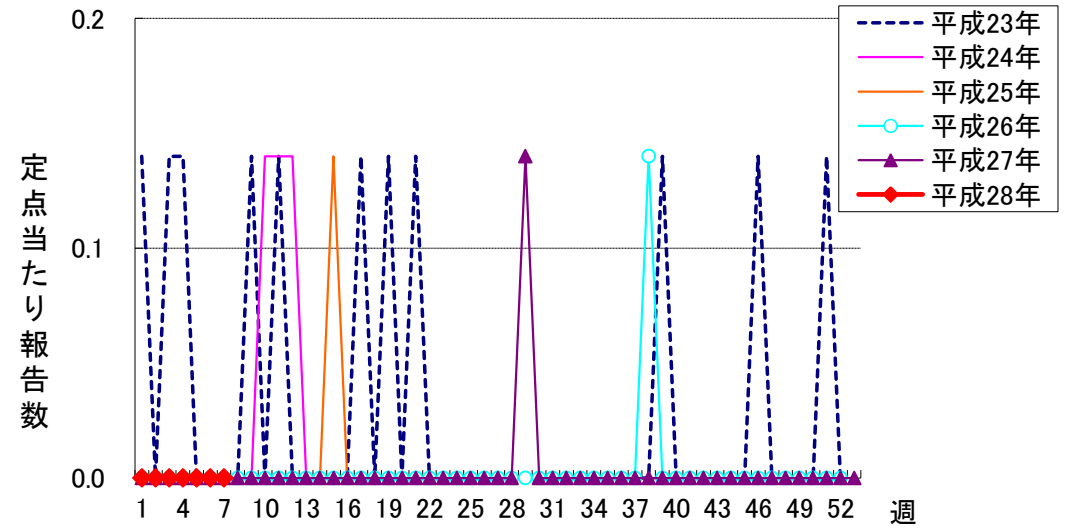
無菌性髄膜炎



マイコプラズマ肺炎



クラミジア肺炎



感染性胃腸炎(ロタウイルス)

