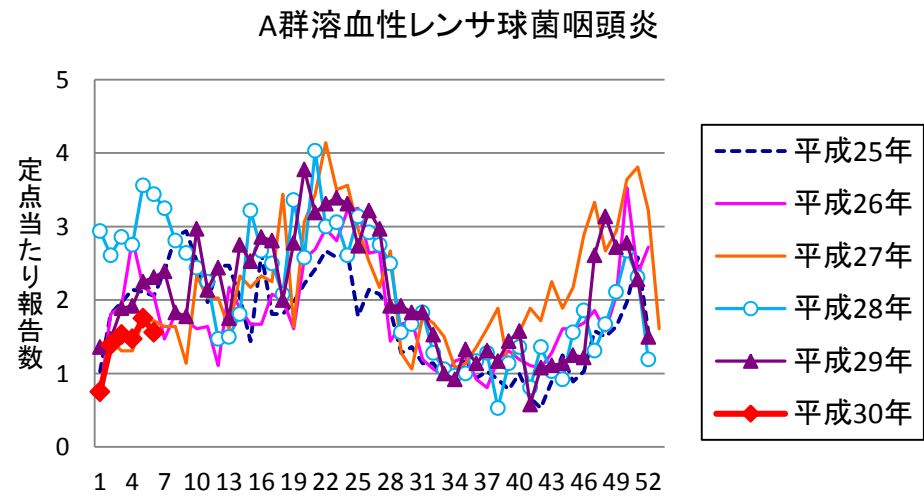
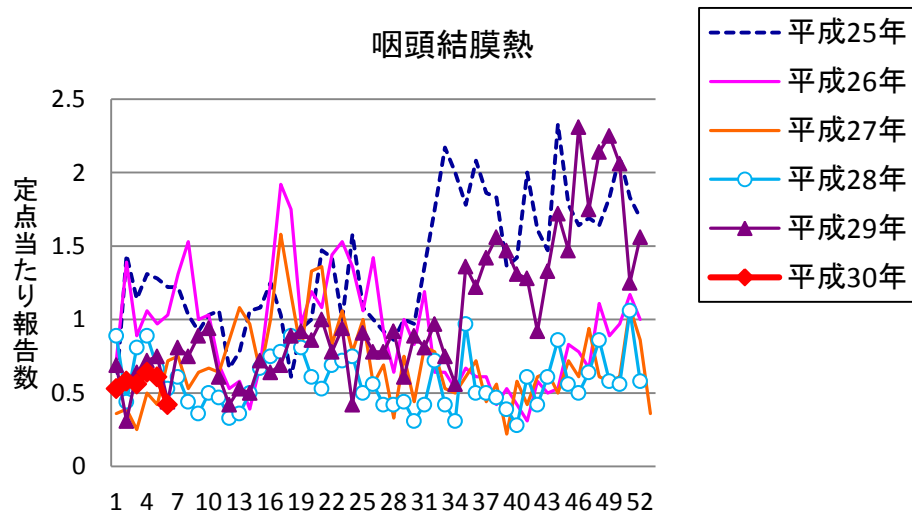
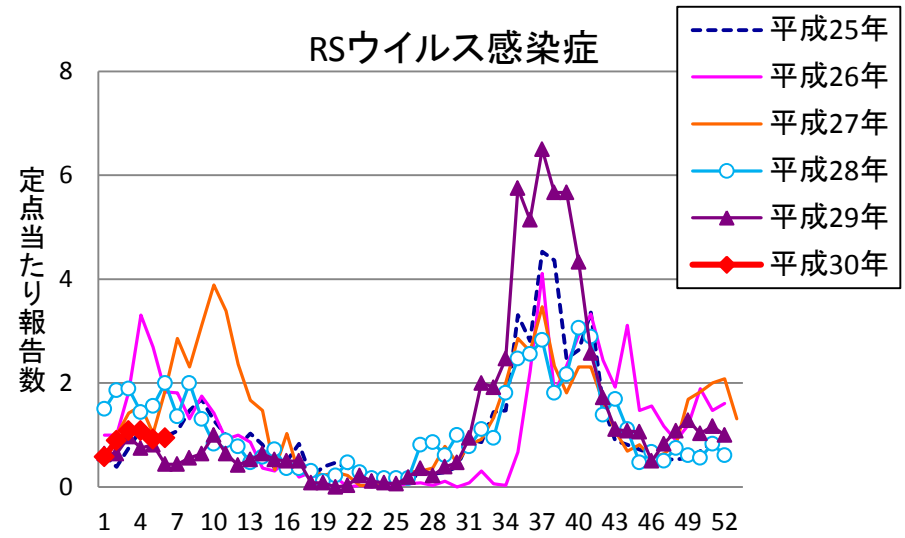
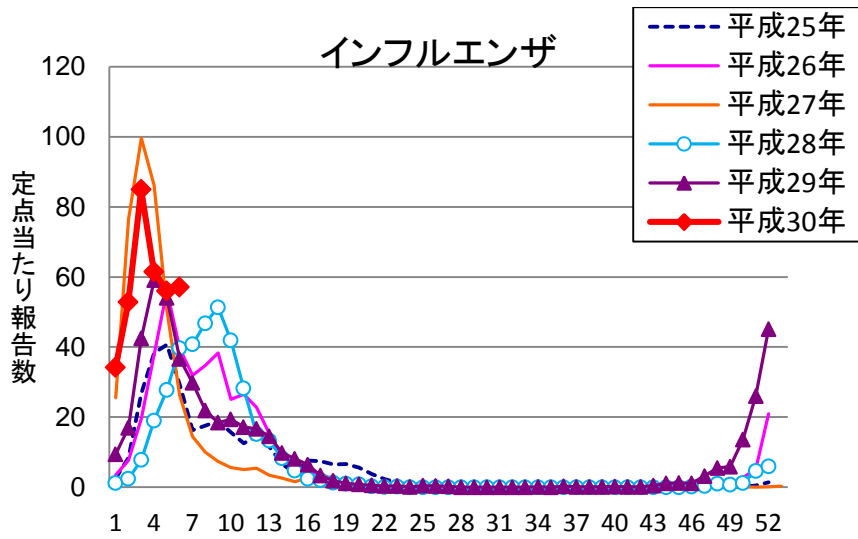
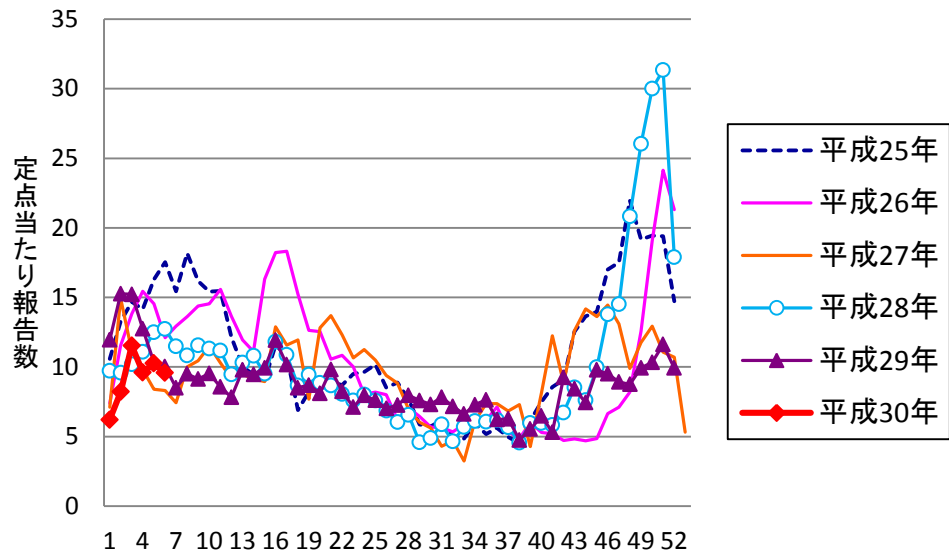


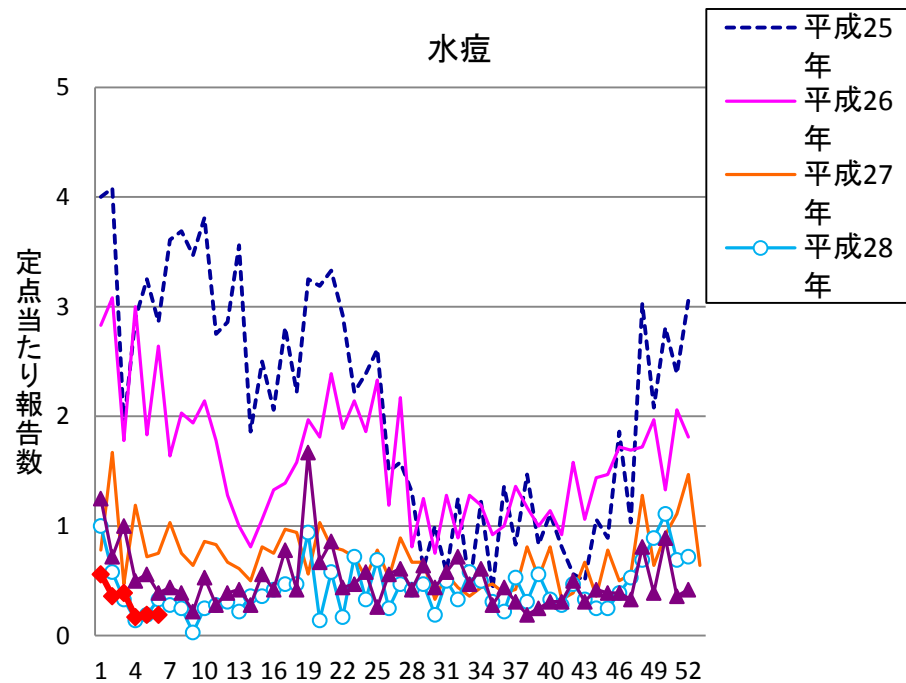
週報 グラフ一覧(平成25年第1週～平成30年第6週)



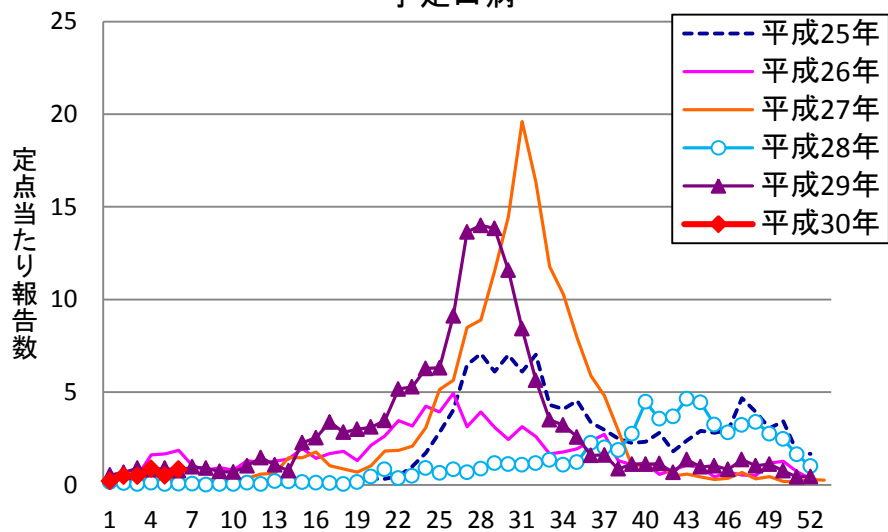
感染性胃腸炎



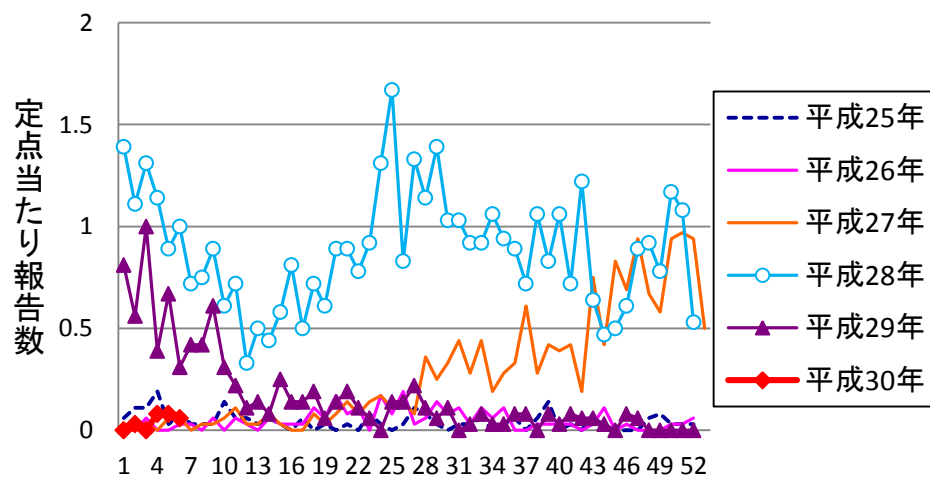
水痘



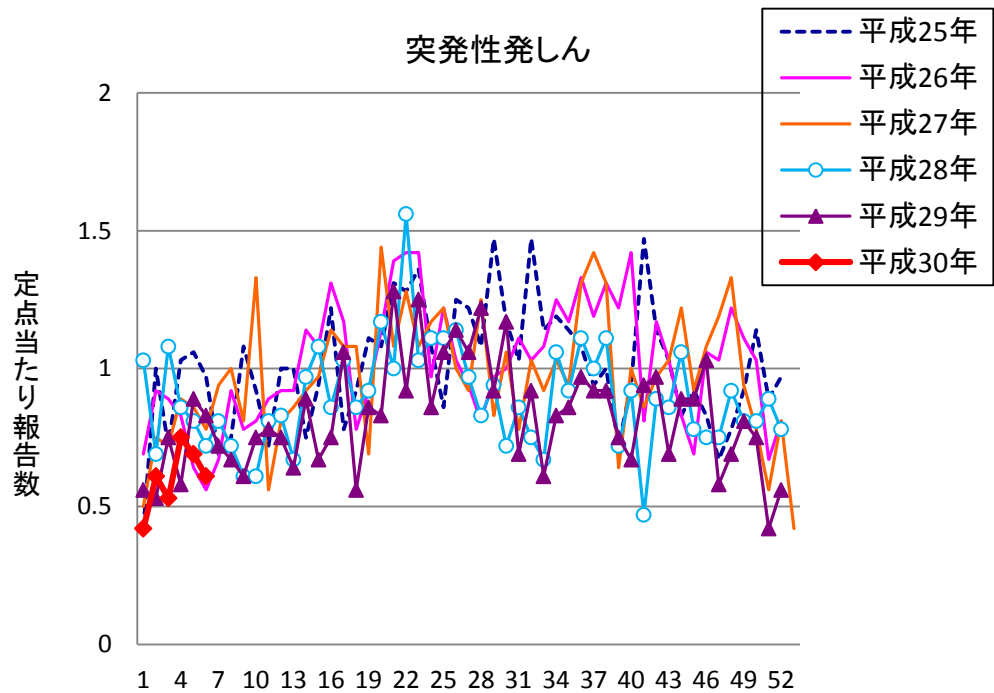
手足口病



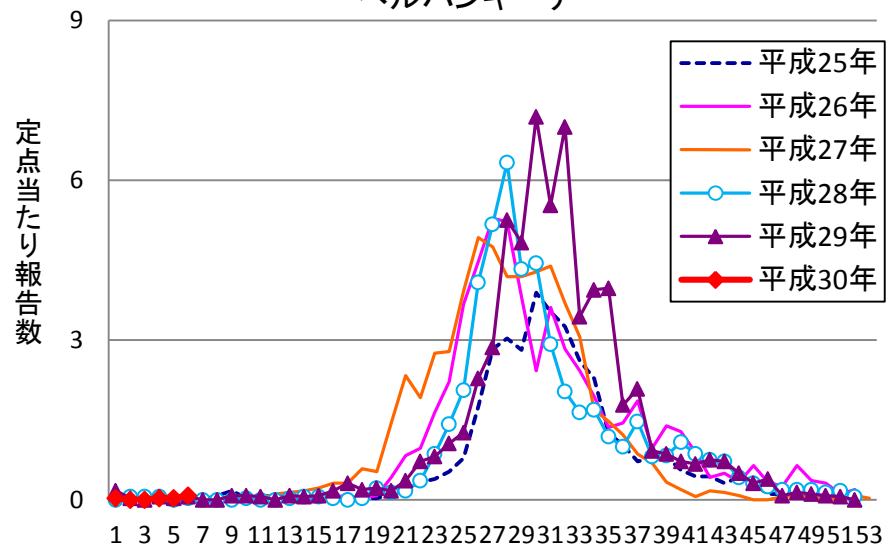
伝染性紅斑



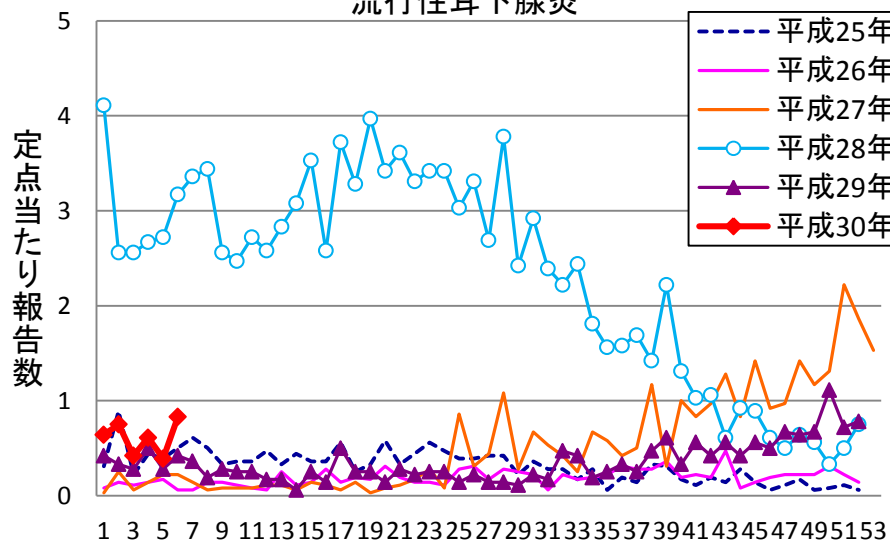
突発性発しん



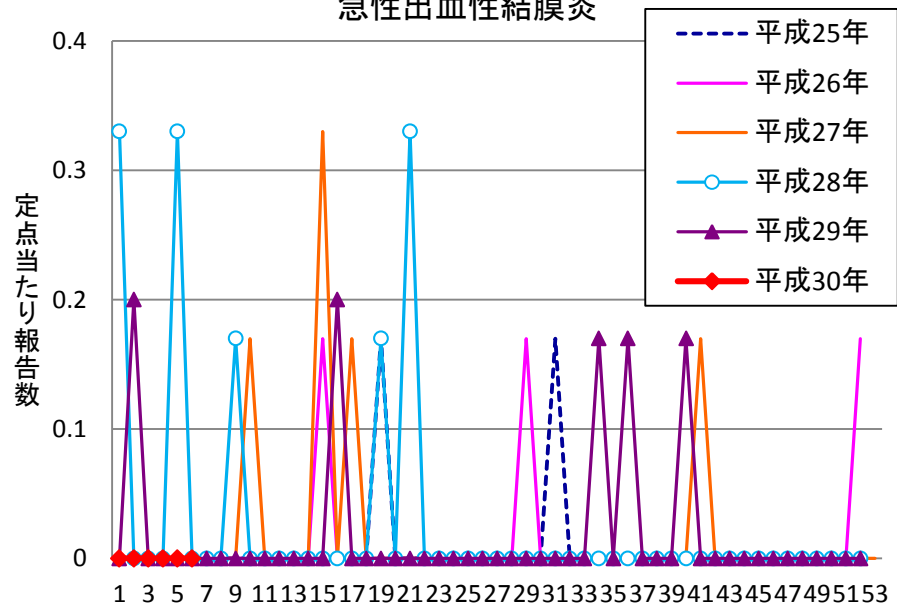
ヘルパンギーナ



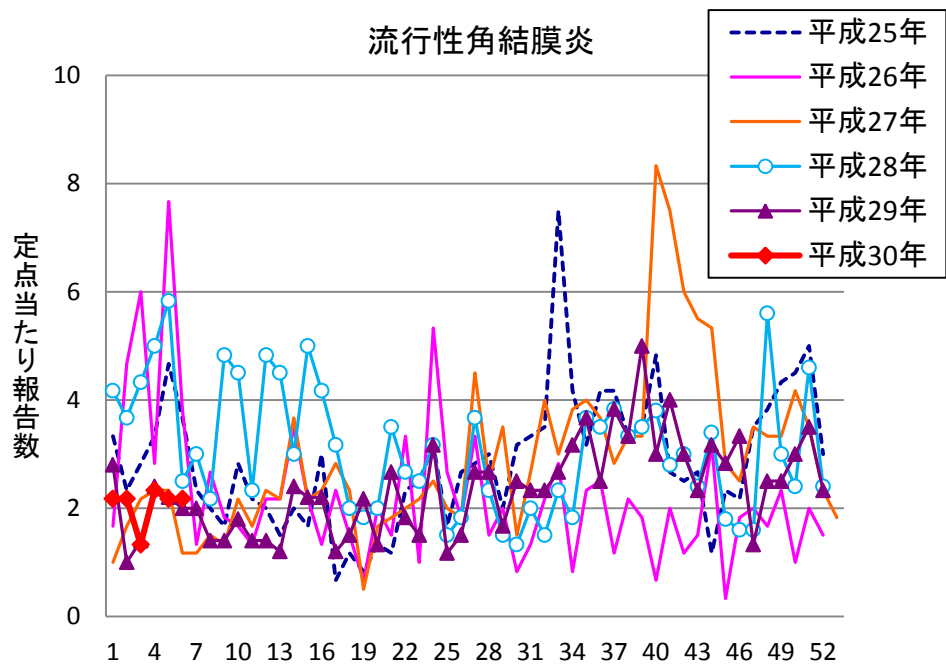
流行性耳下腺炎



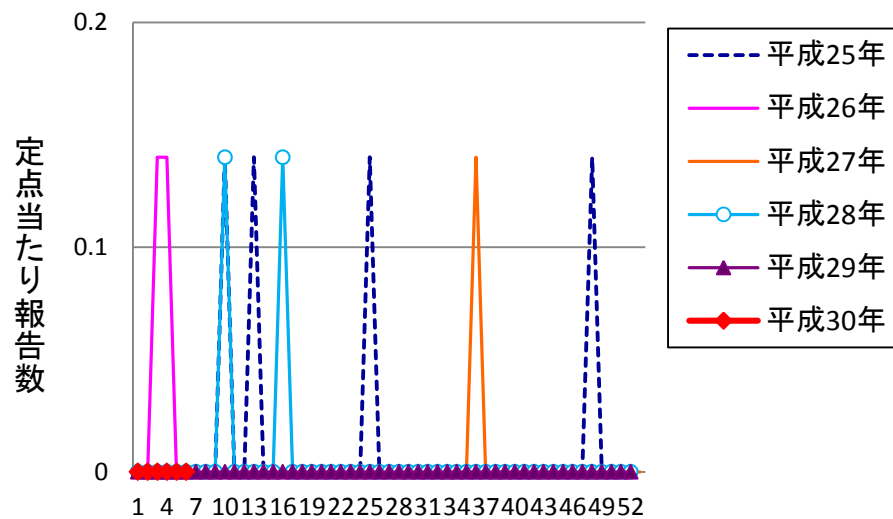
急性出血性結膜炎



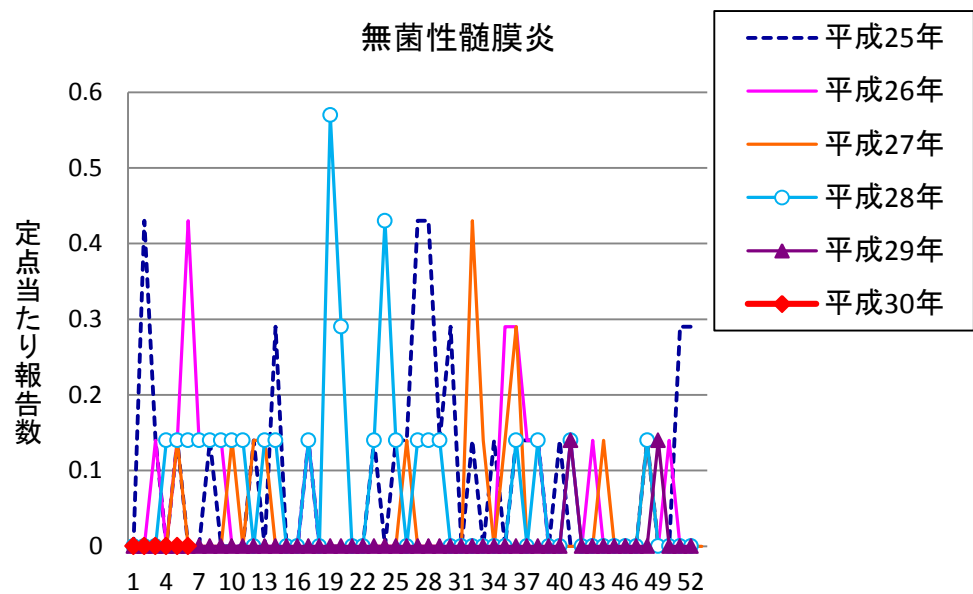
流行性角結膜炎



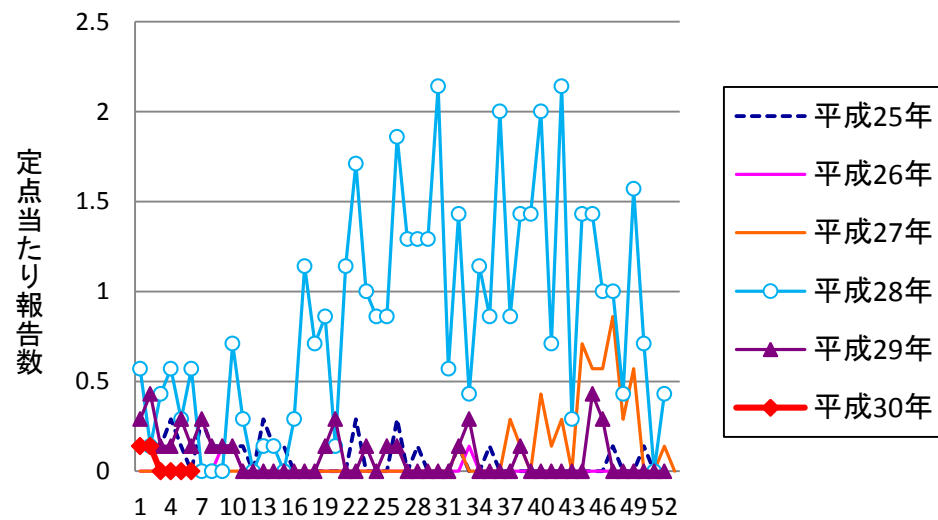
細菌性髄膜炎



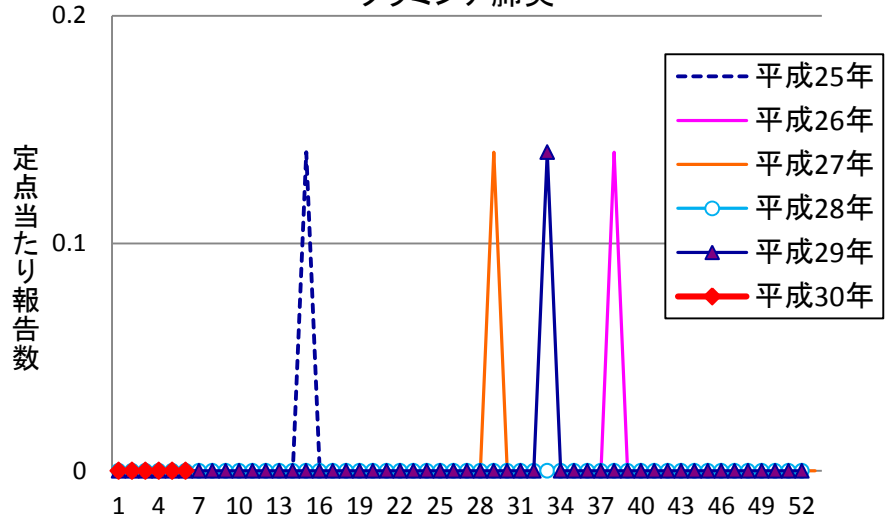
無菌性髄膜炎



マイコプラズマ肺炎



クラミジア肺炎



感染性胃腸炎(ロタ)

