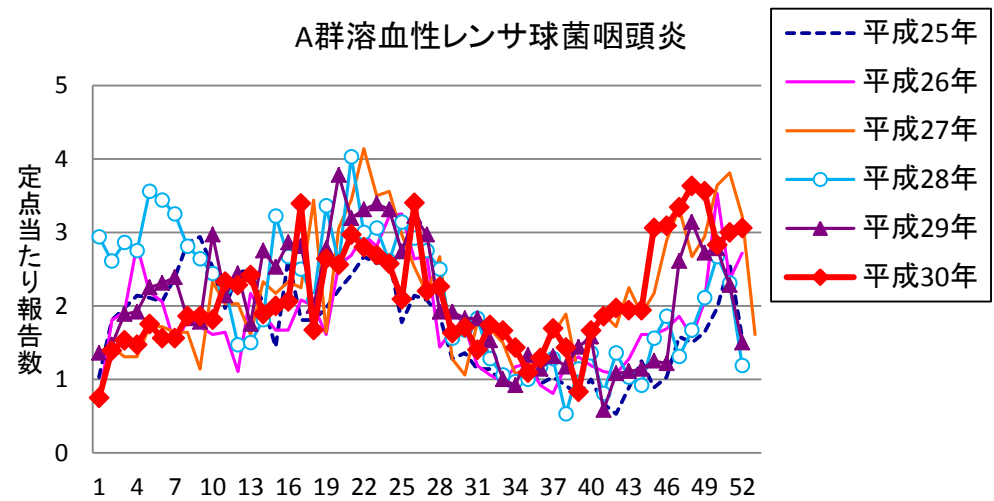
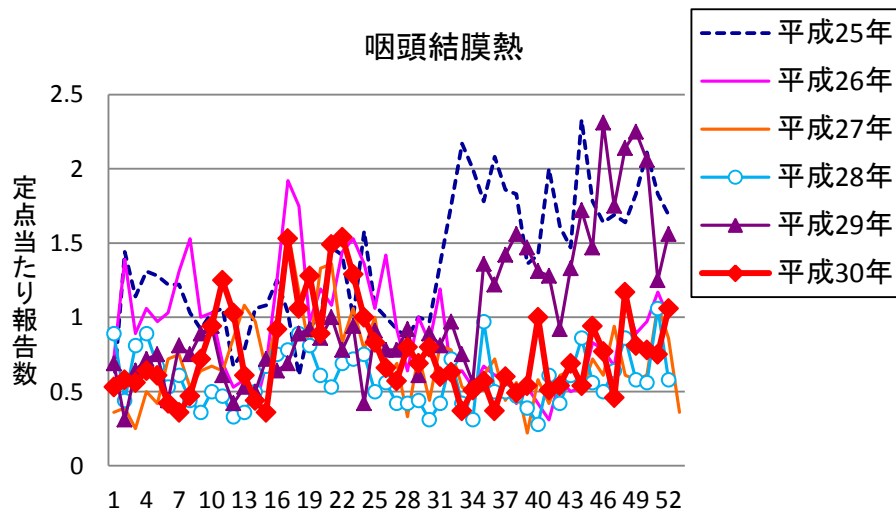
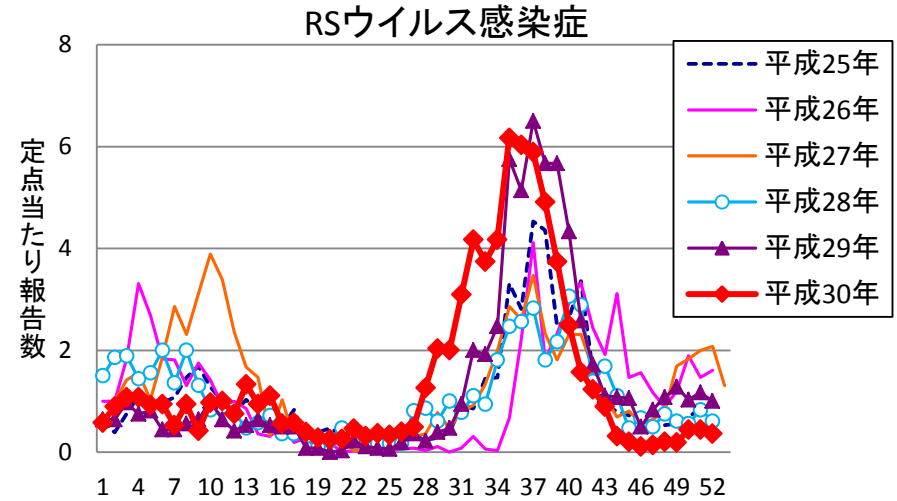
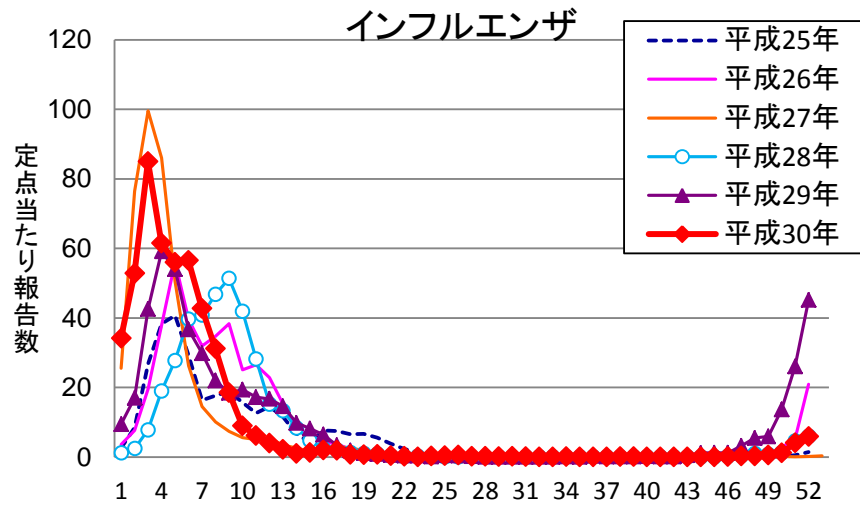
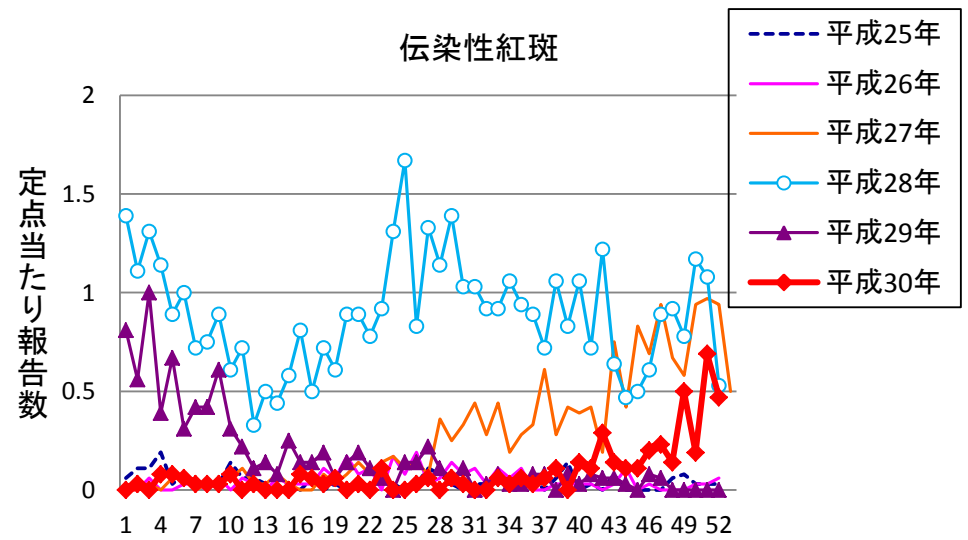
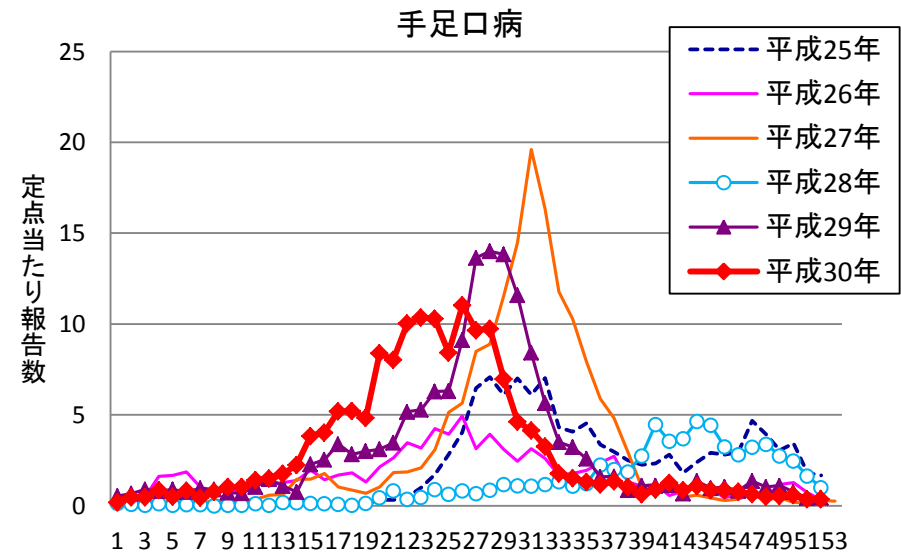
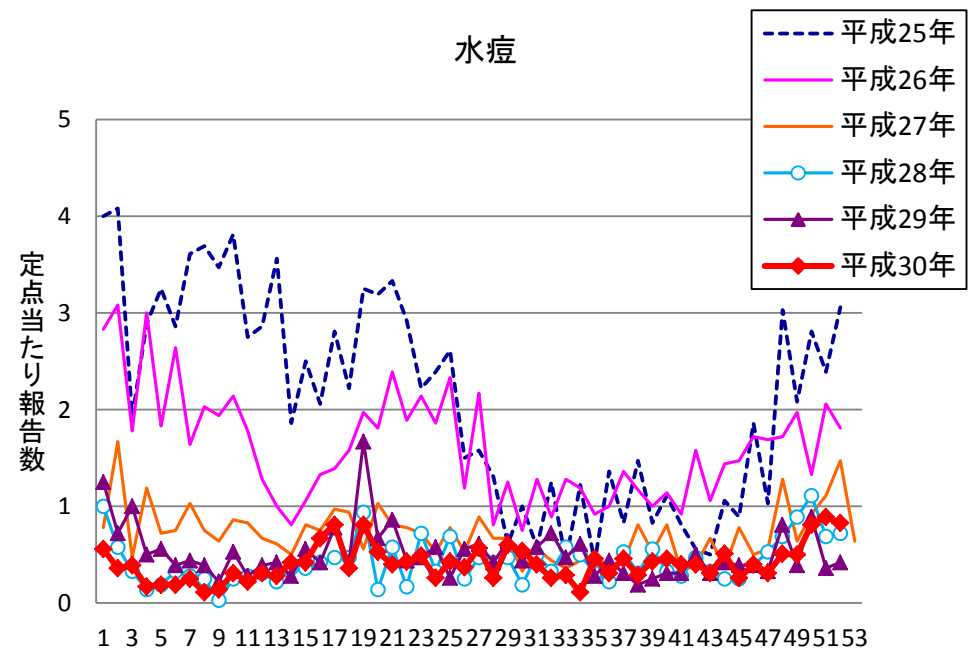
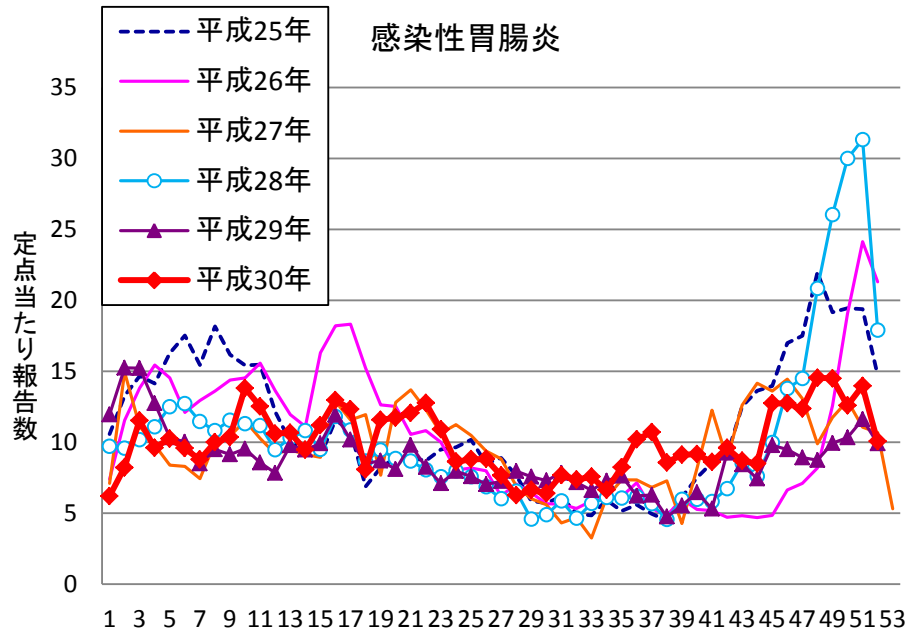
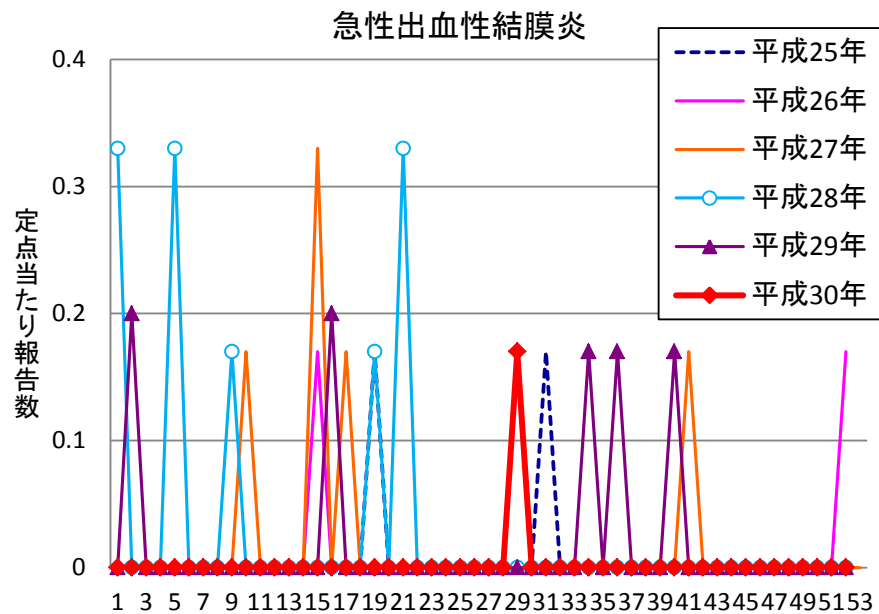
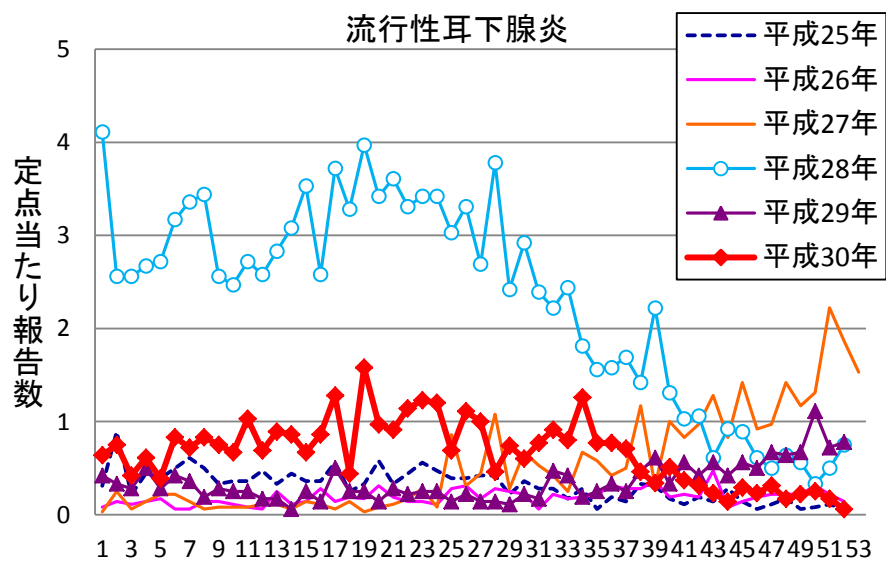
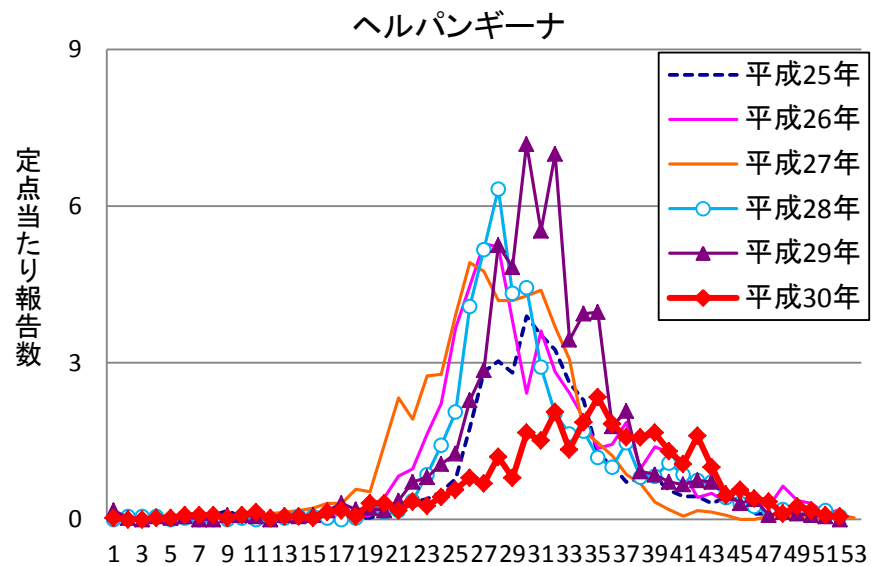
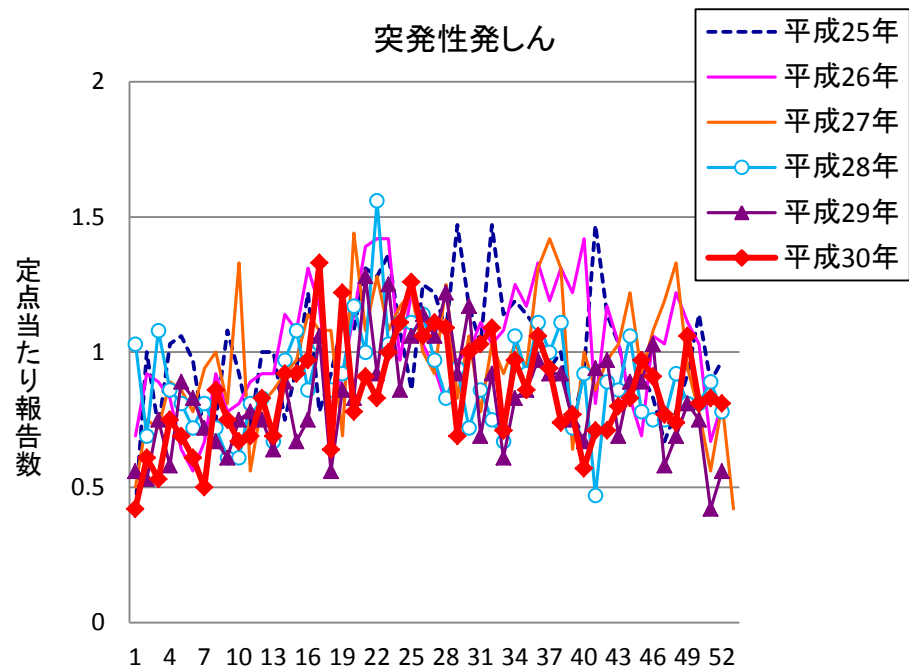


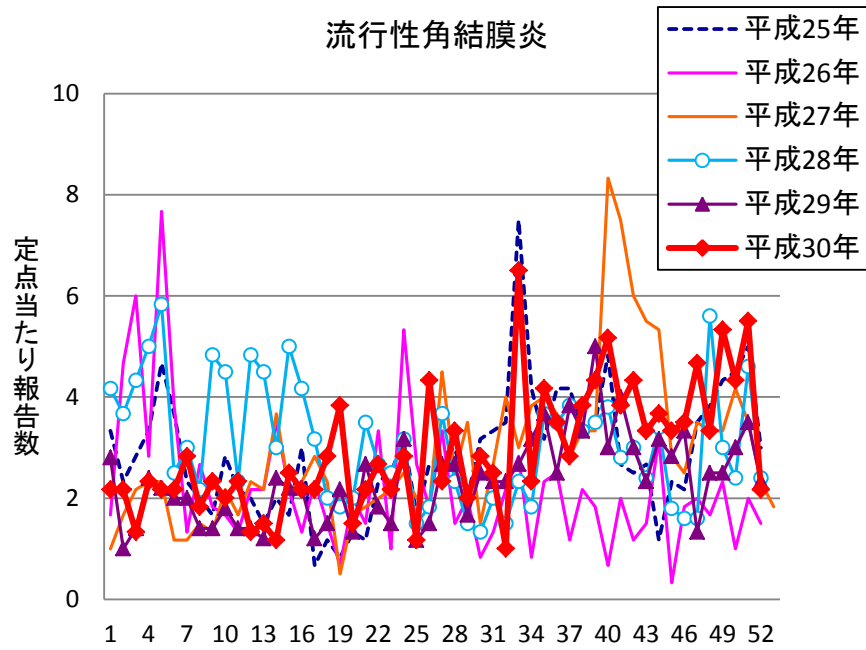
# 週報 グラフ一覧(平成25年第1週～平成30年52週)



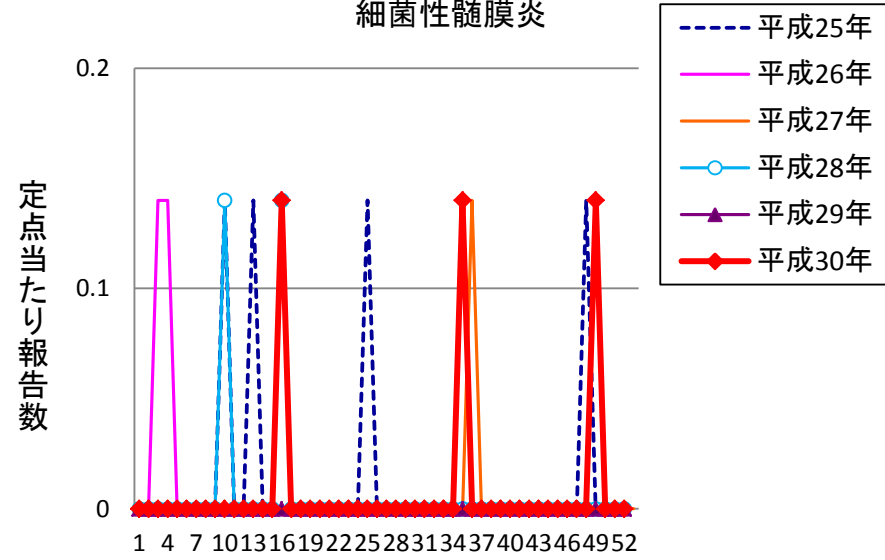




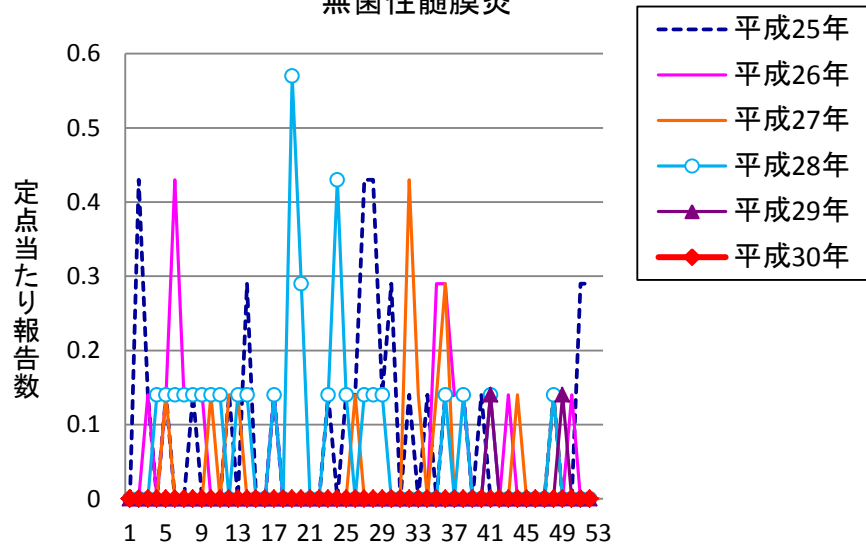
流行性角結膜炎



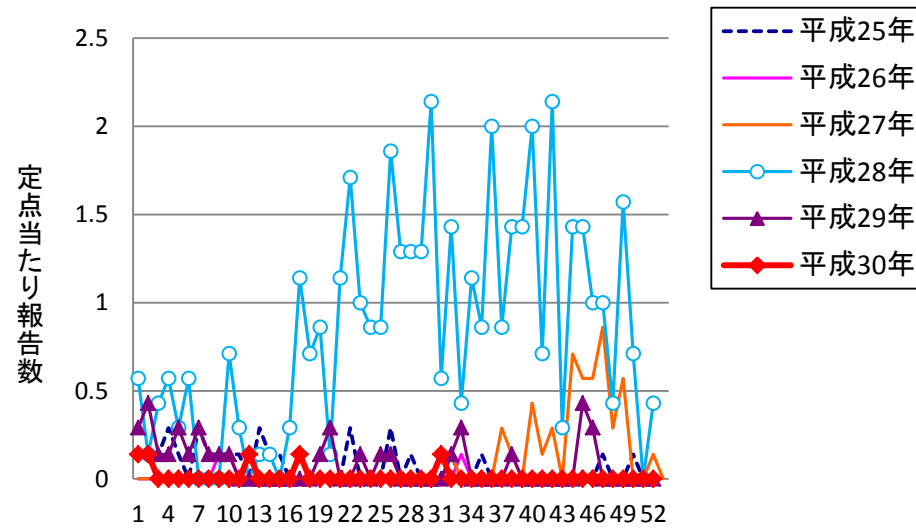
細菌性髄膜炎



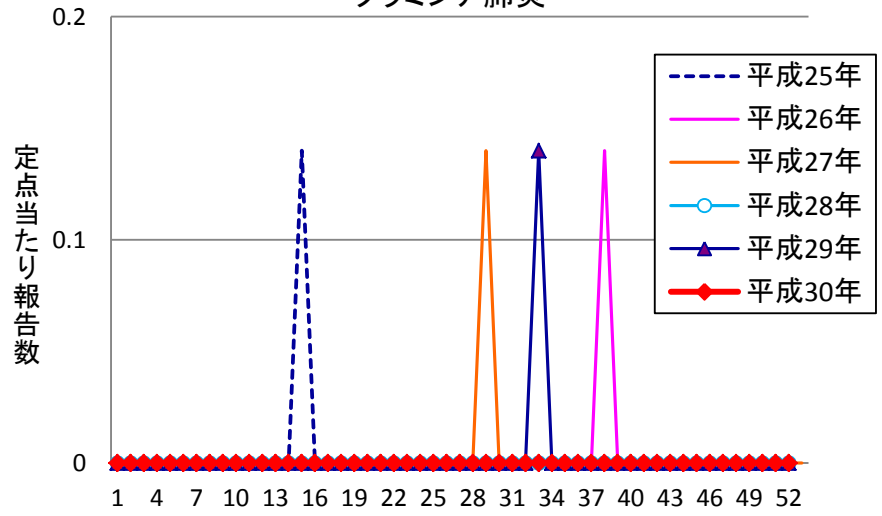
無菌性髄膜炎



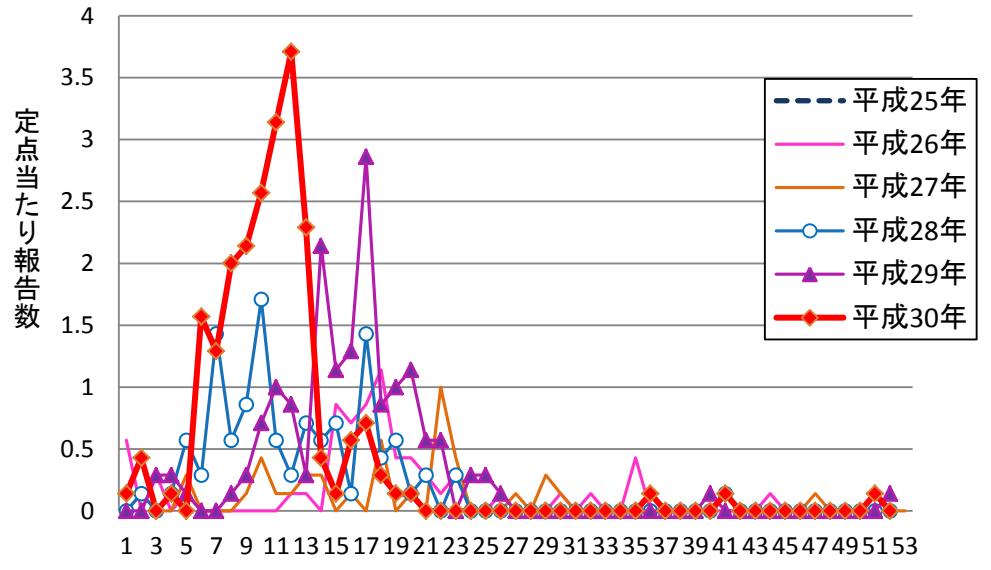
マイコプラズマ肺炎



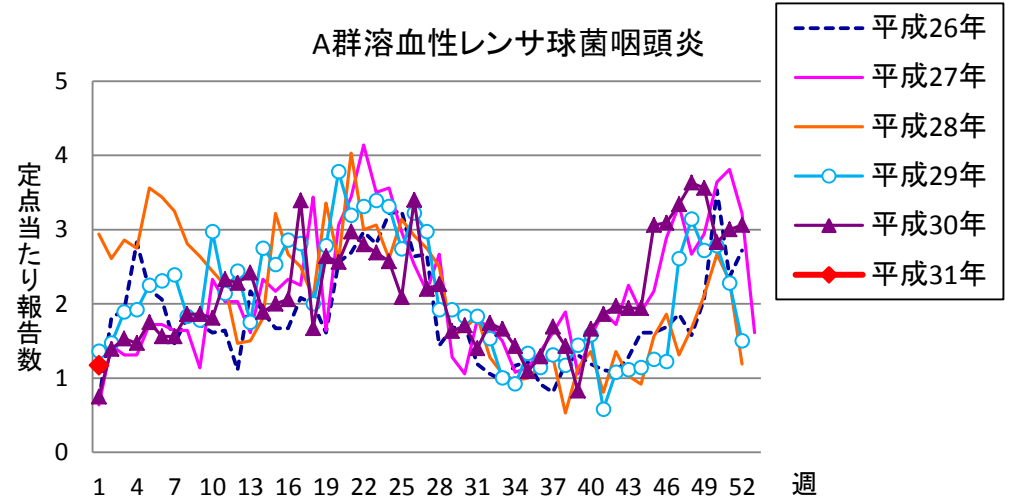
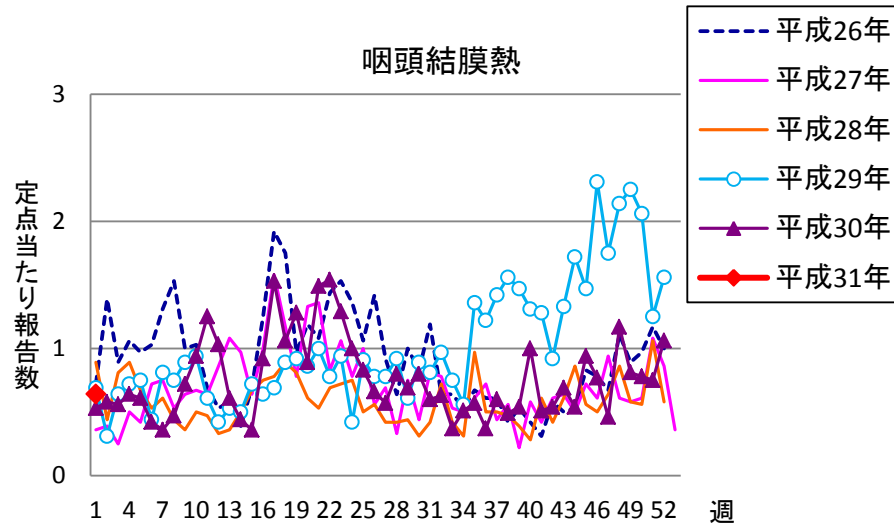
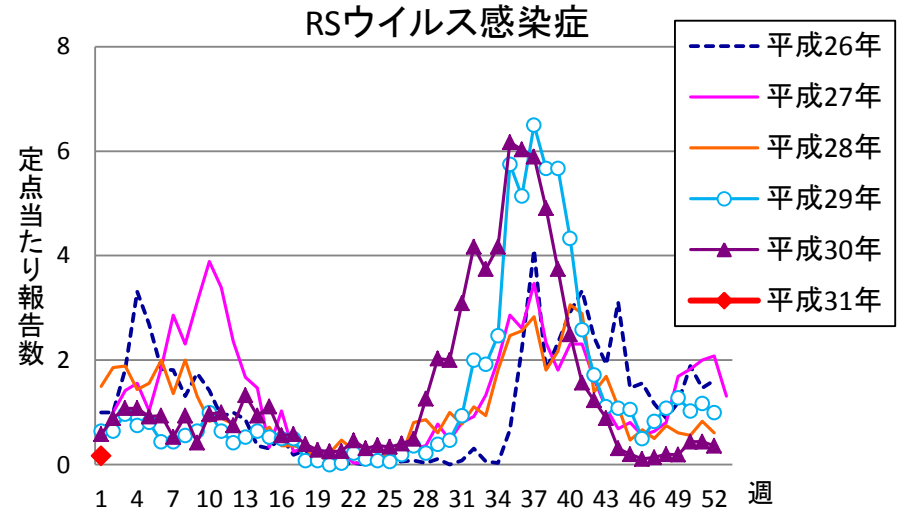
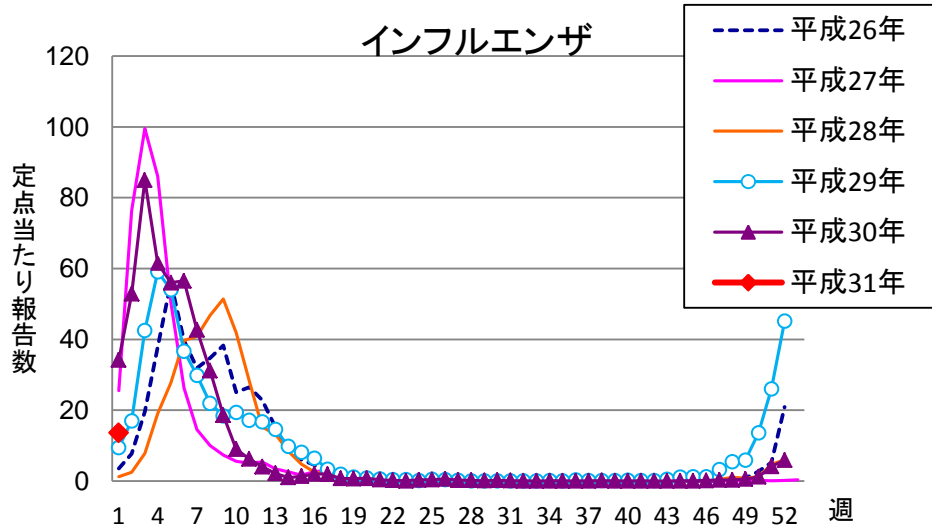
クラミジア肺炎

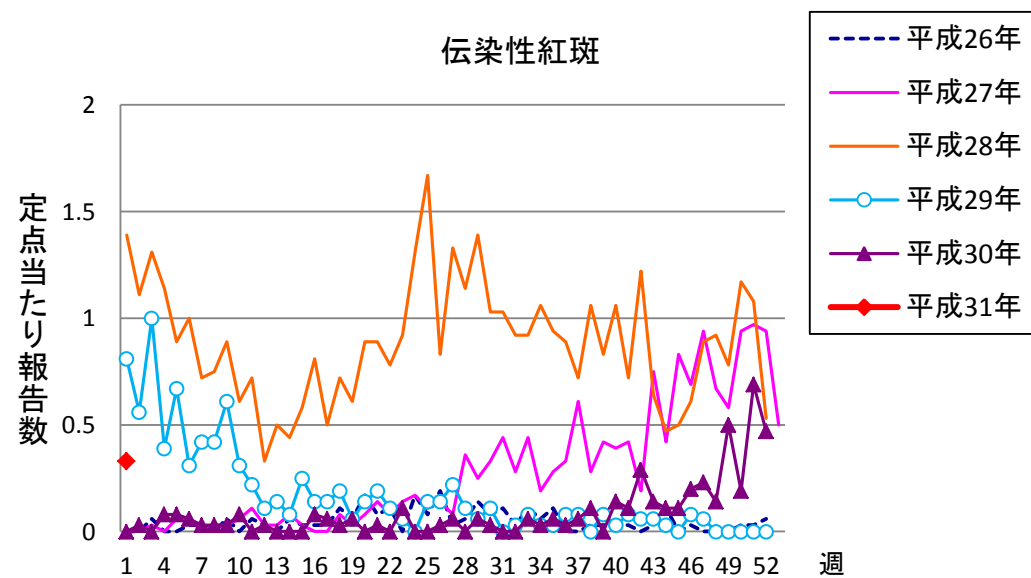
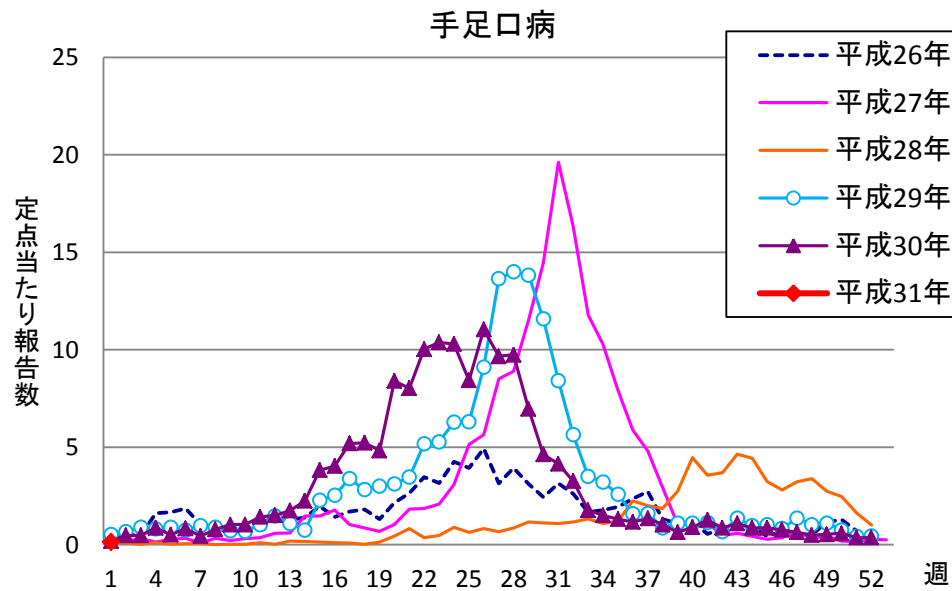
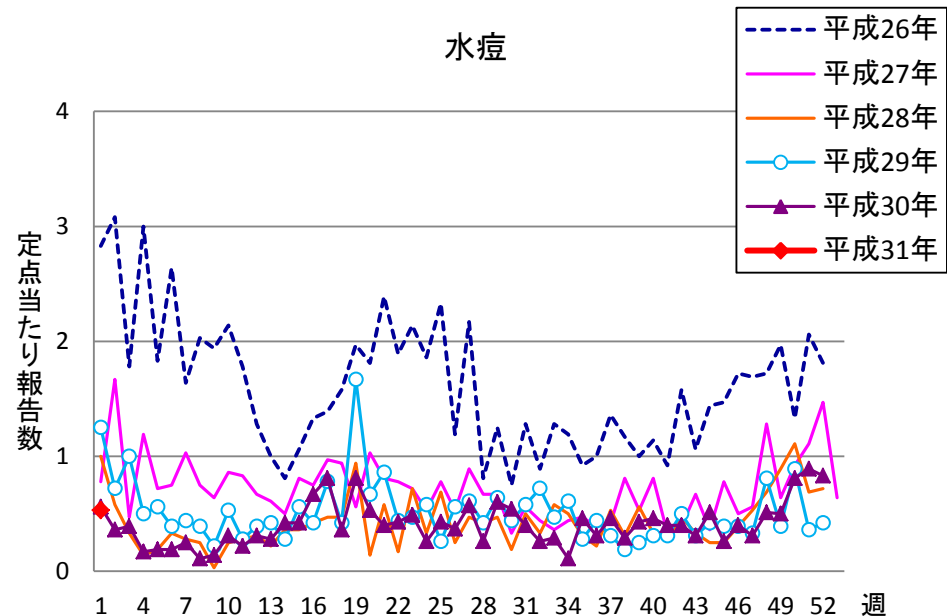
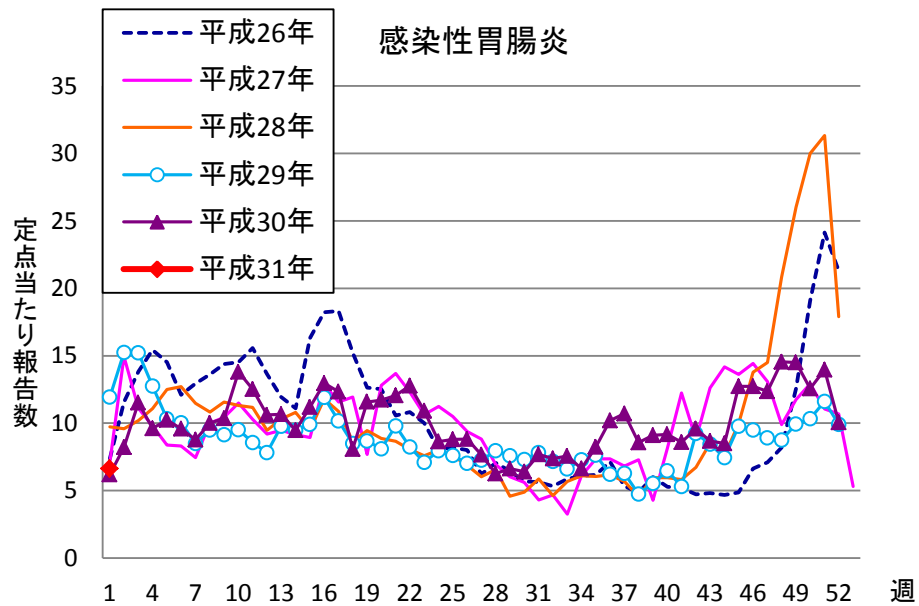


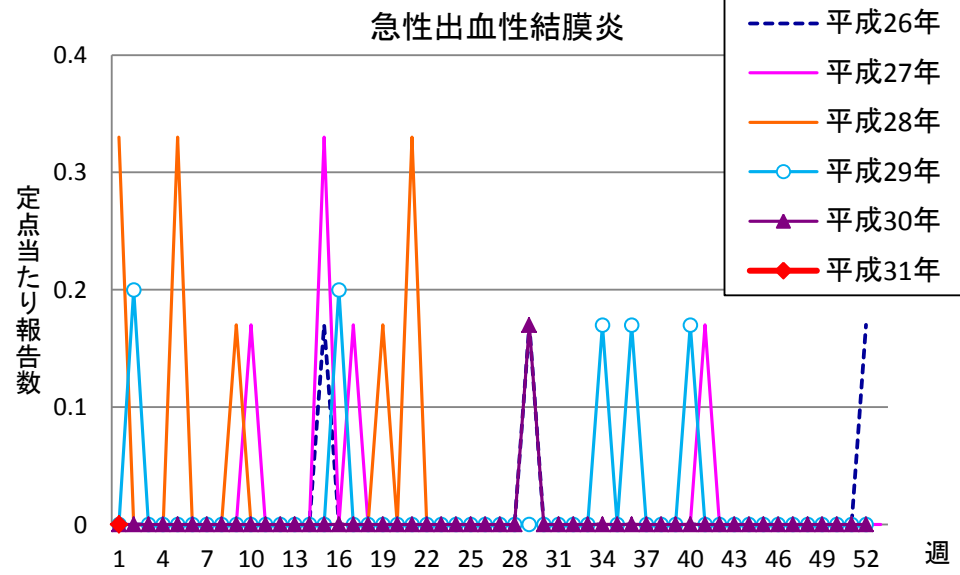
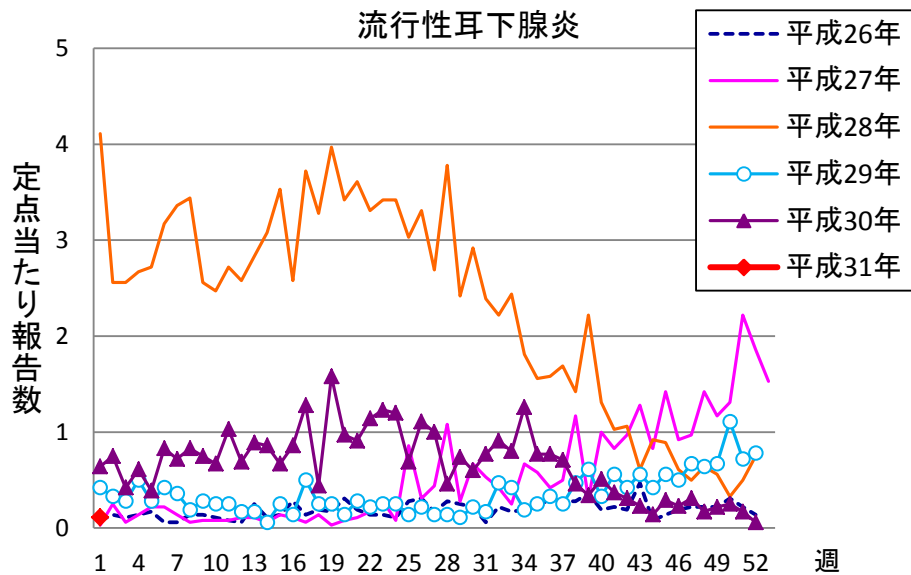
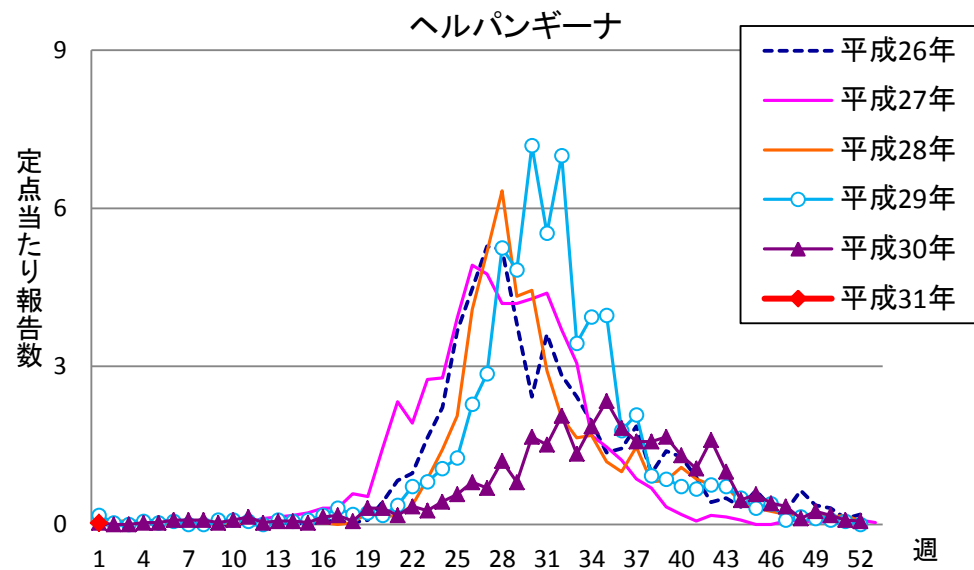
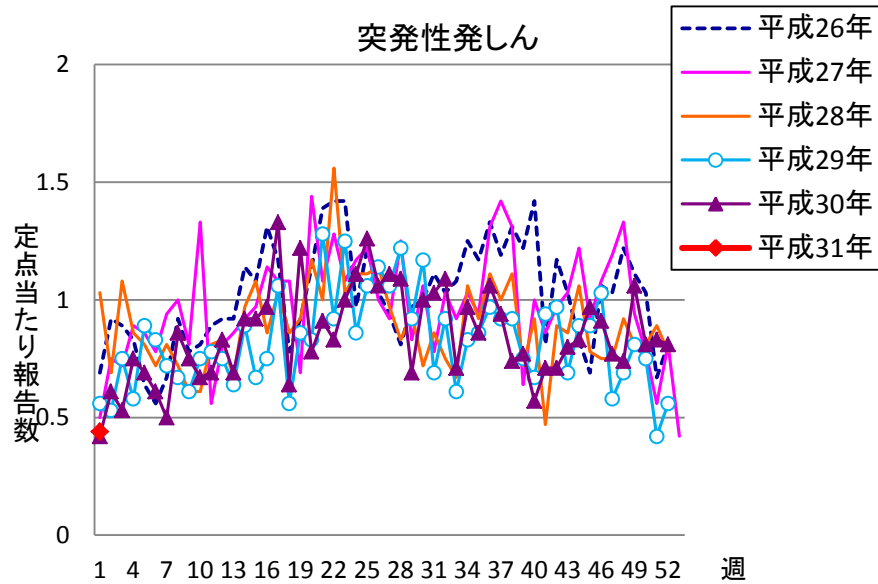
感染性胃腸炎(ロタ)



# 週報 グラフ一覧(平成26年第1週～平成31年1週)

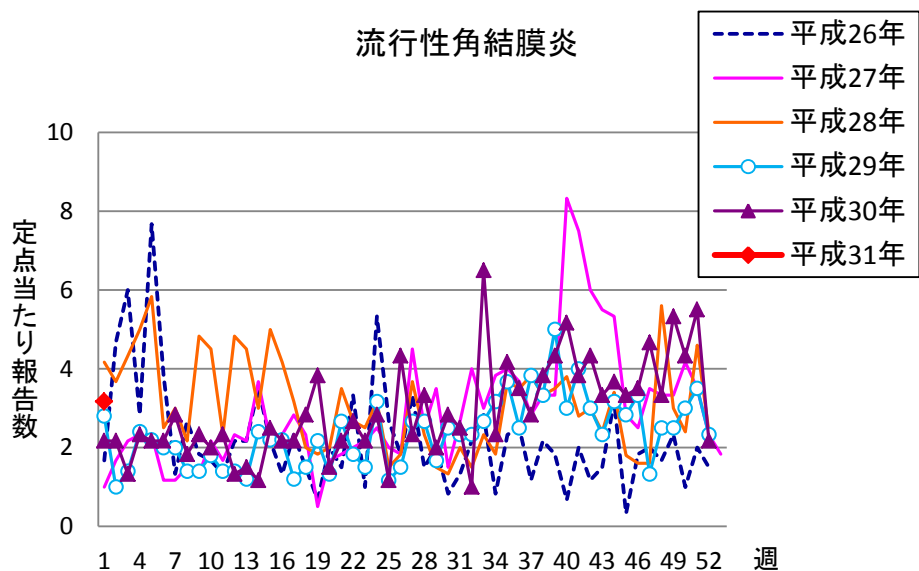




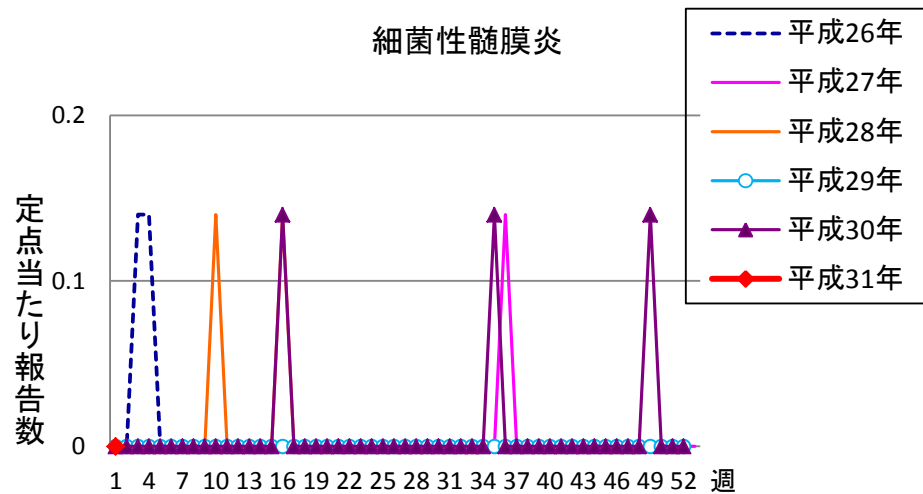




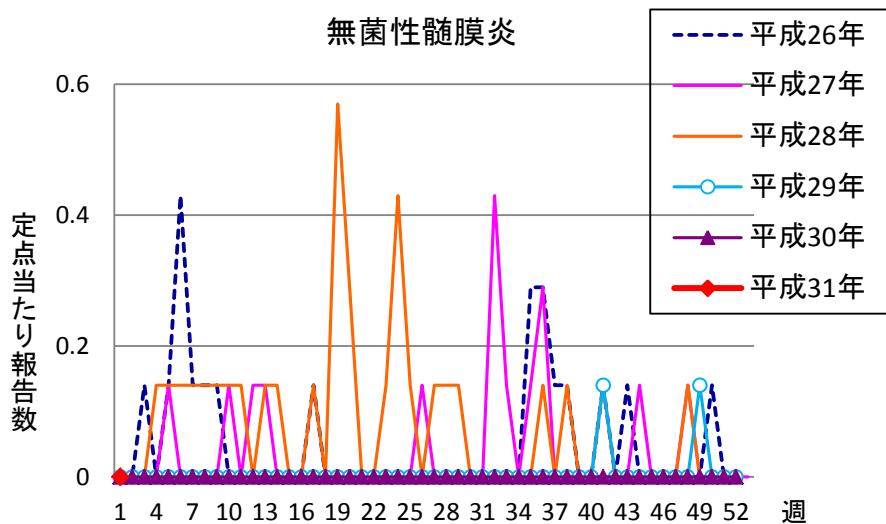
流行性角結膜炎



細菌性髄膜炎



無菌性髄膜炎



マイコプラズマ肺炎

