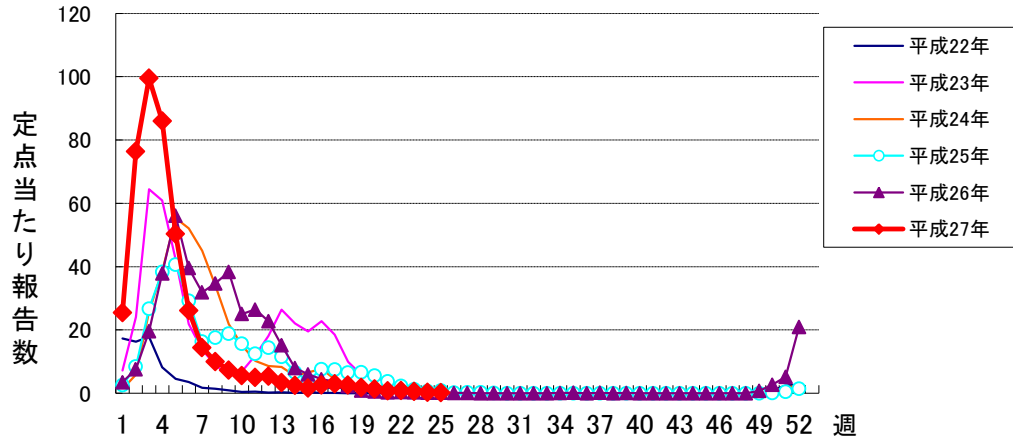
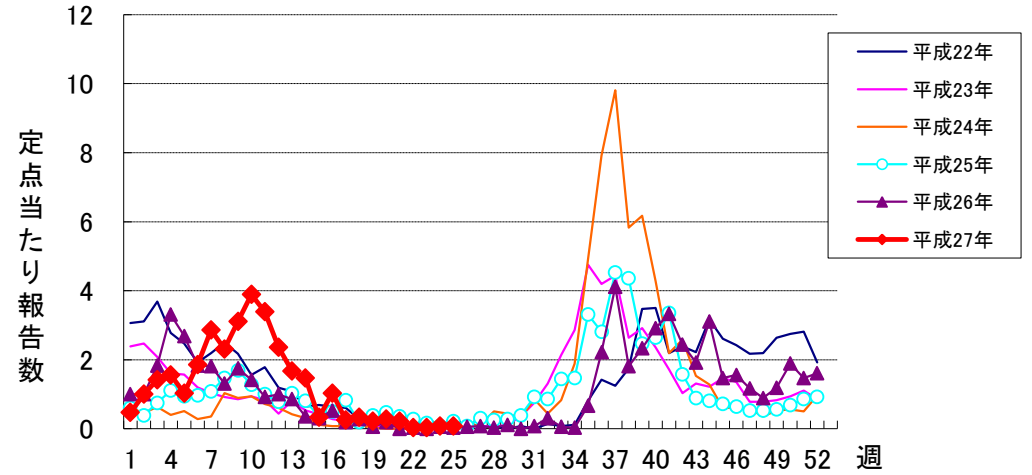


# 週報 グラフ一覧(平成22年第1週～平成27年第25週)

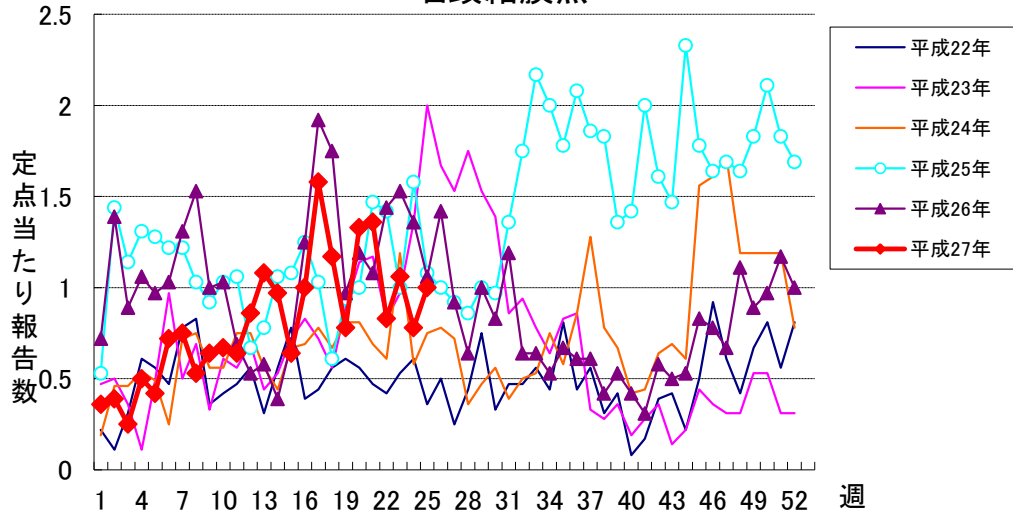
## インフルエンザ



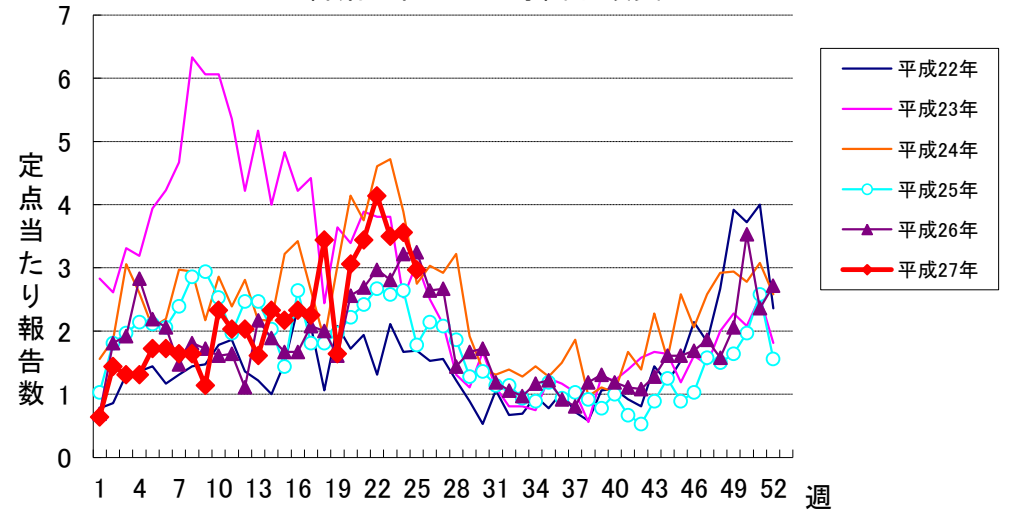
## RSウイルス感染症



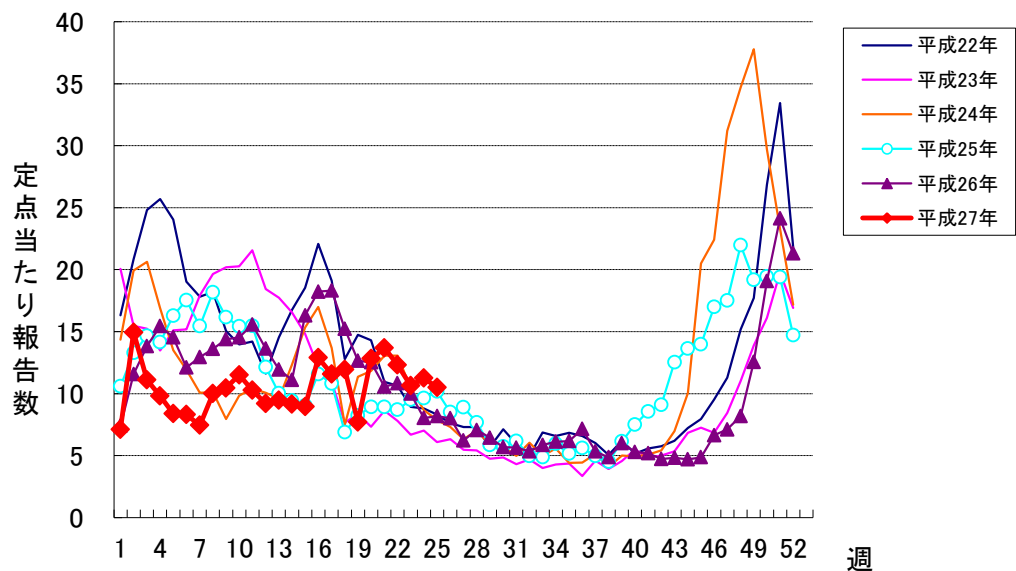
## 咽頭結膜熱



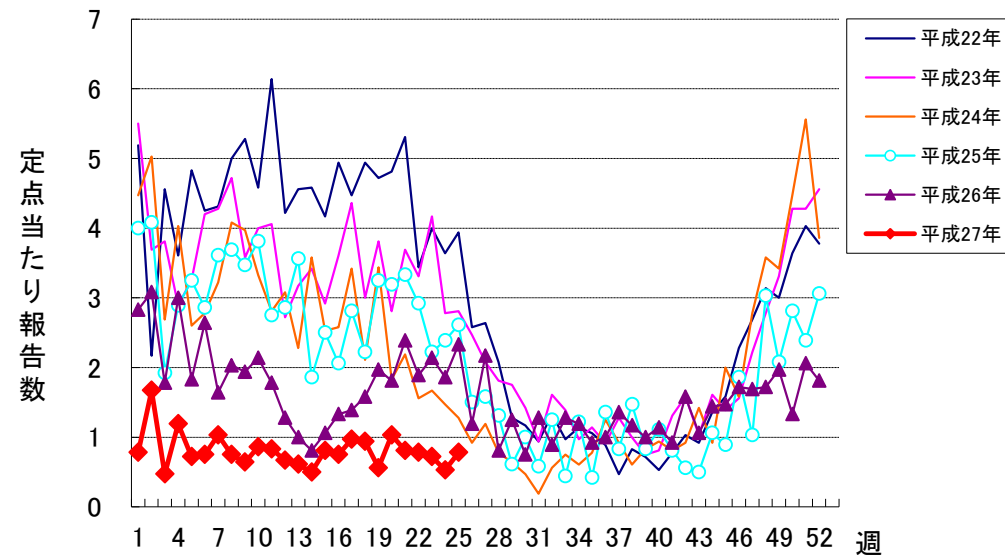
## A群溶血性レンサ球菌咽頭炎



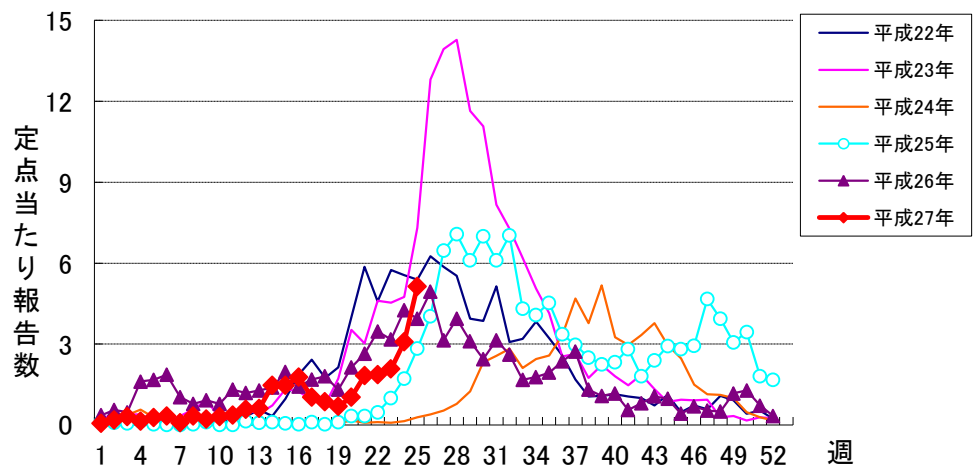
### 感染性胃腸炎



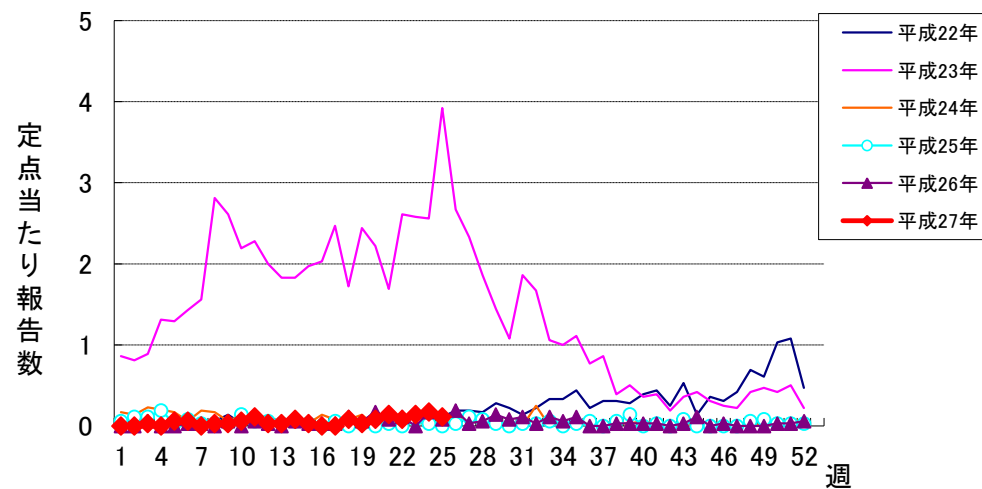
### 水痘



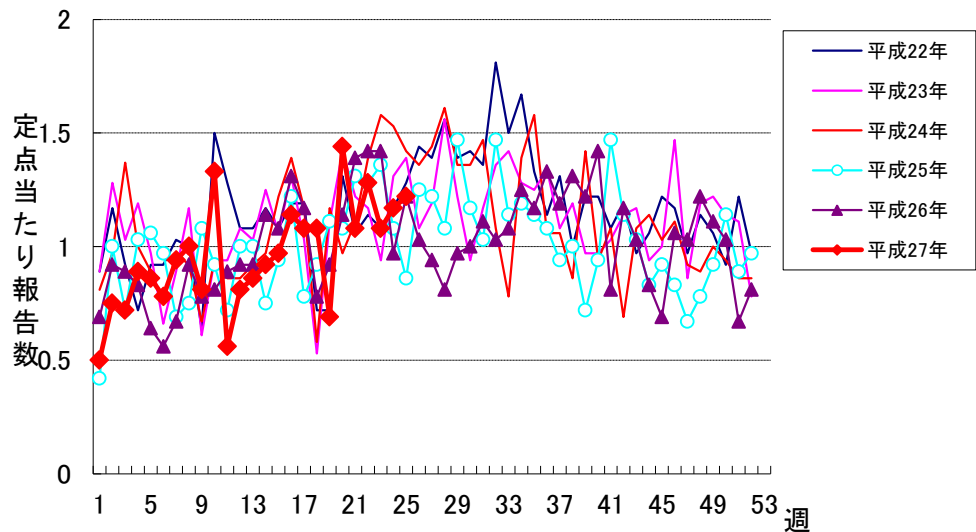
### 手足口病



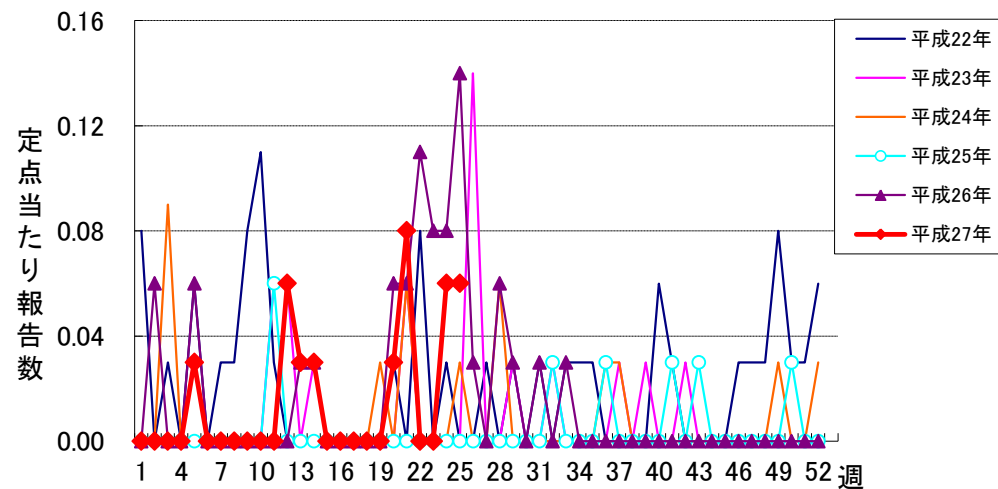
### 伝染性紅斑



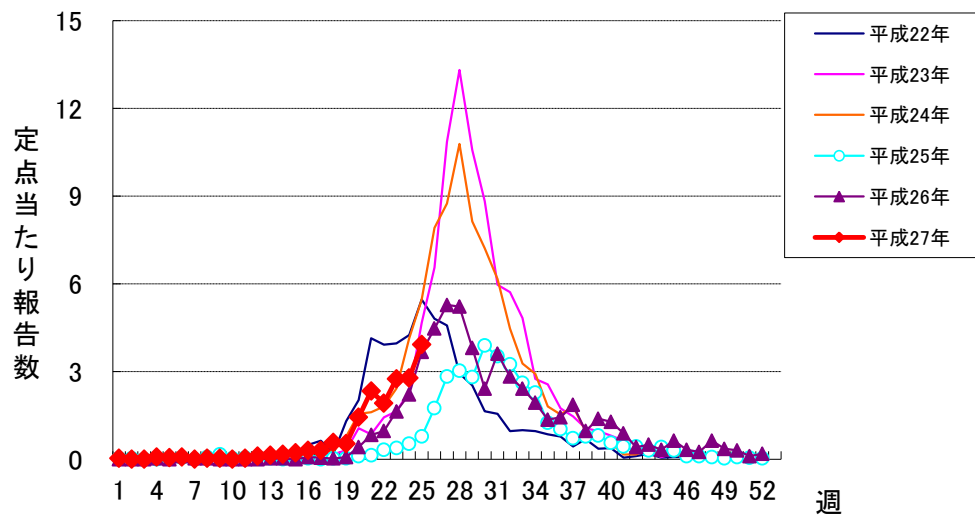
### 突発性発しん



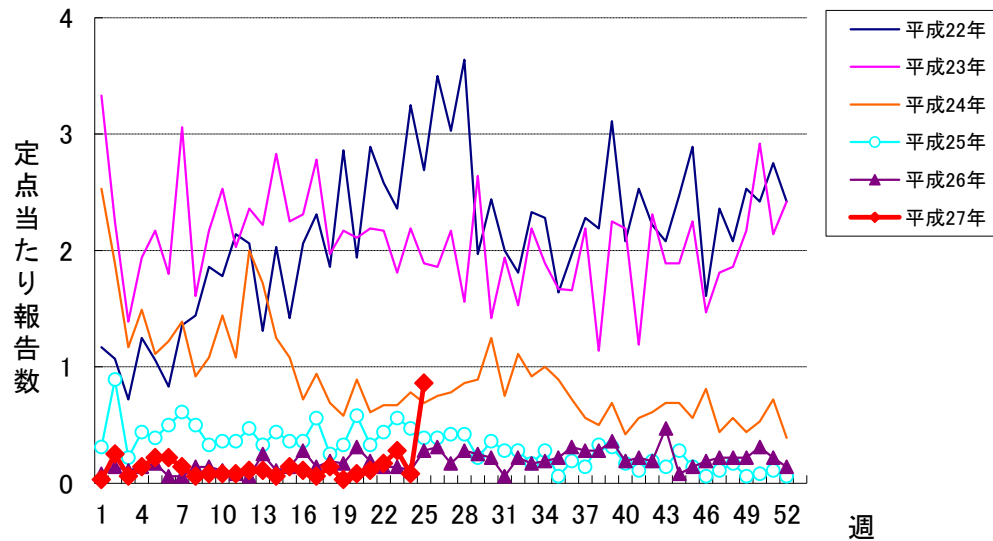
### 百日咳



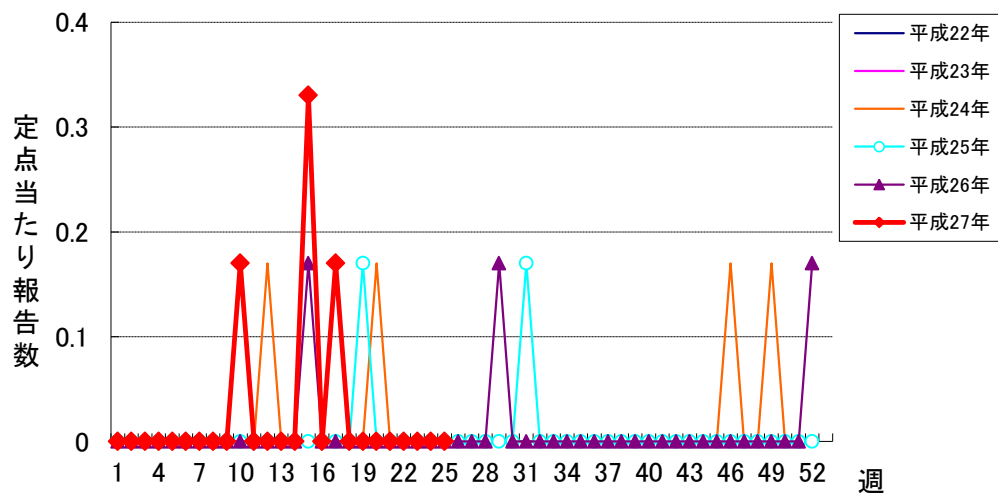
### ヘルパンギーナ



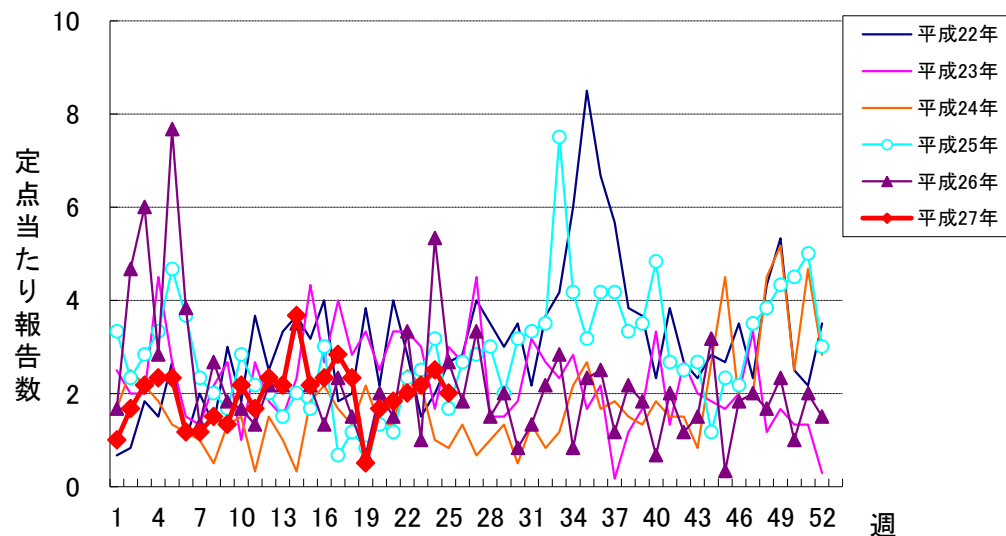
### 流行性耳下腺炎



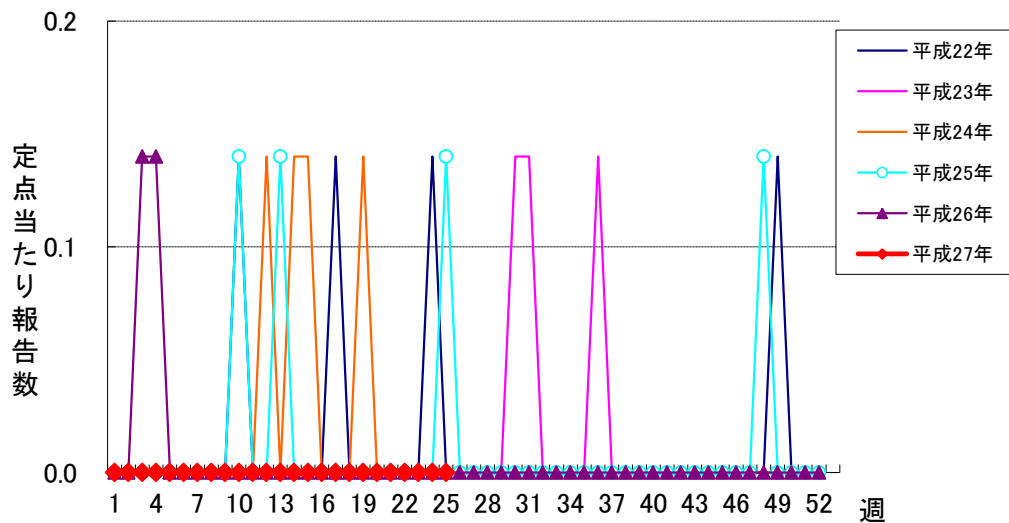
急性出血性結膜炎



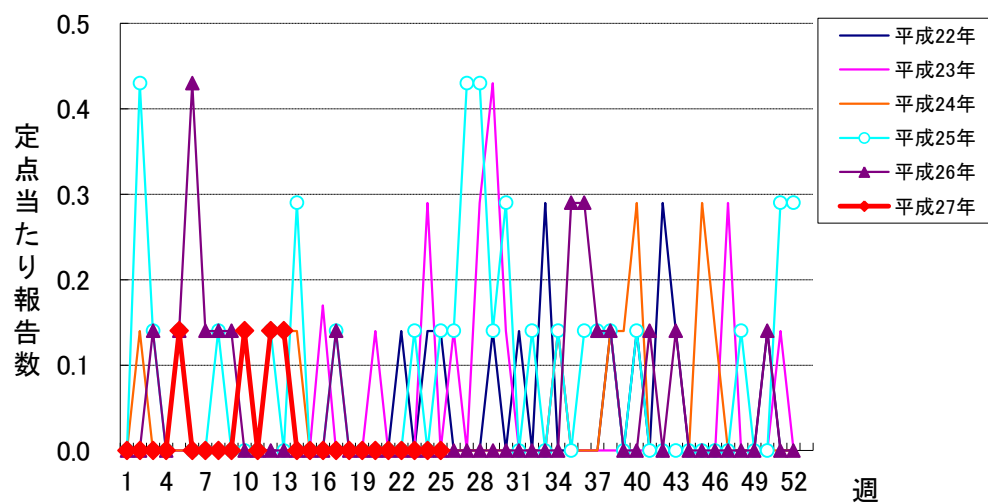
流行性角結膜炎



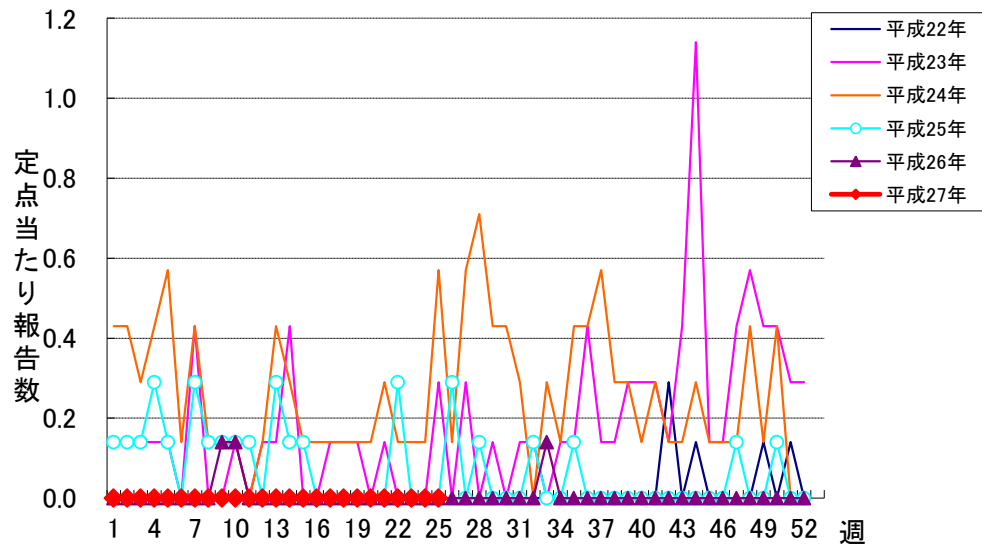
細菌性髄膜炎



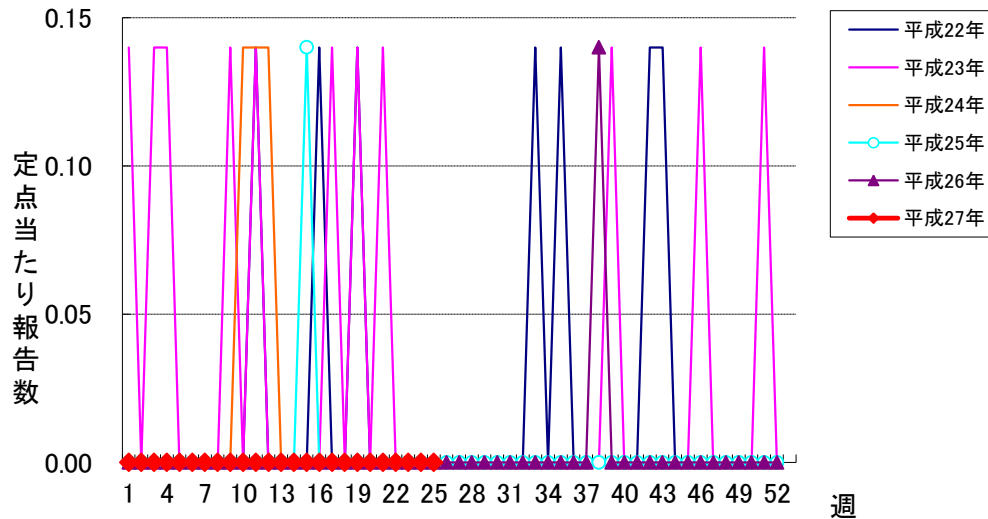
無菌性髄膜炎



### マイコプラズマ肺炎



### クラミジア肺炎



### 感染性胃腸炎(ロタウイルス)

