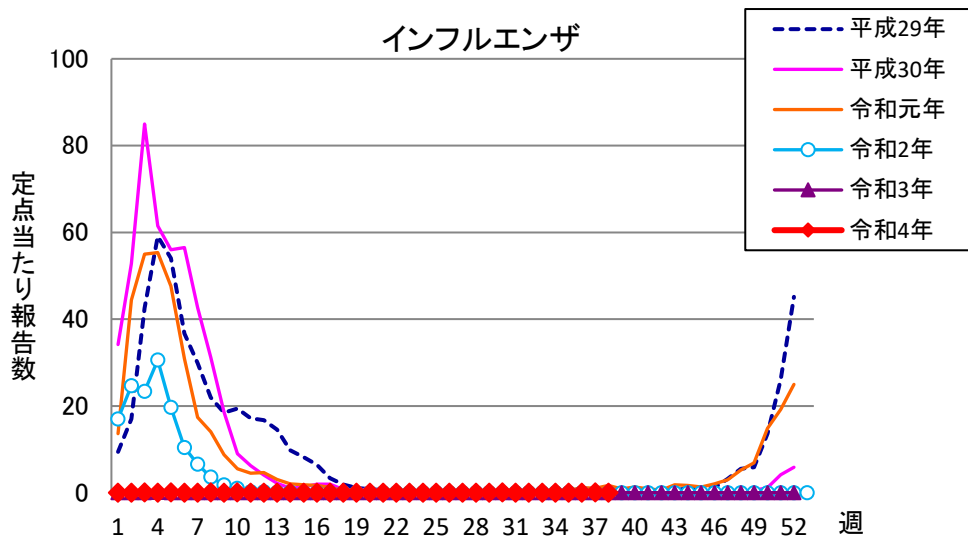
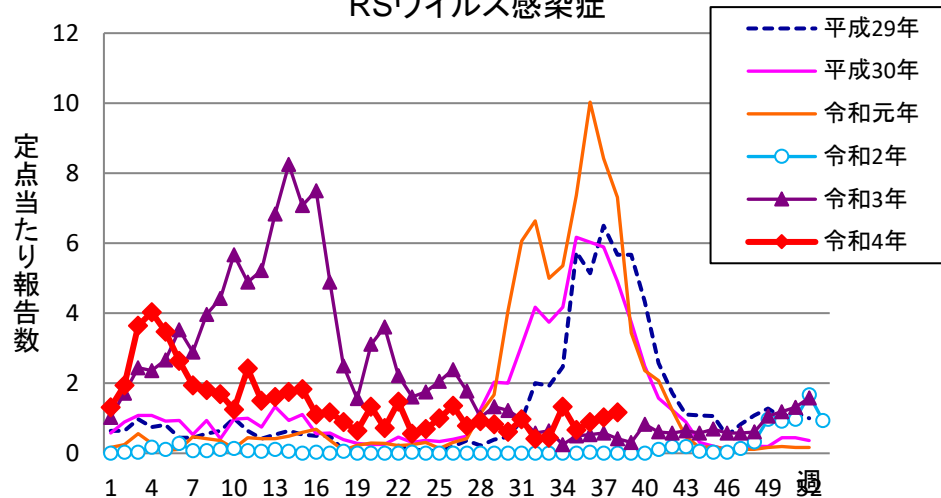


# 週報 グラフ一覧(平成29年第1週～令和4年第38週)

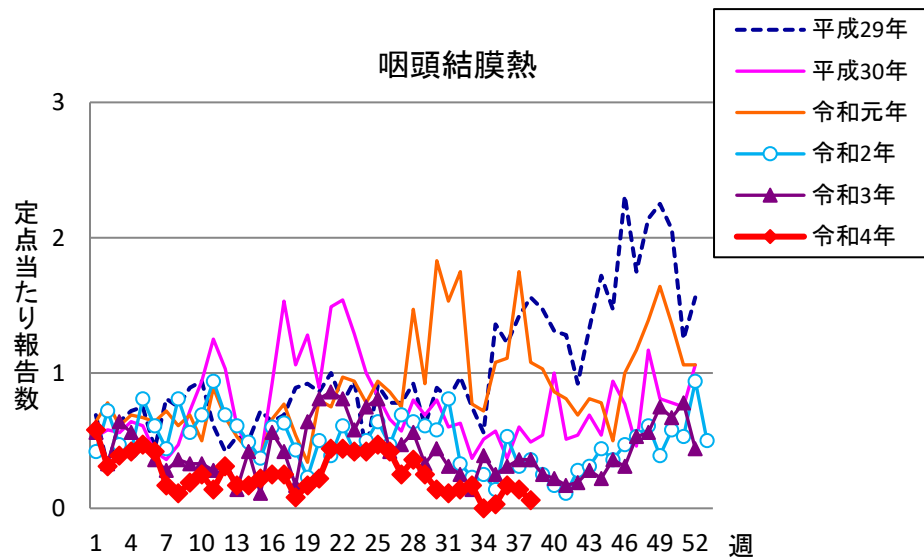
## インフルエンザ



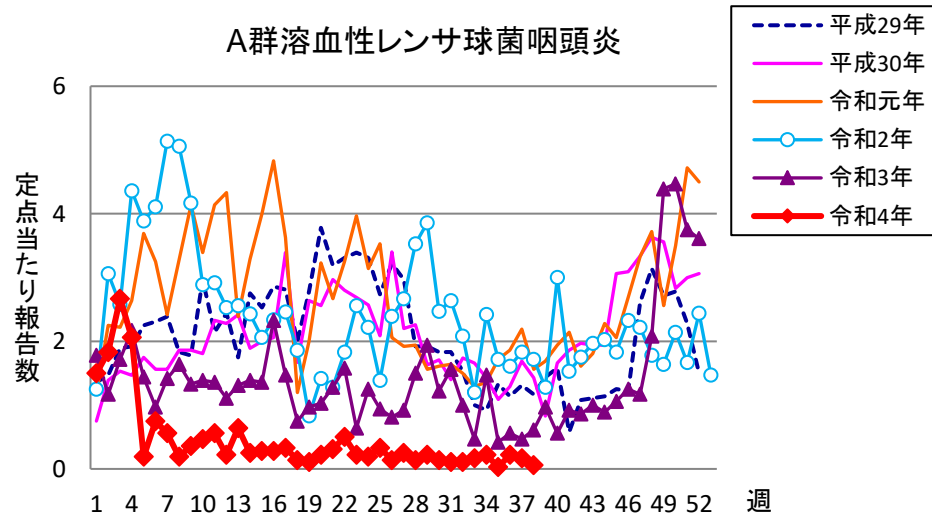
## RSウイルス感染症

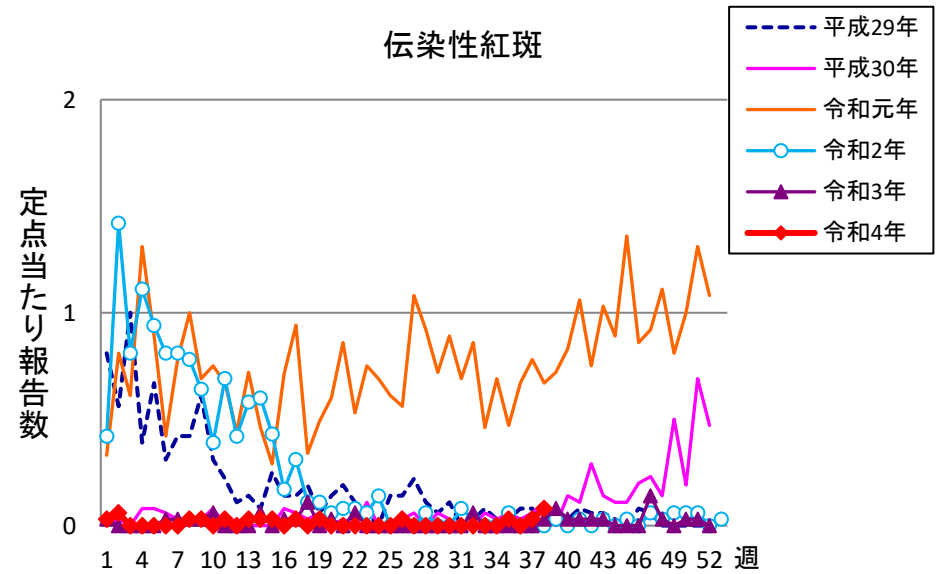
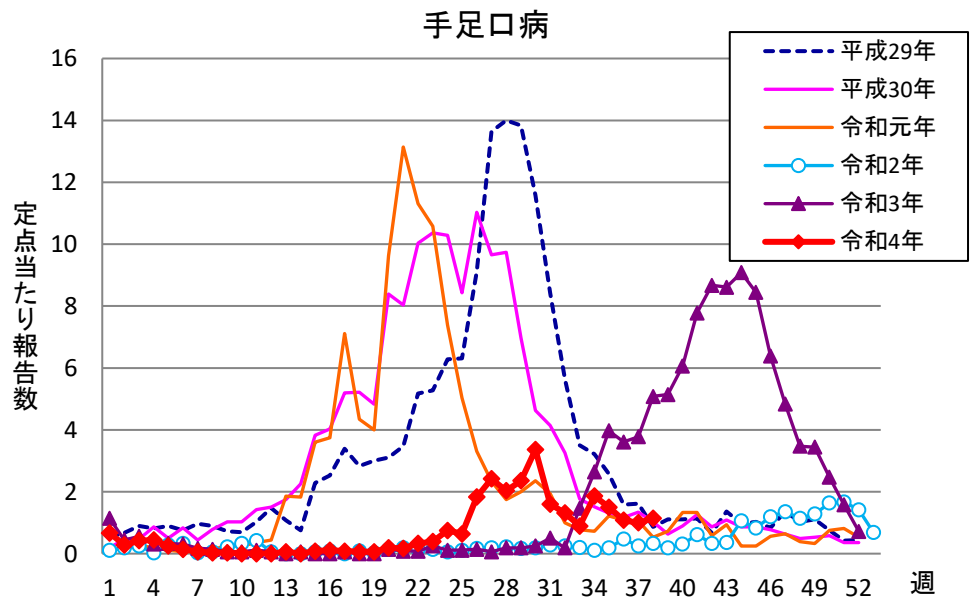
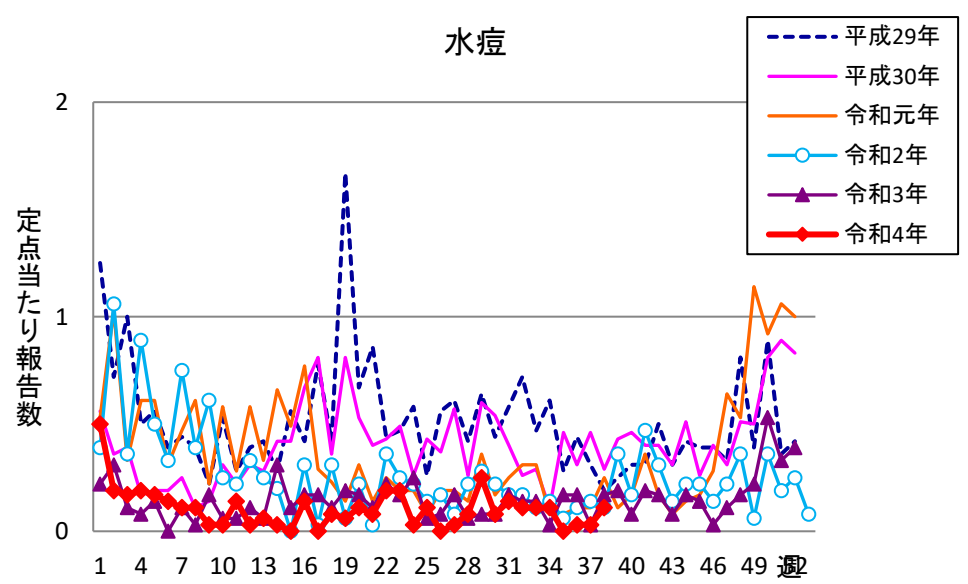
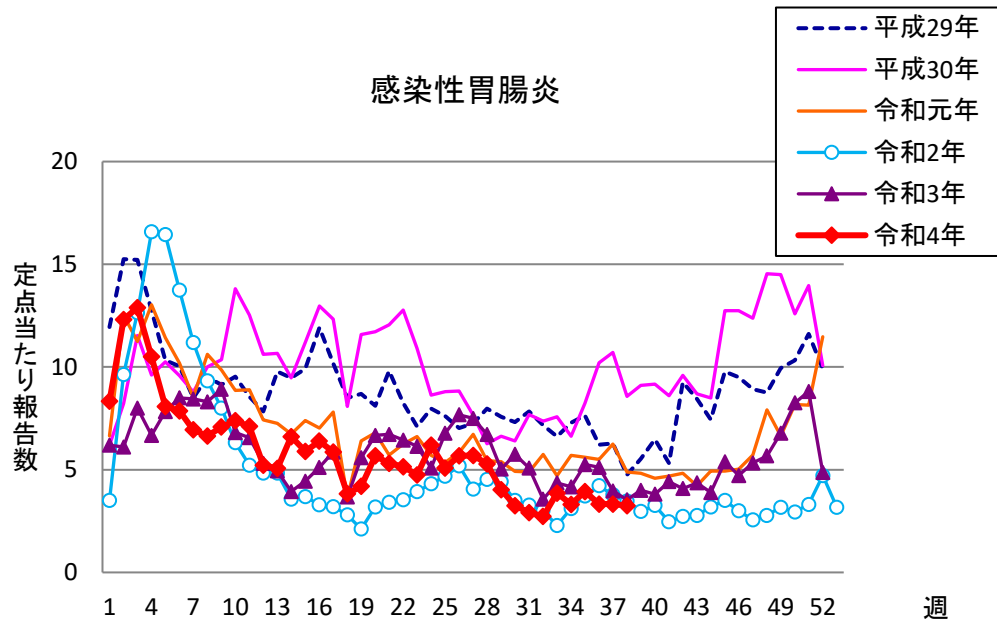


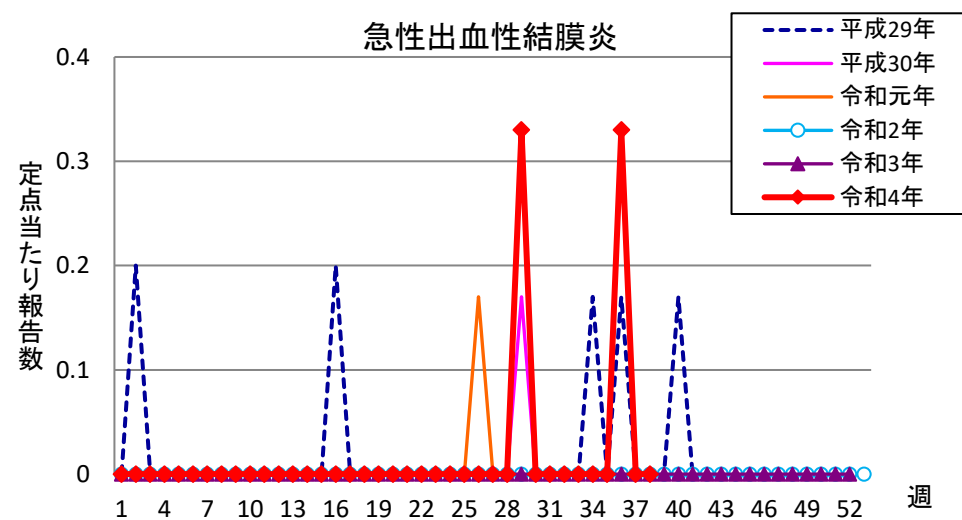
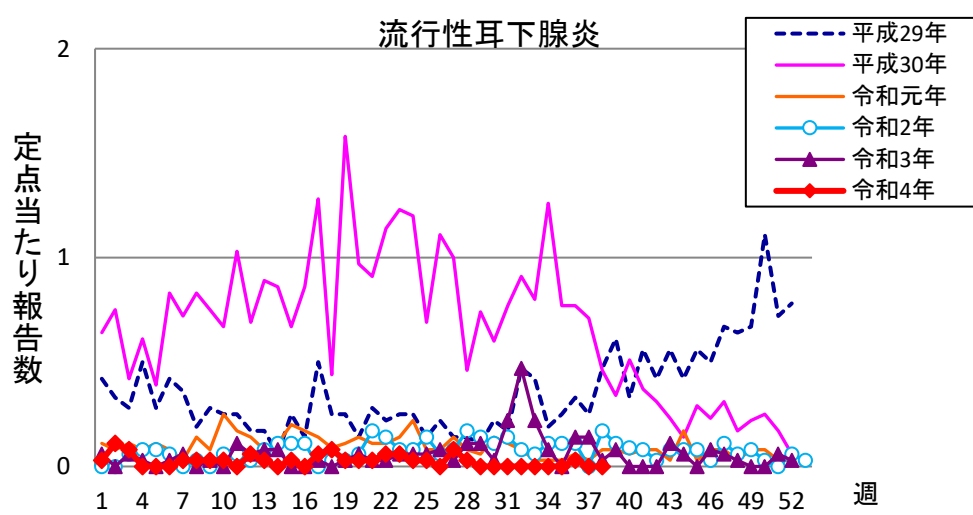
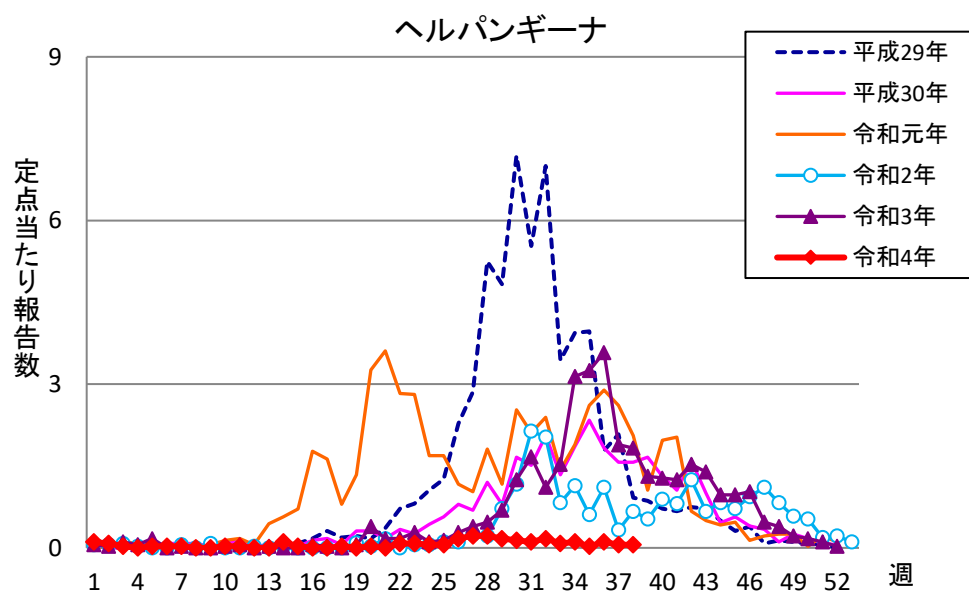
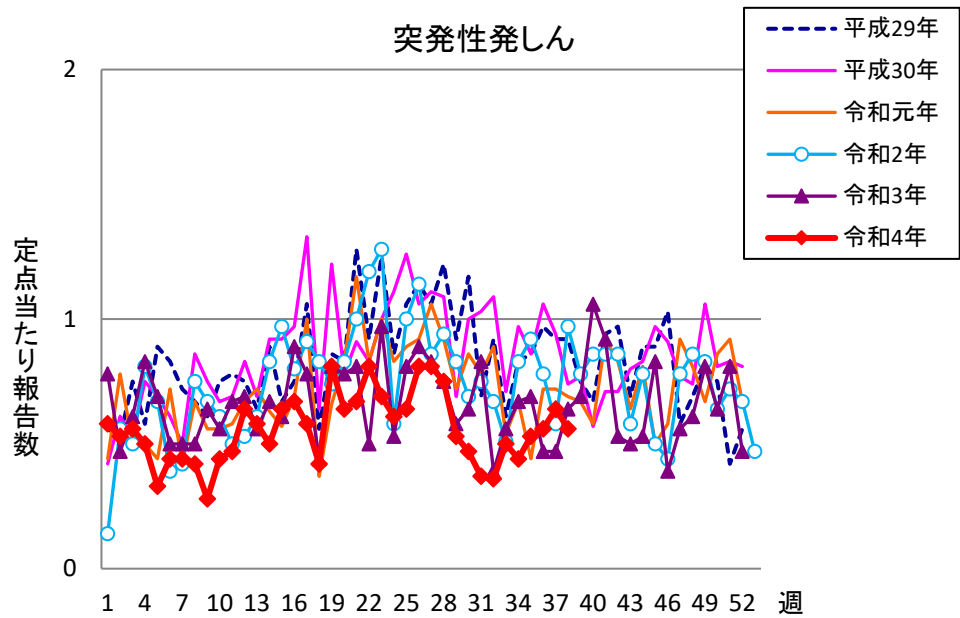
## 咽頭結膜熱



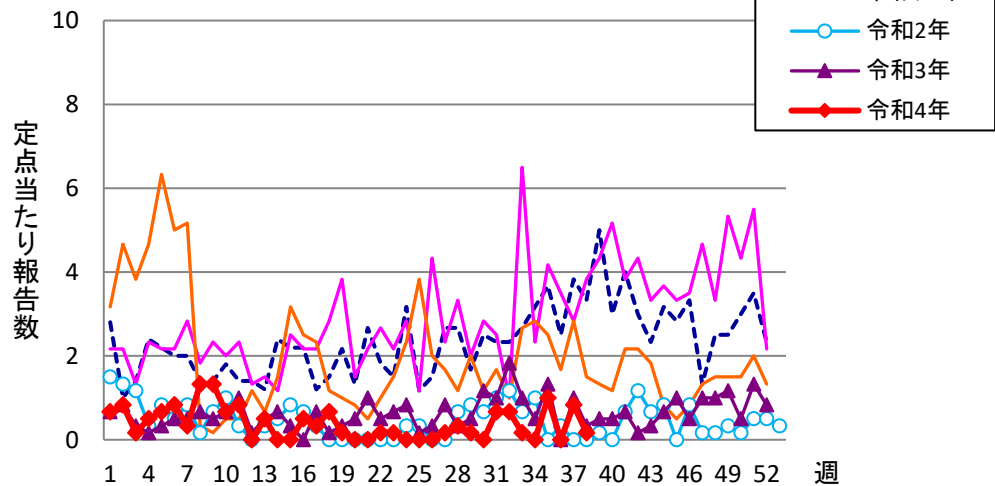
## A群溶血性レンサ球菌咽頭炎



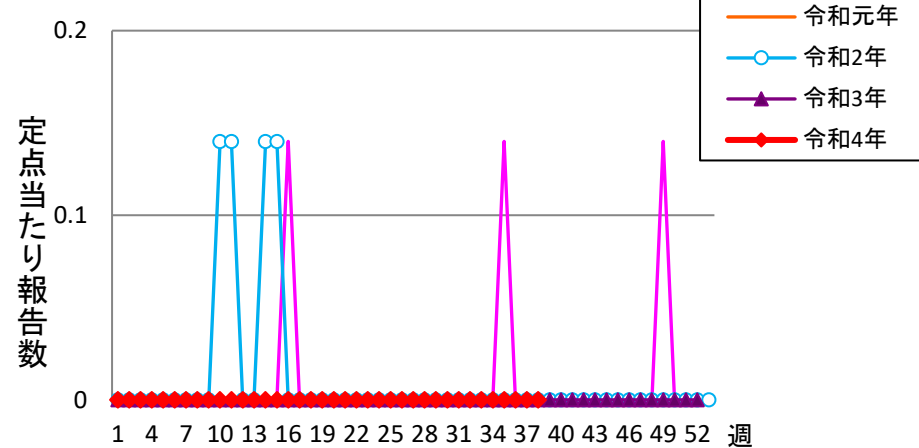




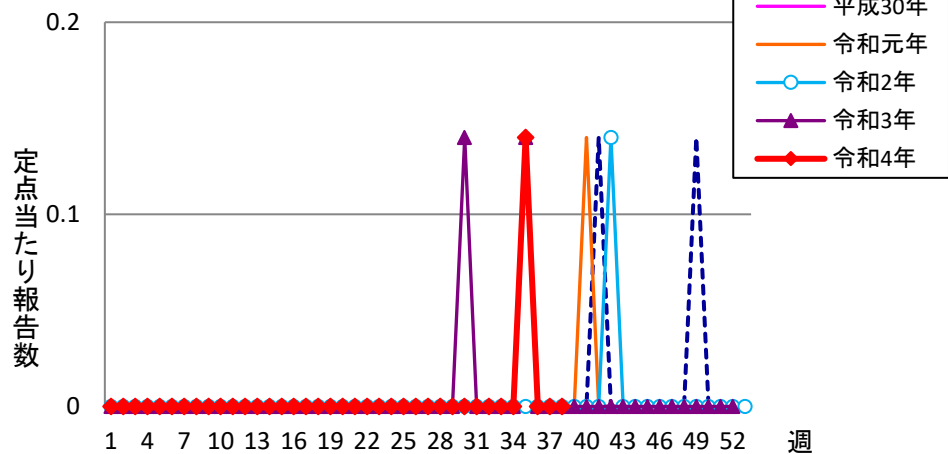
流行性角結膜炎



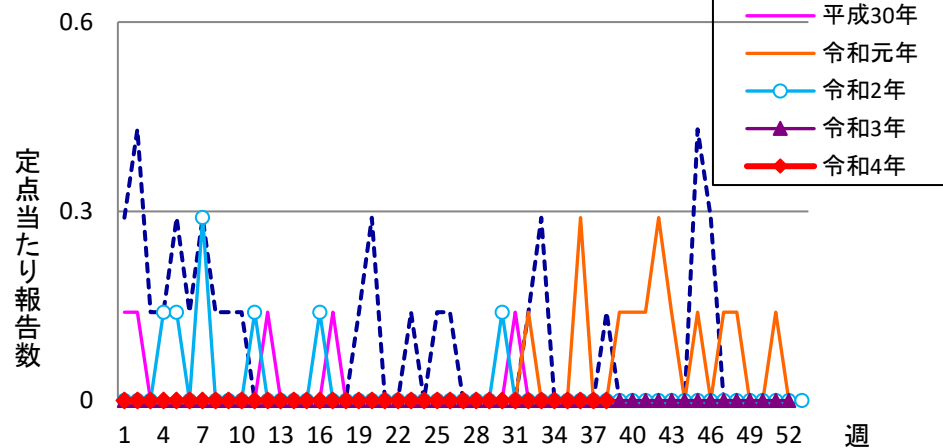
細菌性髄膜炎



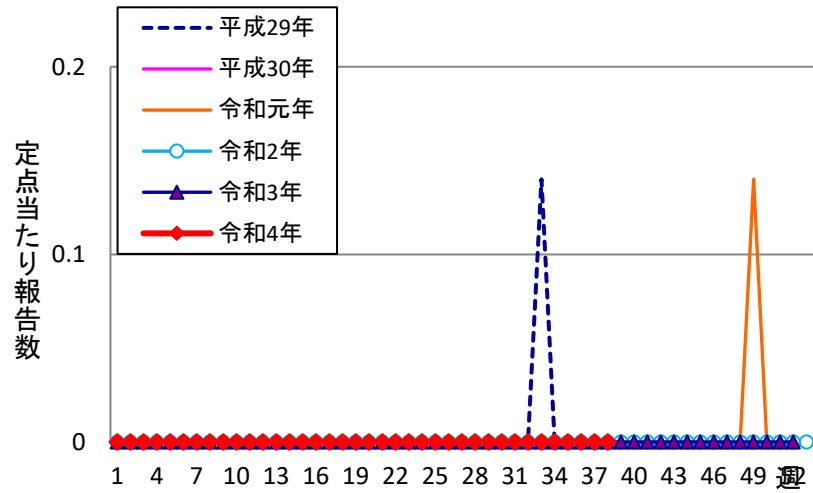
無菌性髄膜炎



マイコプラズマ肺炎



クラミジア肺炎



感染性胃腸炎(ロタ)

