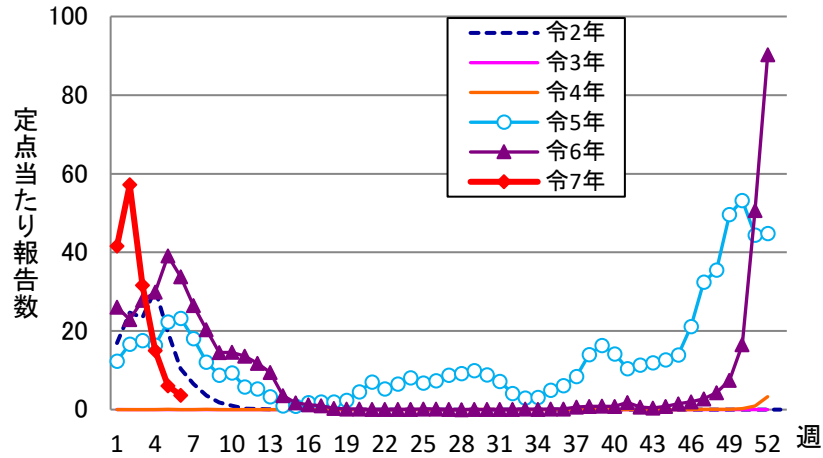
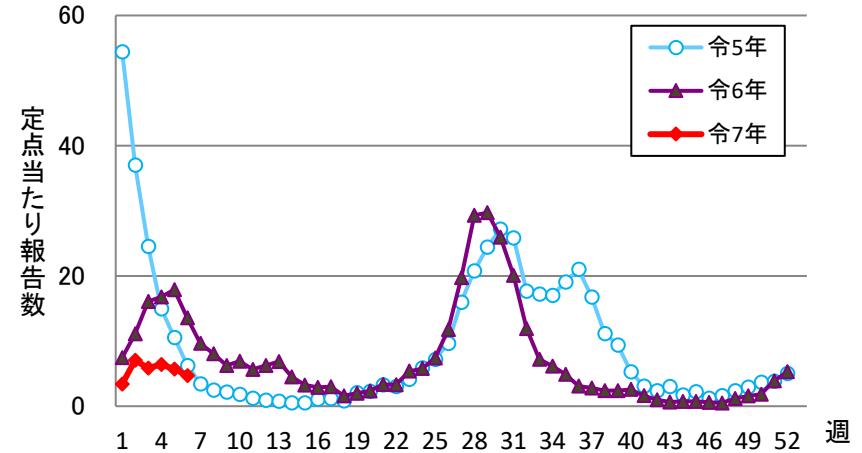


# 週報 グラフ一覧(令和02年第01週～令和07年第06週)

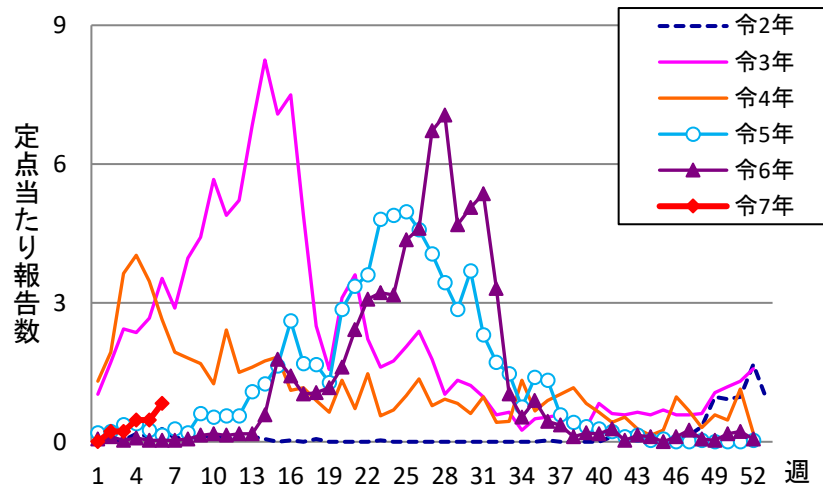
## インフルエンザ



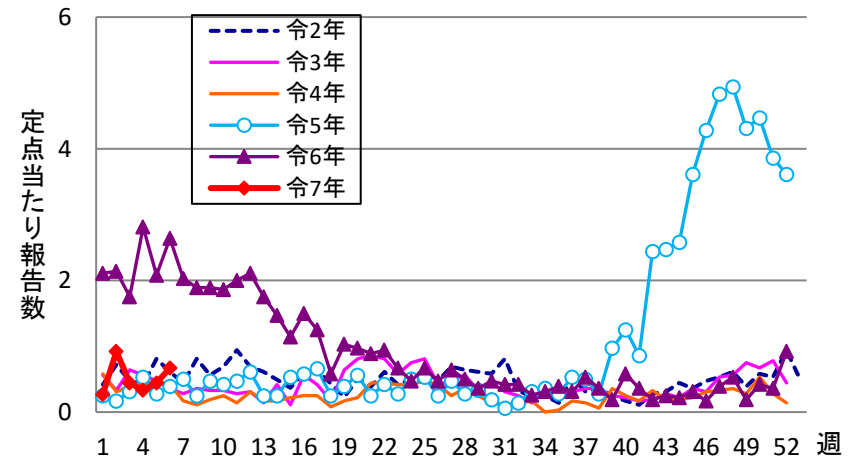
## 新型コロナウイルス感染症

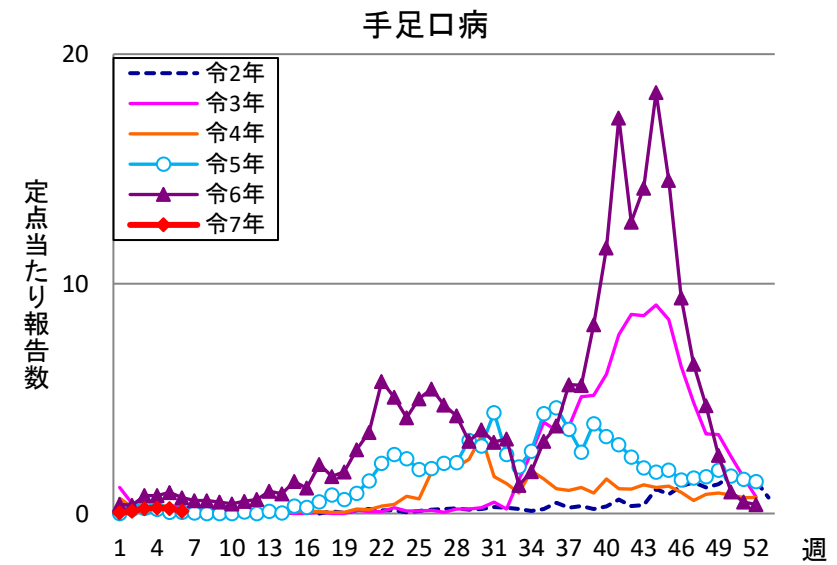
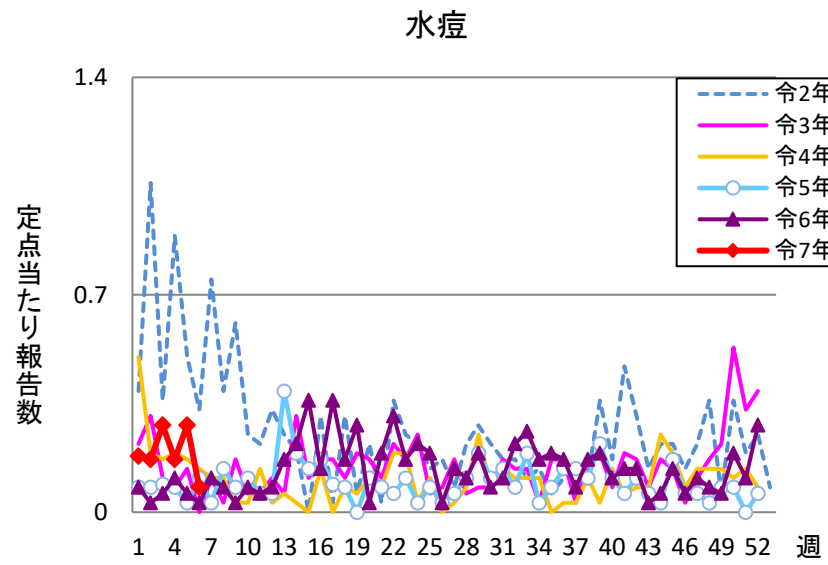
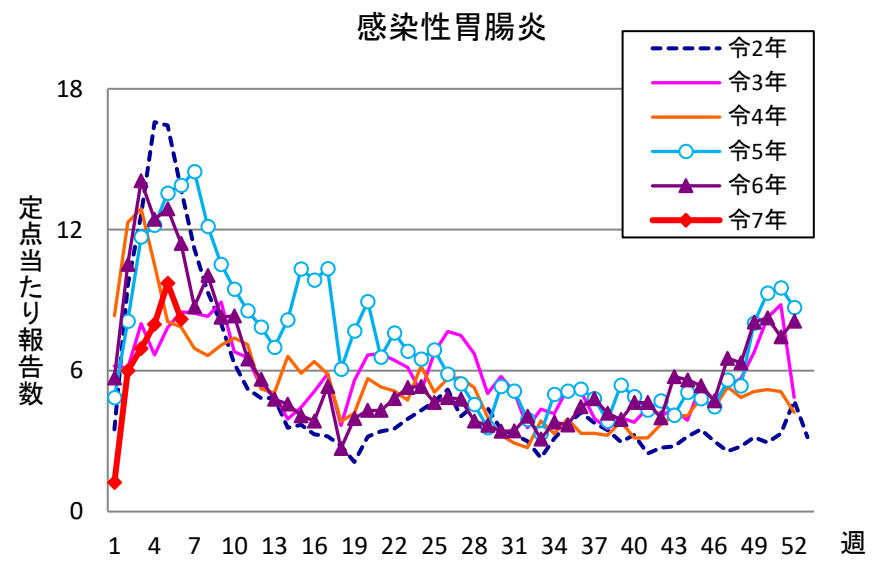
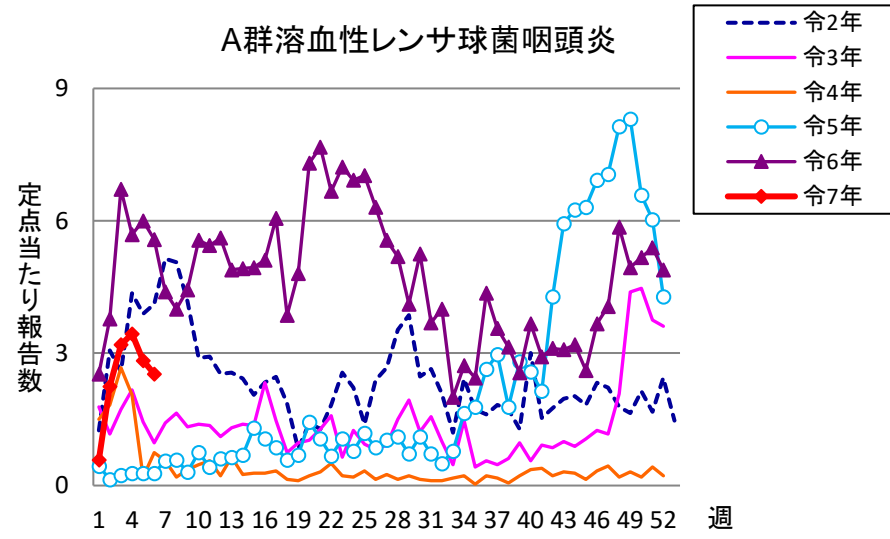


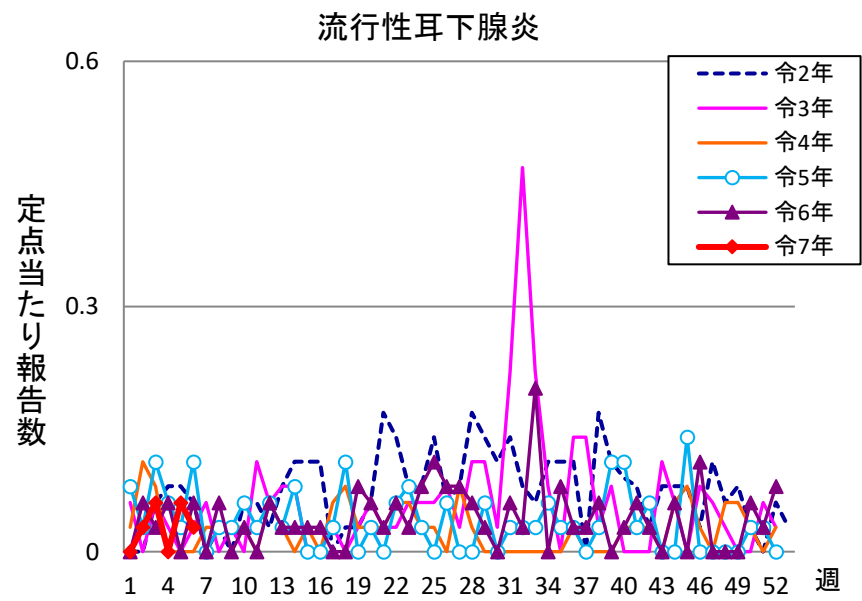
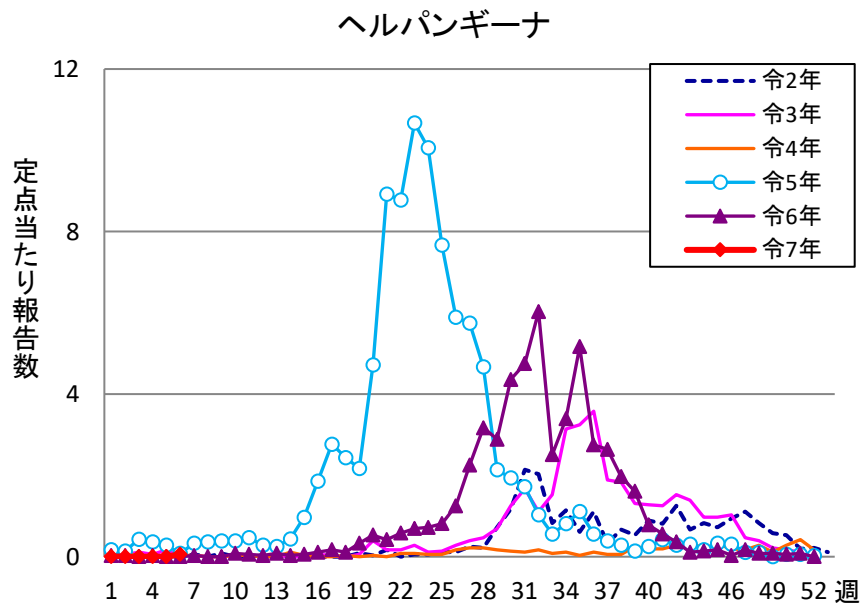
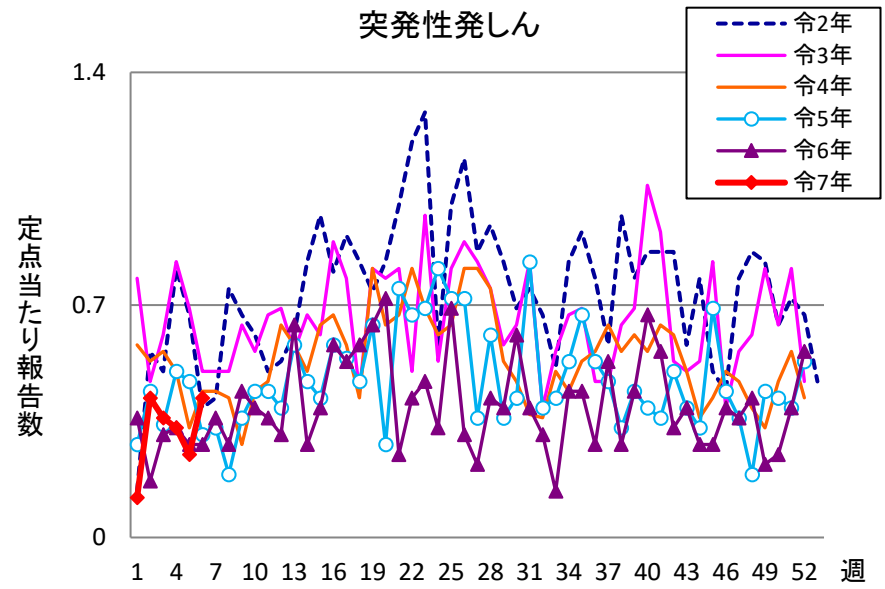
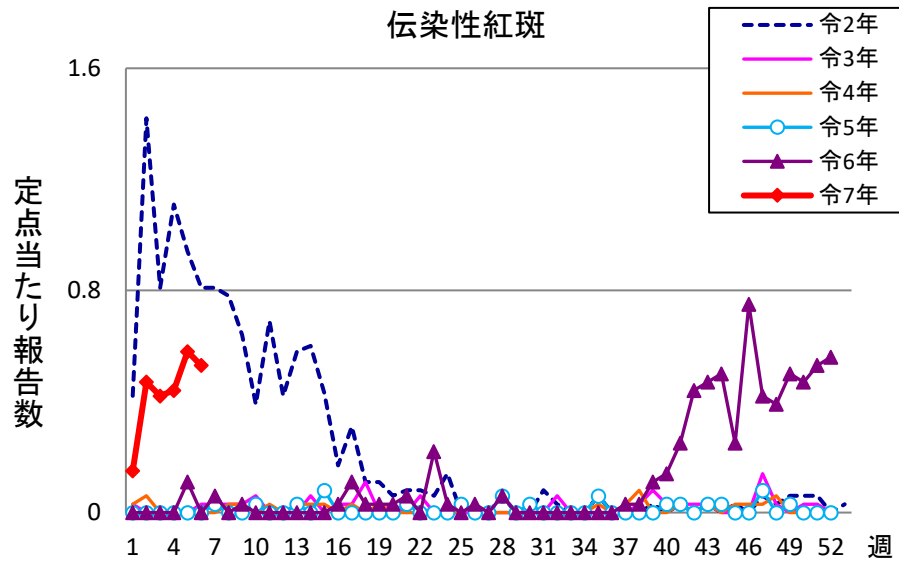
## RSウイルス感染症



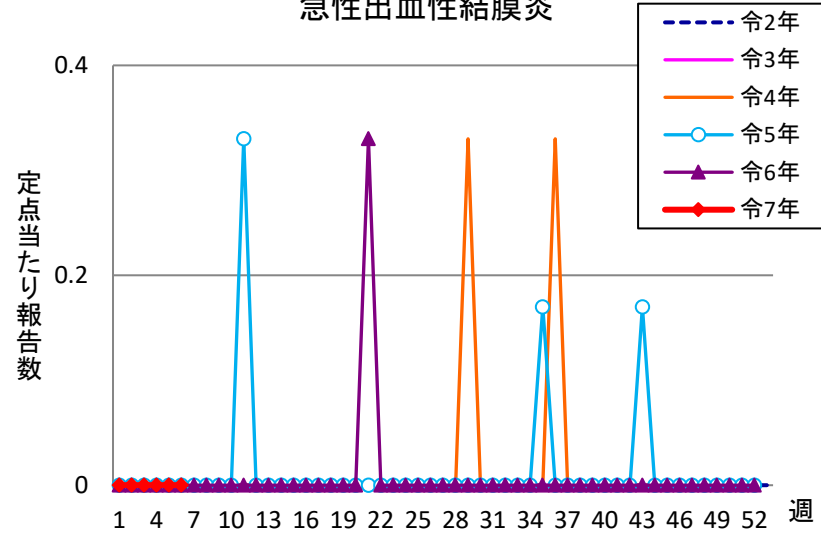
## 咽頭結膜熱



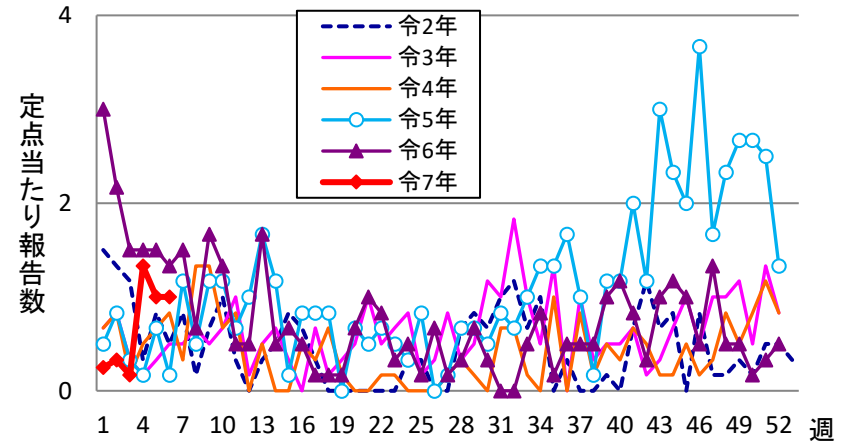




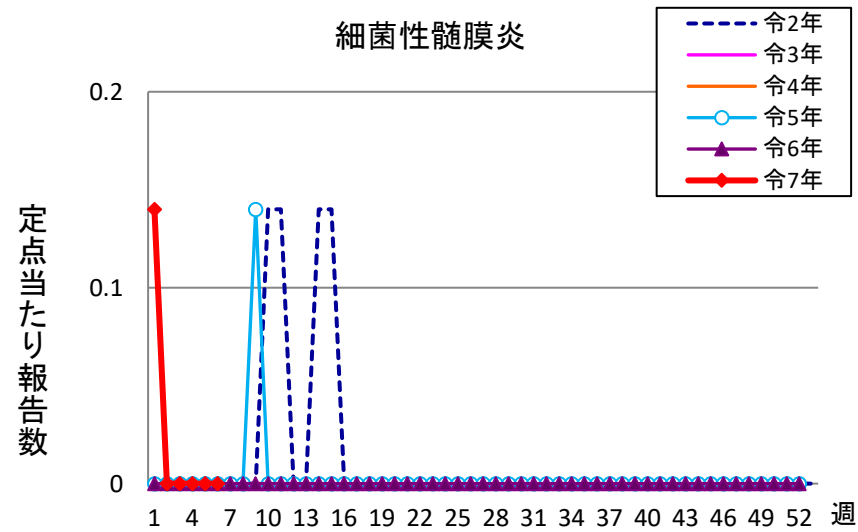
急性出血性結膜炎



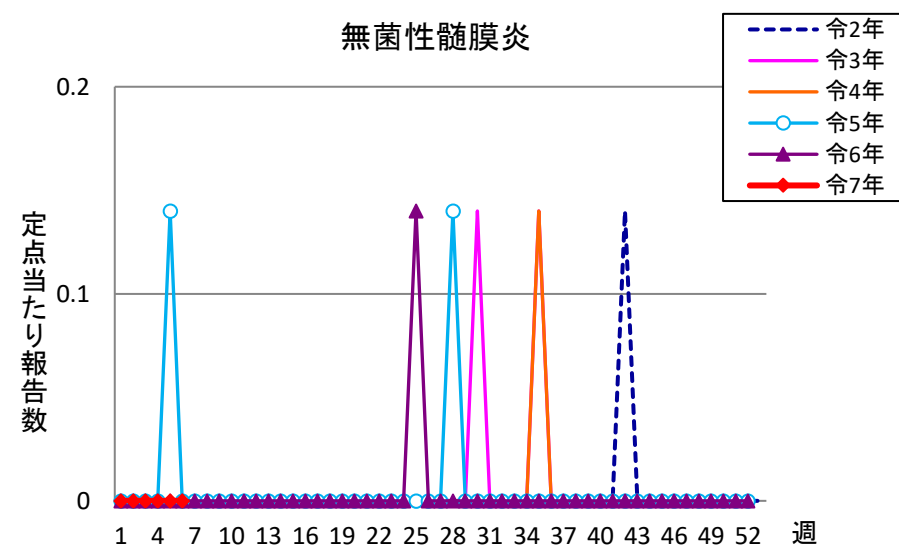
流行性角結膜炎



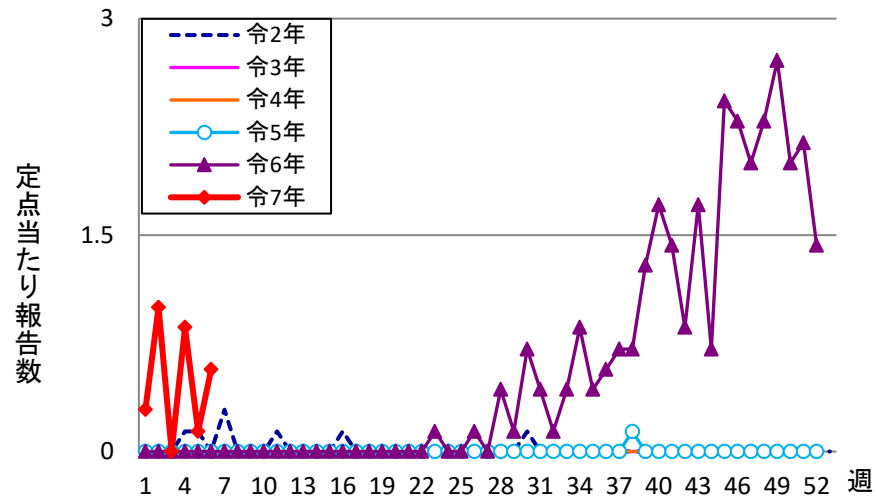
細菌性髄膜炎



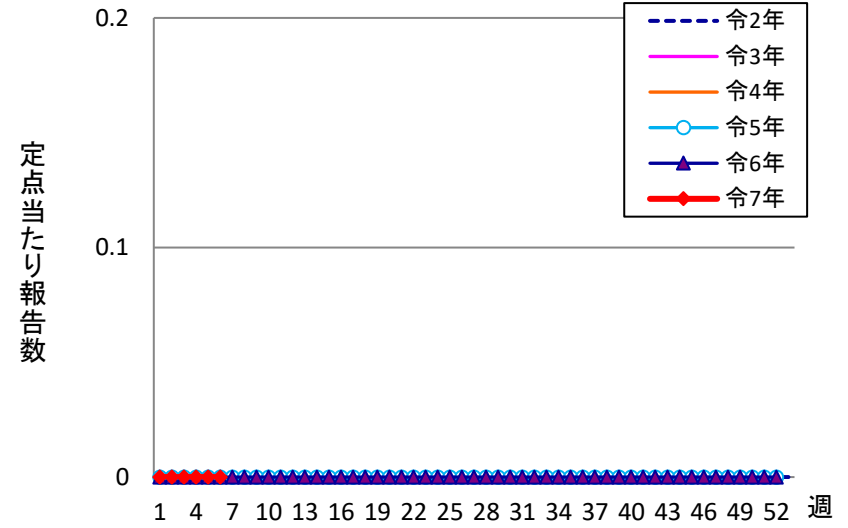
無菌性髄膜炎



マイコプラズマ肺炎



クラミジア肺炎



感染性胃腸炎(ロタ)

