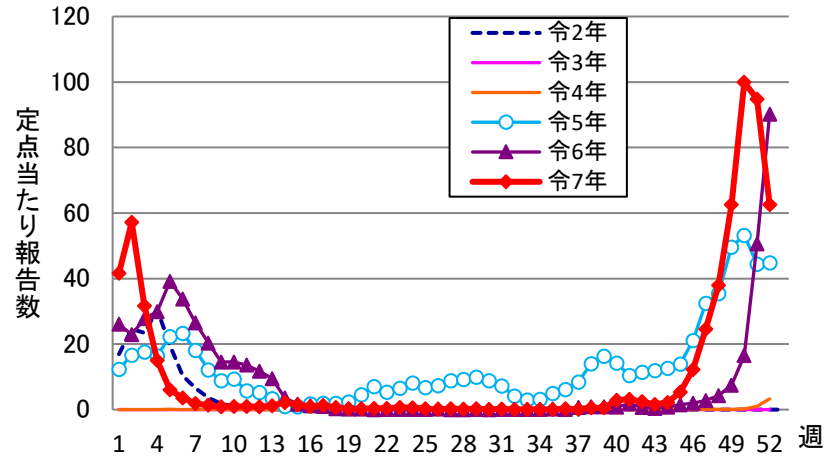
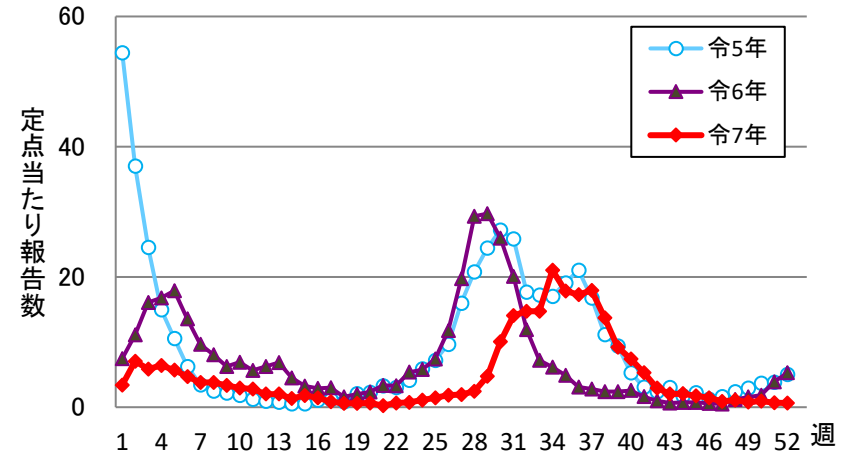


週報 グラフ一覧(令和02年第01週～令和07年第52週)

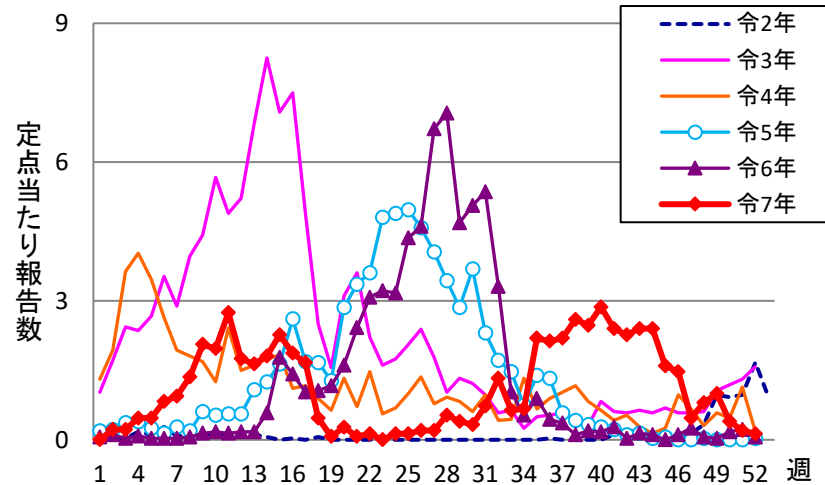
インフルエンザ



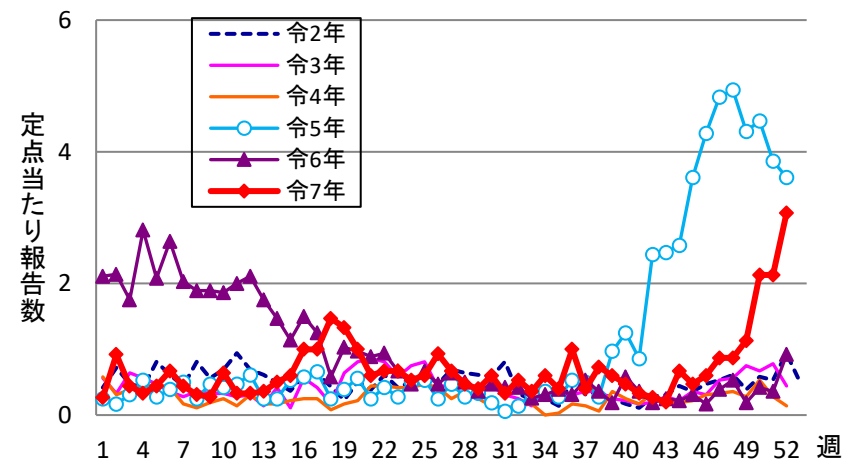
新型コロナウイルス感染症

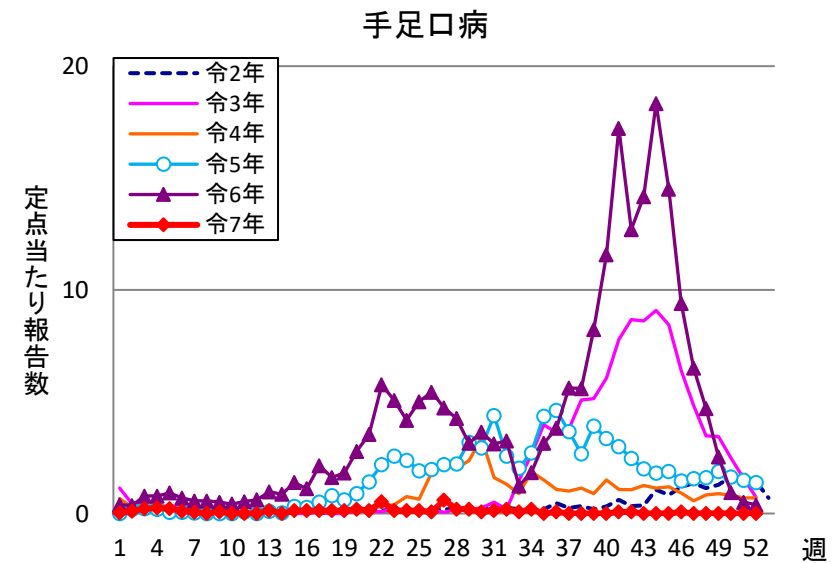
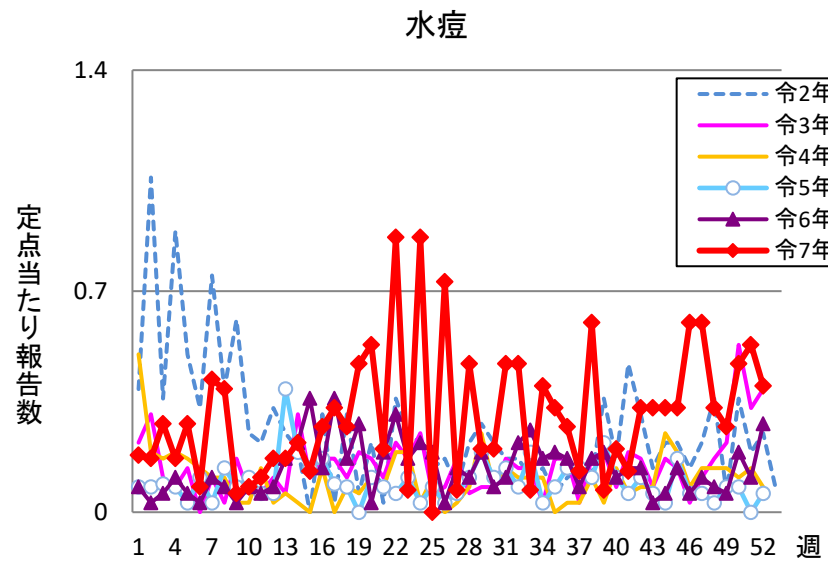
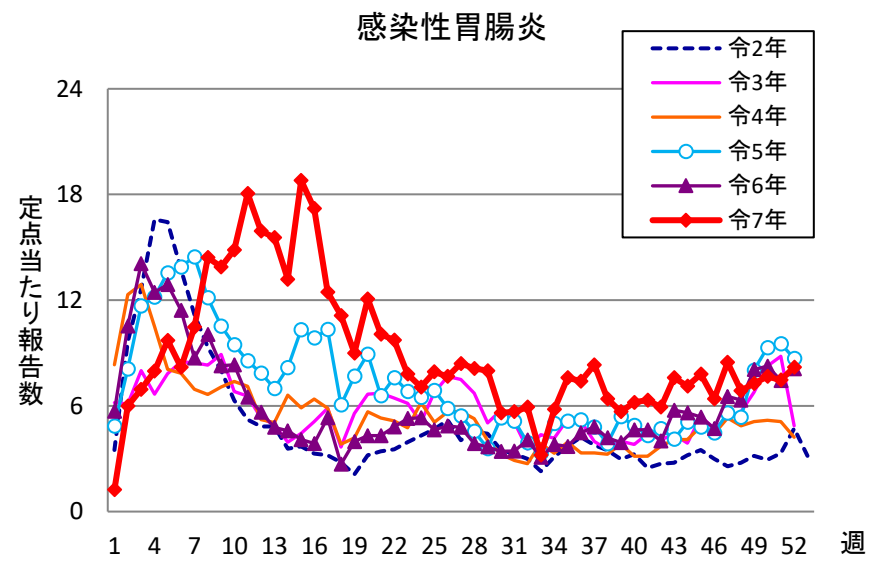
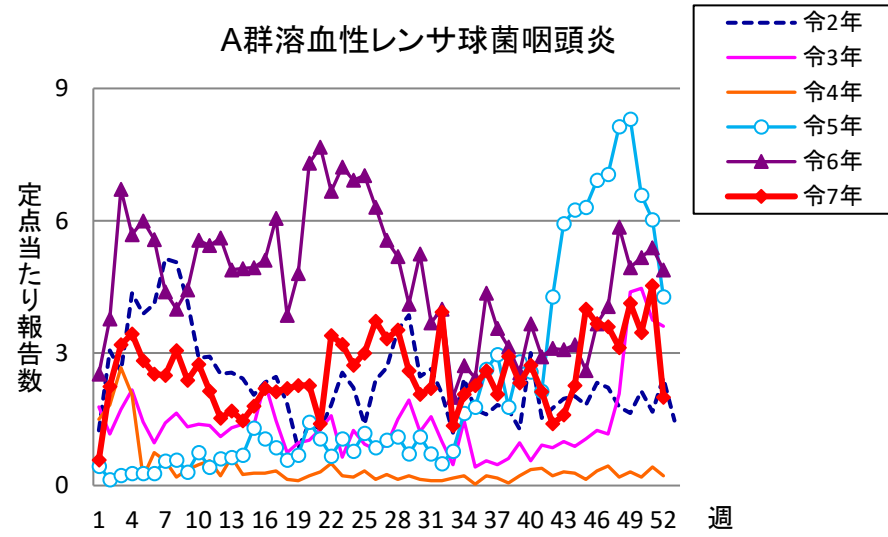


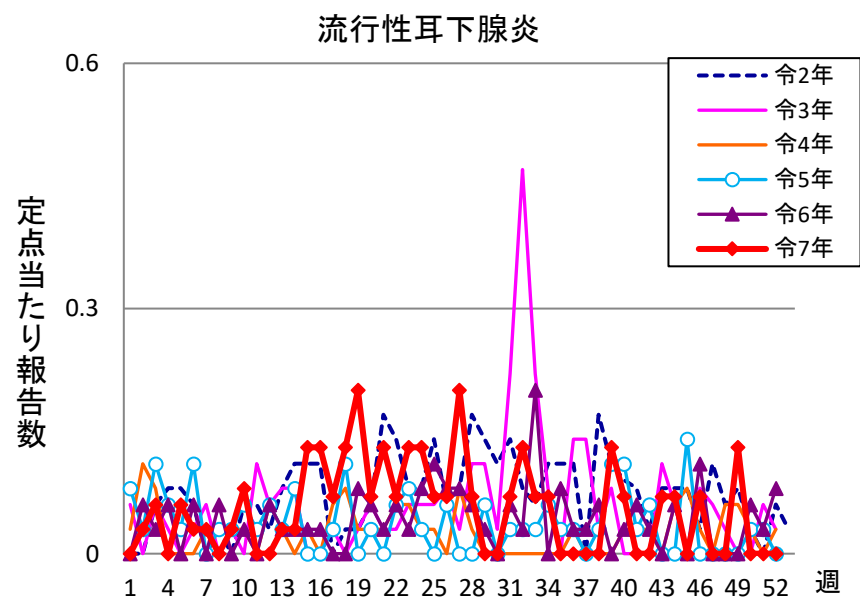
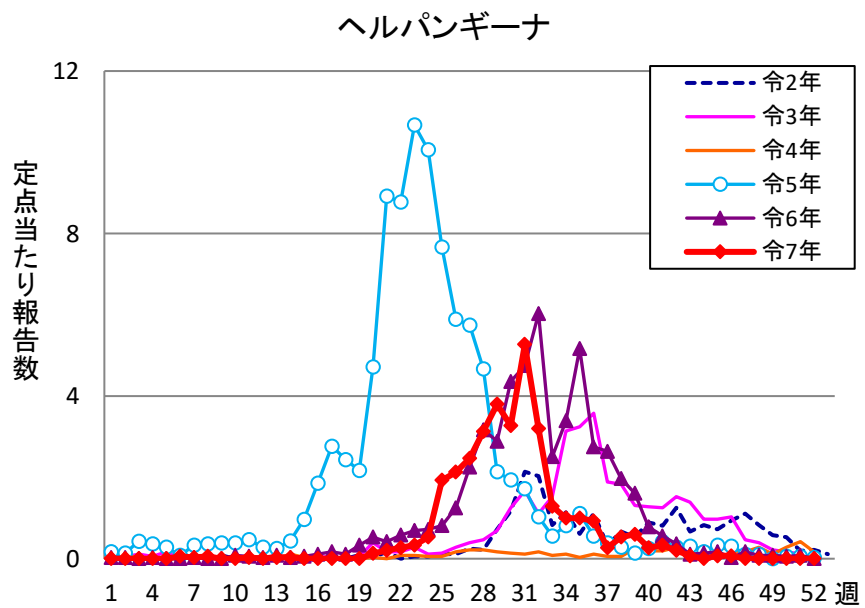
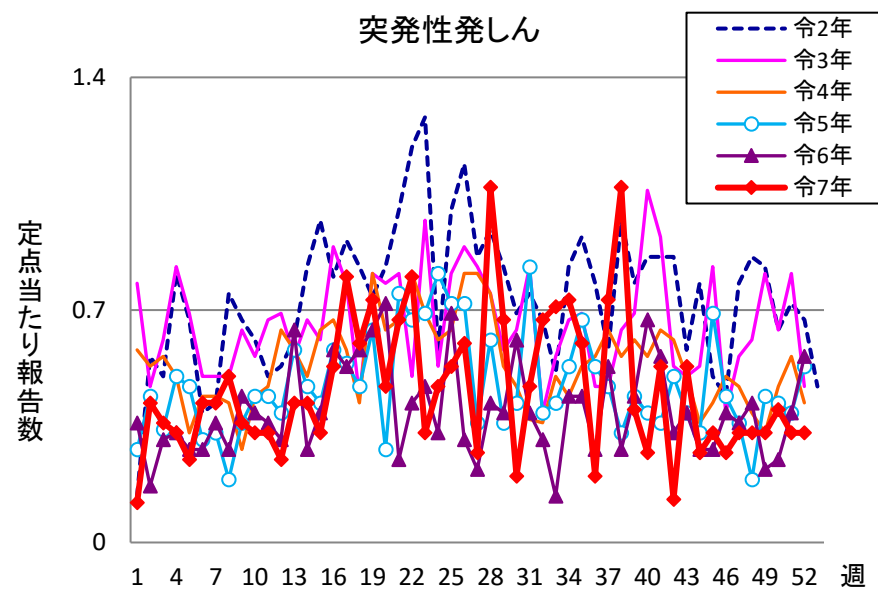
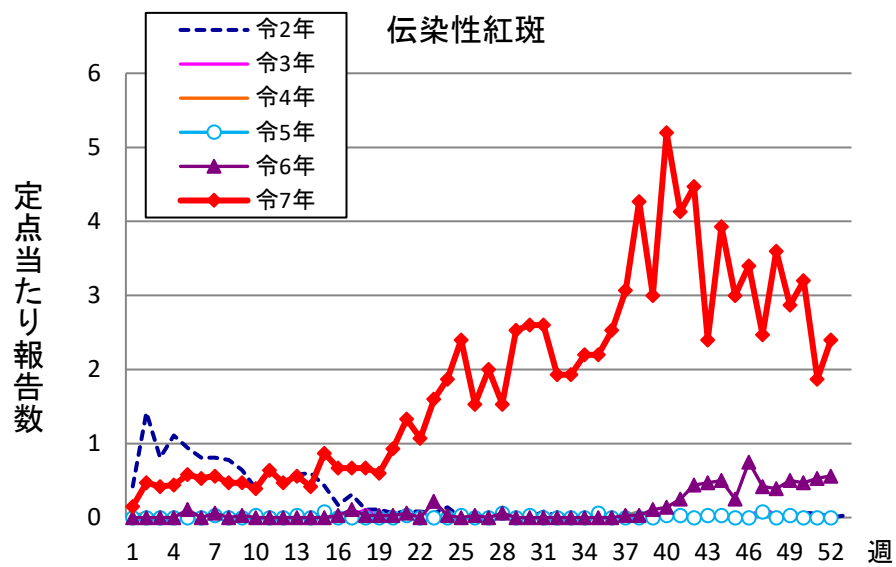
RSウイルス感染症



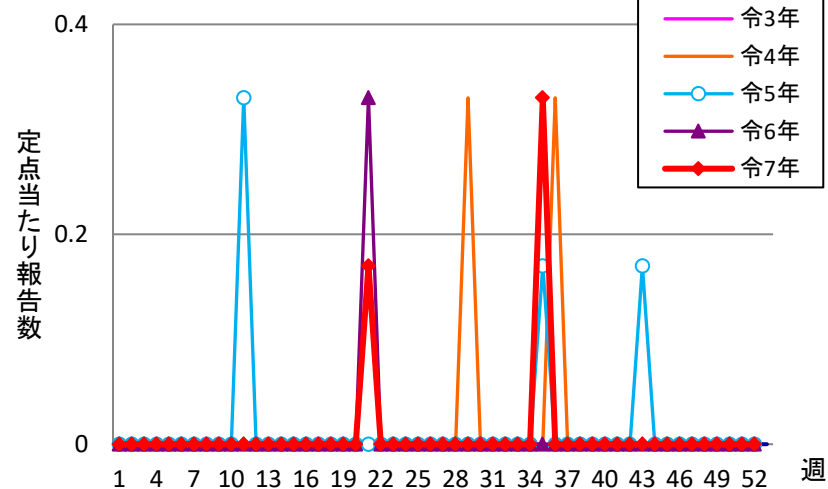
咽頭結膜熱



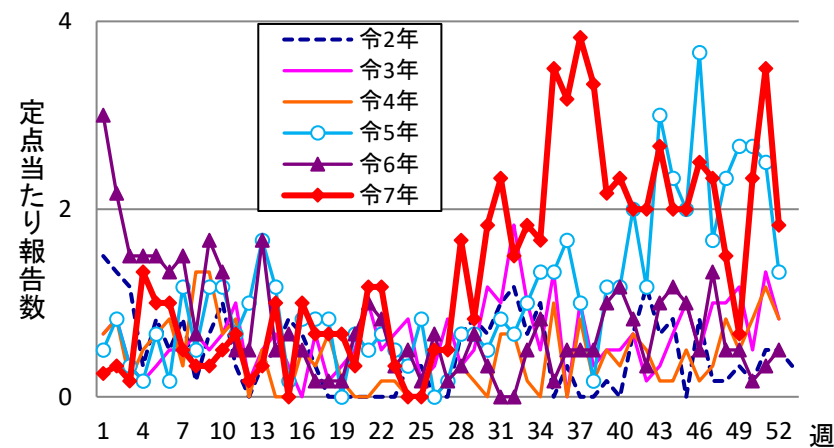




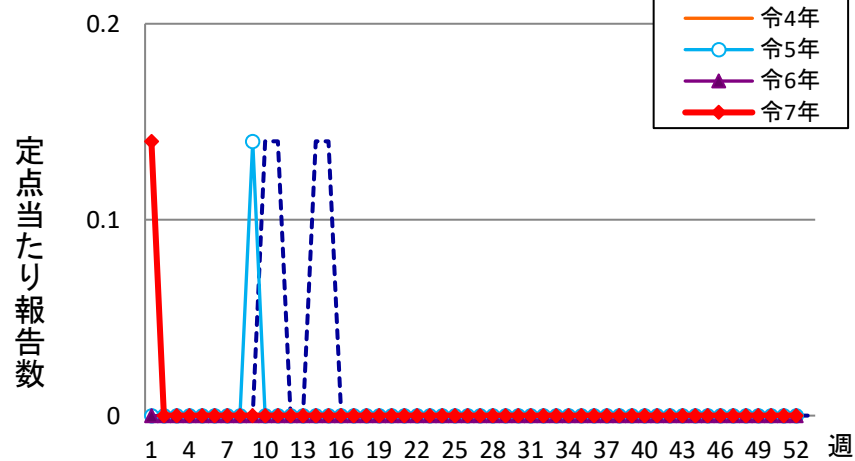
急性出血性結膜炎



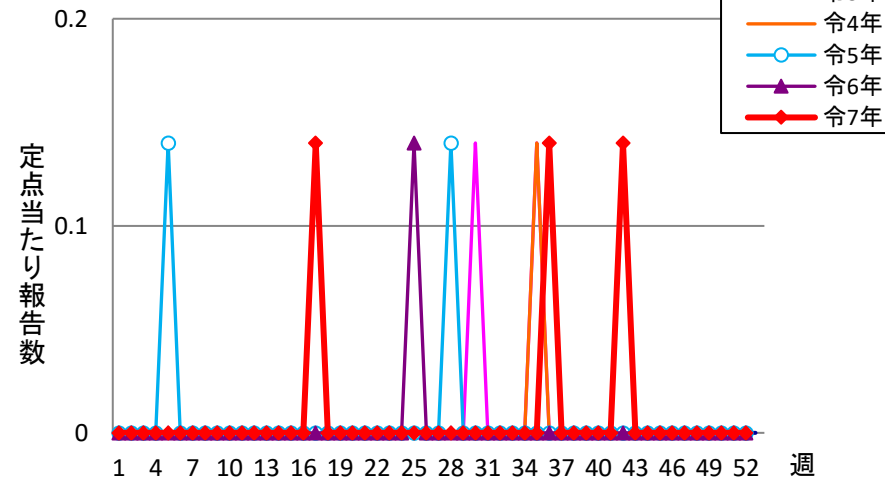
流行性角結膜炎



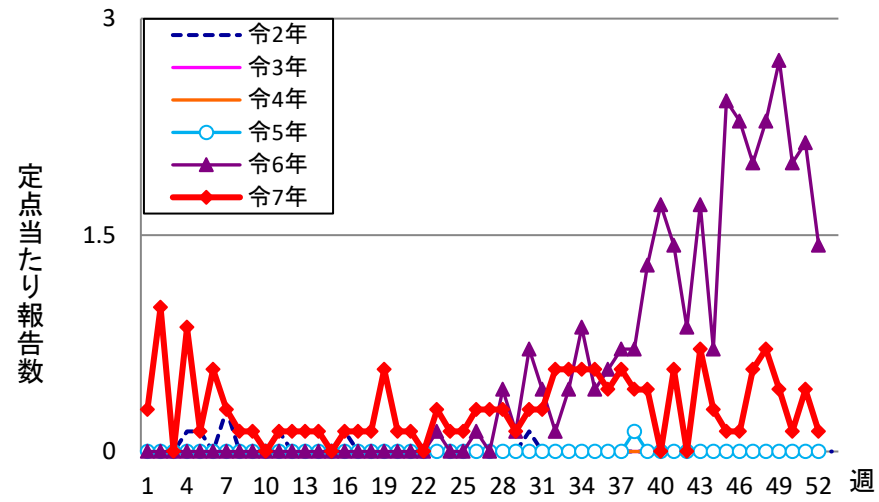
細菌性髄膜炎



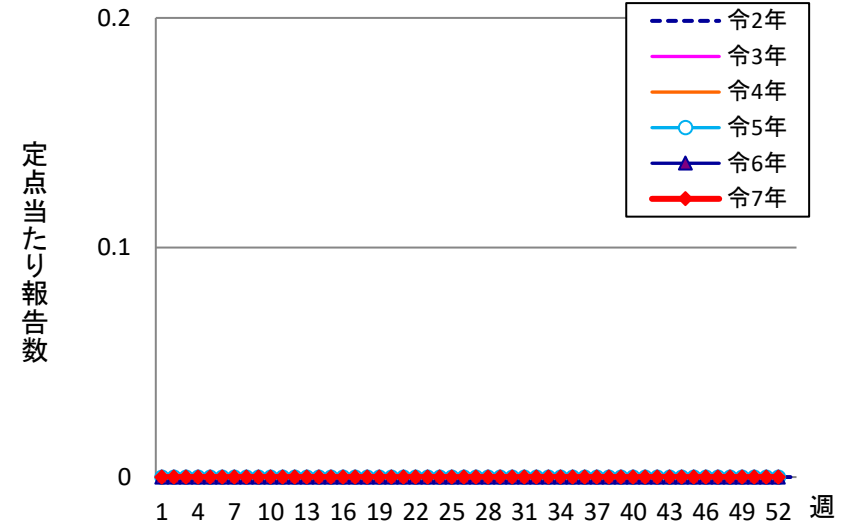
無菌性髄膜炎



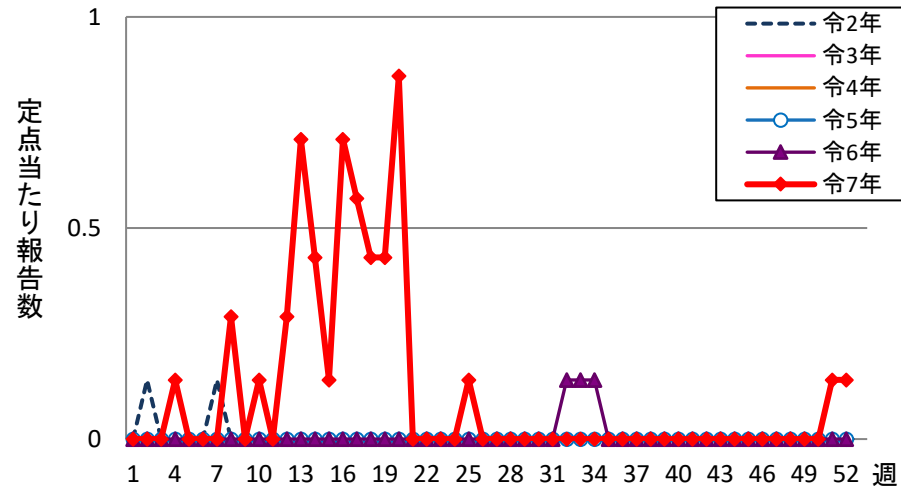
マイコプラズマ肺炎



クラミジア肺炎



感染性胃腸炎(ロタ)



急性呼吸器感染症

