

'" >6)...

+ß'5!0 P'Ç)...

">/'v ö •\$x\*f < %o'¼

">/( ö •\$x\*f < %o

( )

-		120
-		144 174
-		250 270
-		514
-		405
-		335
-		395
A neo		146
A		180
A neo		194
A ceo		194
DHC -Q		74
		76
		95

">0( î'5 b +0[

18			
19	10		
32		1,300	1,340
36			
37	1,500	1,360	
41	1,800		
54	1,900		
55			
2			
	2,500		
5	12		
8			
8	12		

0d•\<0ž +0[

	3° 52 38 13† 26 55
	1,766,119
	2,500 × 45 4,409 × :18m : 23m,26.5m,28.5m,30m,34m 2,620 × 300 163,779 6 1 3 10
	6.6kV 42KW 375kVA 1 625kVA 1 100kVA 2 30kVA 2
	138,000 1,075
	28,200 8,900 2,600
	(40× 7 20× 1 4 )

( ) ( )

">0'v +ß'5!O £750£#ì

">/( 3¿3ÿ ? X Ç e ^+ß'5!O Â ô P'Ç I b <

">/0 \_ b p7ÿ í4 )! / D b Z

1 \_ p7ÿ / D b Z

(1) î5 ! » d'¼ \_ P M •+ß'5!O \$î#Ö \_ b3¿3ÿ ^ ?4) b& - l g6ö € µ6ö l b4 )!

(2) )m ô ì b3û™ / D b Z

(3) µ · \$x ^ \_ p7ÿ / D b Z

( )

2 3û™ m • b Z

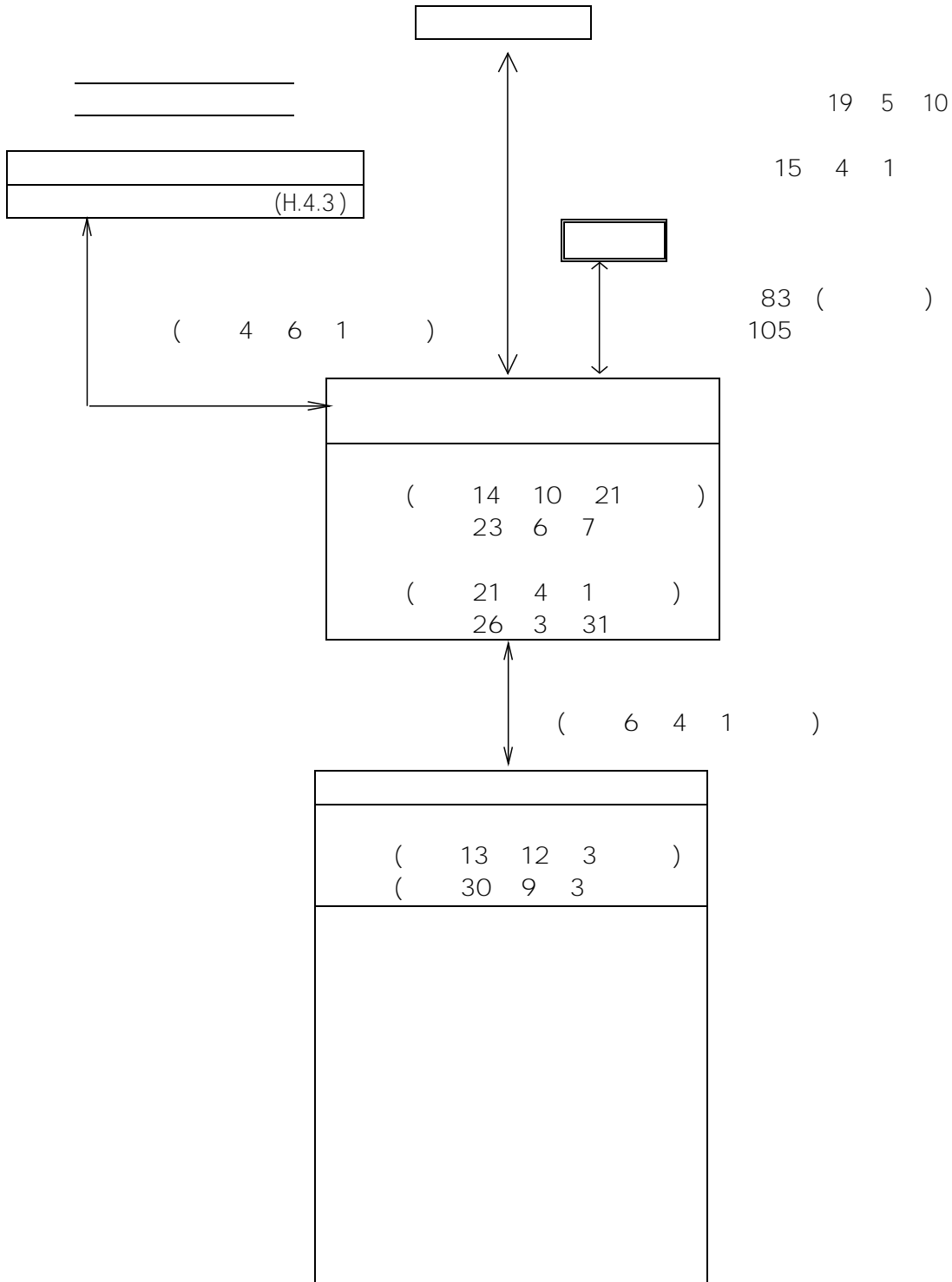
(1) \_ 3û™ m • b Z

">00 q · / D b Z

1 !O Â ô / D b Z

2 75!O6ö € µ6ö%& « b4 / D b l ì

(1) %& « Â | b)~) \_ | •4 b l i



ú²ú K°î9c ú  
ú¬ø K°î9-ø~

3 î5 ~!F F7' F ô \$ª)m ô0£#î b'Ç

14

4 ö&O2(q b Z

- (1)
- (2)
- (3)
- (4)
- (5)

">10 F ô í F " l g ~!F q · / D b Z

">20 \$ª F1ª / D b Z

">30 )m ô3z3æ / D b Z

">40 75!O0«)Ž b ‹

2

2

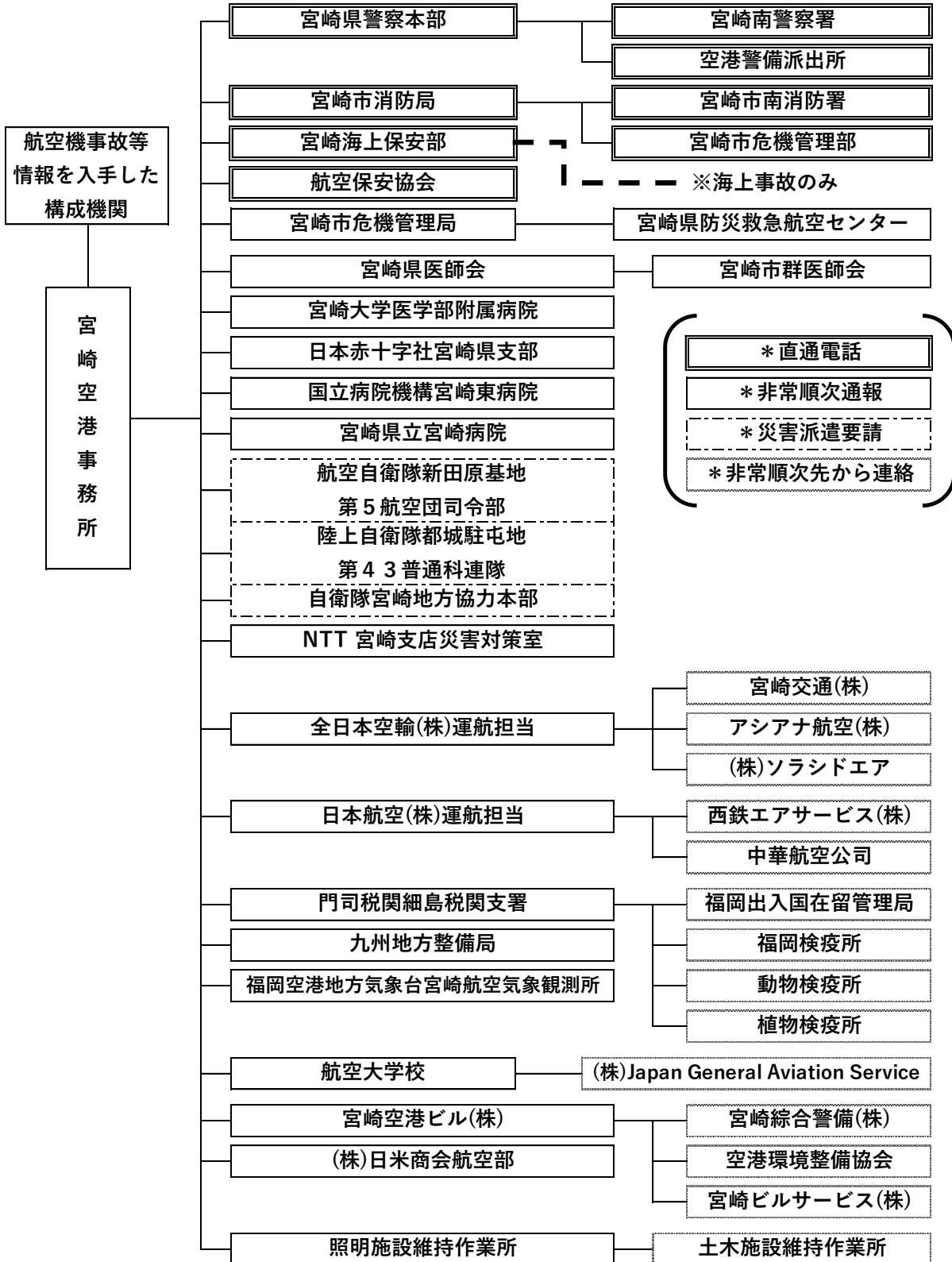
# 1'v +B'5!O Â ô P'Ç0£#i

">/ ( !O \$!#Ö%\$ < b \_ b p7ÿ í4 )! | g3û ™ b& -

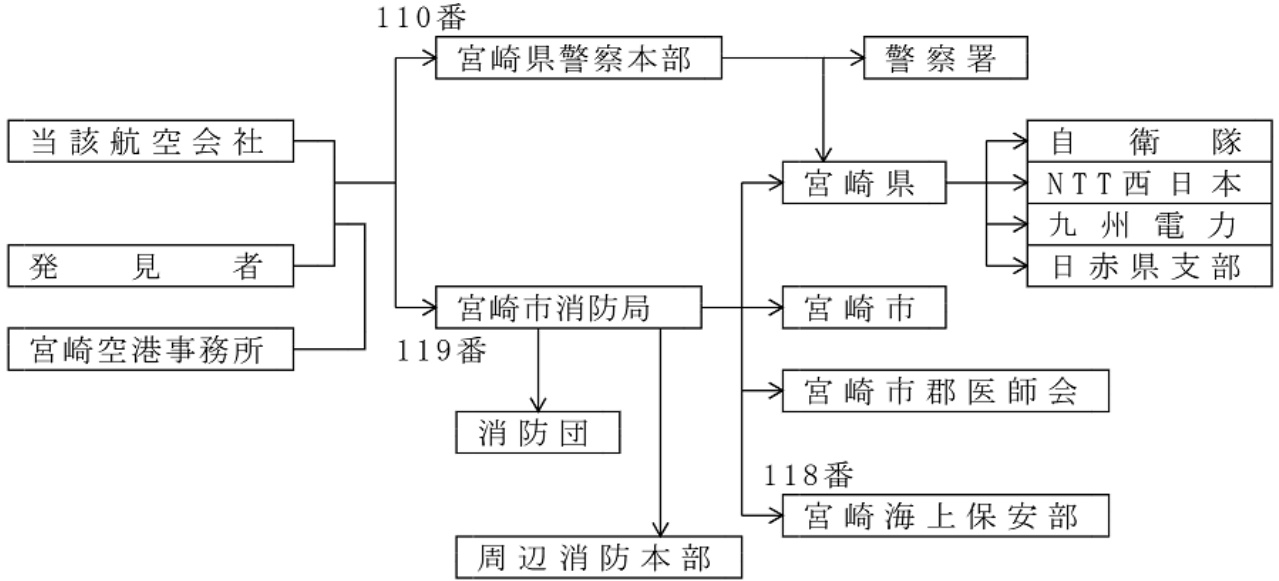
">/ 0 +B'5!O \_ b p7ÿ í4 )!

航空災害が発生し、又はまさに発生しようとしている場合の通信連絡系統は、次のとおりとする。

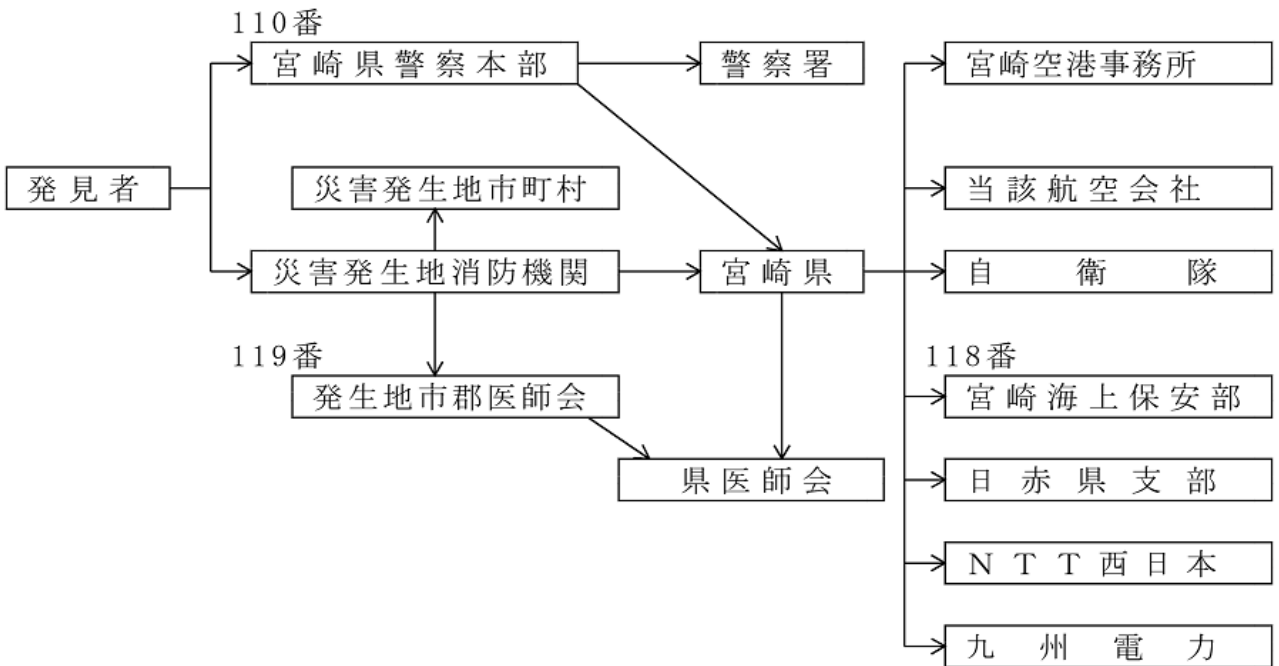
1 '5 | g7,,K æ b œ



2 '5 Ø3¶ b œ



3 Q b Ú b ... æ b œ



4 › µ6ō b P\*(



'''>0 0 3û™ m • b& –

1 !“)z (7c V&ã • • )'¼ b#’ ... l b)m ô4Ä

( )

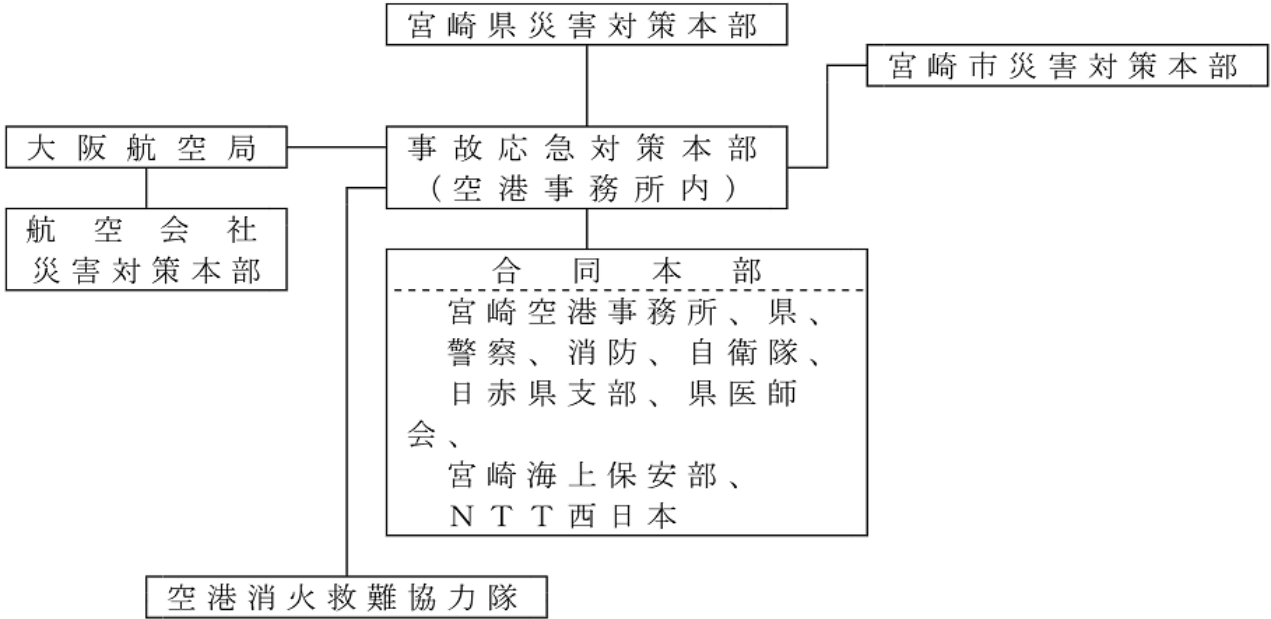
2 >L>R>R ¶/— G)z b)m ô Q0¿

3 q , b \_ 3û™ µ p¼ b’ \$x ^ q#Ý

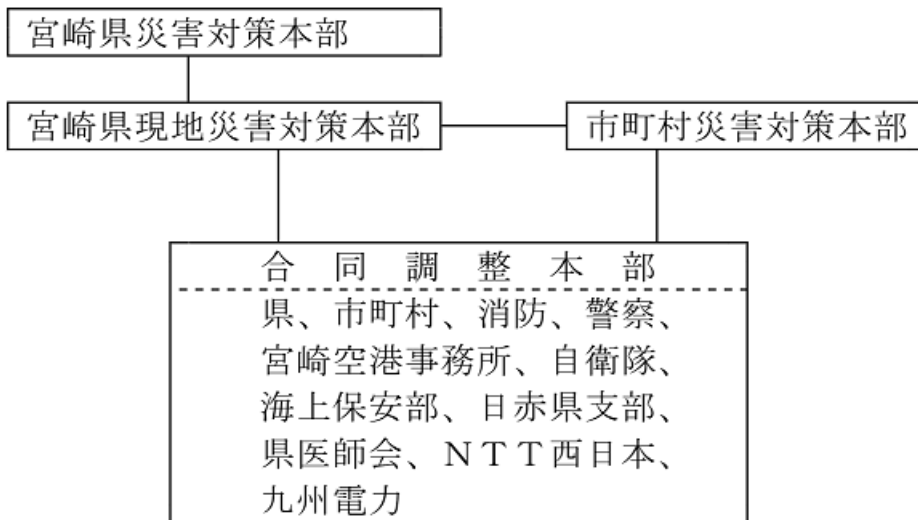
4 !O \_ p7ÿ#Ý Ê Ü ¥ É ± î b <#Ý

'''>0( q · / D b& 'g

1 î5 lg7,,K æb œ



2 '5 ø3¶lgQbÚb...æb œ



">1( È æ Â | q · >& '3û P'Ç)...>'

">2( (ô F " í F ô l g ~!F q ·

">/0 (ô q ·

">0 0 ~!F F7' q .

1 '5 lg7,,K æ\_> E •~!F F7' q .

(1)

( )

2 '5 Ø3¶\_> E •~!F F7' q .

(1)

( )

3 Q b Ú b ... æ\_> E •~!F F7' q .

(1)

(2)

(3)

( )

">10 F ô í F " q .

">3( \$ª F1ª q .

">/0 5 ± ! > '¼ : \$! \$x ! O ì b F ô \$ª P'Ç

">4( °3û0d D l g1™ D æ b0¿ '¼

1 °3û0d D

2 1™ D æ b0¿ '¼

">5( 6õ €\*... '¼ l b \$x & ^ \_ 4) q .

1 /Õ!O\*... l g Q b ~ l b P Â

(1) /Õ!O\*... l g Q b ~ \_ P M • | " q . l b Š í - |  
( )

(2) /Õ!O\*... l g Q b ~ l b | " / D

(3) /Õ!O\*... l g Q b ~ l b | " b z m ( , b Â & ì

ù²ù K°î9c ù  
ù - ø K°î9Öïc ~

(4) /Ö!O\*...lg Q b ~!b\_ bfj

2 È q.

(1) '5 lg7,,K æ[!O @\$î#ÖKS œ

(2) '5 ø3¶[!O @\$î#ÖKS œ

(3) Q b Ú b ... æ[!O @\$î#ÖKS œ